

Rockland County Solid Waste Management
Authority aka Rockland Green
172 Main Street,
Nanuet, New York 10954

Project Number: 209-4253493
May 21, 2026



Rockland County Solid Waste Management Plan

Revised 2023-2024 Biennial Update



Rockland County

Solid Waste Management Plan

Revised 2023-2024 Biennial Update

MAY 21, 2026

PROJECT NUMBER: 209-4253493

PRESENTED TO

**Rockland County Solid Waste
Management Authority aka
Rockland Green**
172 Main Street
Nanuet, New York 10954



SUBMITTED BY

Cornerstone Engineering and Geology, PLLC
100 Crystal Run Rd, Suite 100
Middletown, New York 10941

P +1.877.294.9070
F +1.877.845.1456

REPORT CERTIFICATION

The material and data in this report were prepared under the supervision and direction of the undersigned.

A handwritten signature in black ink, appearing to read "Kirstie Shurie".

5/21/2026

Kirstie Shurie
Senior Project Manager

Date

A handwritten signature in black ink, appearing to read "Prentiss A. Shaw".

5/21/2026

Prentiss A. Shaw, P.E.
Client Manager

Date

EXECUTIVE SUMMARY

The Rockland County Solid Waste Management Authority aka and herein referred to as Rockland Green, is the Solid Waste Planning Unit for all municipalities found in Rockland County. In February 2015, Rockland Green submitted its Final Solid Waste Management Plan (SWMP) to the NYSDEC for the planning period of 2014 through 2023, and the NYSDEC approved the Final SWMP on December 7, 2015. The first two-year planning period extension through 2025 was submitted on April 27, 2023, comments were provided by NYSDEC on June 20, 2023, the response to NYSDEC comments was submitted on October 20, 2023 and NYSDEC approved the planning period extension on November 20, 2023. As required by 6 NYCRR Section 366-5.1 the following is the Biennial Update for the period covering January 1, 2023 to December 31, 2024.

The goals of Rockland Green's SWMP are to enhance waste reduction, material reuse, and material recycling initiatives, coinciding with the goals of New York State's Plan, Beyond Waste (adopted December 27, 2010) and the updated New York State Solid Waste Management Plan: Building the Circular Economy Through Sustainable Materials Management (December 2023). Rockland Green is responsible for managing the Rockland Green owned solid waste and recycling facilities, as well as overseeing recycling and waste reduction programs and services countywide. Rockland Green is also responsible for education and public outreach efforts and takes pride in the input and support it receives from the towns, villages, and community organizations to create cost effective and environmentally sound waste management for Rockland County residents and businesses.

Rockland Green was active and effective in engaging their community through means such as in-person and virtual events, online engagement, which utilized their evolving social media presence, and through the dispersal of educational materials to residents, schools, post offices, libraries, and department of public works. To achieve the goals of their SWMP, Rockland Green utilized the following current programs and initiatives during this reporting period:

- Provide locations and events to dispose of Household Hazardous Waste (HHW), medical waste, and recycle E-waste. 528 HHW events were held in 2023 and 2024. Rockland Green began Operation Medicine Cabinet in partnership with the Rockland County Sheriff's Office to hold weekend events to accept controlled substances with the Rockland County Sheriff's Office on site. Rockland Green organized 20 weekend events both in 2023 and 2024 to accept controlled and uncontrolled substances.
- Provide six (6) Repair Café events in 2023 and 2024 to fix broken items including small electrical appliances, clothing, furniture, and digital devices.
- Provide twenty-one (21) free paper shredding events to residents at multiple locations throughout Rockland County.
- Increase public education and outreach through the use of door hangers, brochures, post cards, and educational literature, as well as tabling and presenting at community events.
- Track recycling tonnages of communities, as well as assist businesses, multifamily complexes, and schools with creating source separation plans and increasing recycling participation.
- Promote backyard composting by providing compost kits, selling compost bins, providing on-site assistance through partnerships, and educational videos posted at rocklandgreen.com.
- Provide recycling bins to be used for special events and municipal curbside.
- Provide biodegradable leaf bags to be used for yard waste composting.
- Provide educational presentations at schools and community events.

Milestones achieved during this reporting period include:

- The new MRF including state of the art equipment and automation began operations in July 2023.
- Six Repair Café events were held during the reporting period for residents to fix broken items to increase reuse, and one LampFest at Rockland County Community College for attendees to fix broken lamps.

- Rockland Green continued their social media campaign during this reporting period. Their online presence includes Facebook, Instagram, TikTok, YouTube, and a What Goes Where? Link found on the County website to keep residents informed of upcoming Rockland Recycles events and where to recycle various items.
- Rockland Green distributed over 11,500 reusable tote bags, 3,000 string bags, 17,000 magnets, 1,000 reusable water bottles, 150 T-shirts with educational literature at Town and Village Halls, Highway Departments, DPWs, libraries, pharmacies, post offices, presentations at schools, public presentations, tabling events, food pantries/rescues, and tours.
- String bags, water bottles, post it notepads, magnets with recycling information, pencils, coloring books, key chains, tee shirts and hats were also distributed during various events held at schools, businesses, clubs, and senior centers.
- The Recycling Coordinator met with over 1,600 business members during the reporting period to discuss the challenges and needs for each to increase their recycling participation.
- Rockland Green continued tracking food waste at their transfer facilities to further evaluate the waste stream and evaluate alternative options for food handling and recycling.
- Rockland Green conducted presentations and table exhibits at school and community events, such as health fairs, summer programs and STEM/STEAM, reaching close to 21,000 students, teachers and faculty in 2023 and 2024. Approximately 1,040 students were reached during presentations given to clubs and camps in 2023 and 2024. A total of 255 presentations were given in 2023 and 2024.
- Rockland Green also conducted presentations and tabletop exhibits for public events, businesses and civic groups, in addition to schools. These events reached a total of 4,681 residents and businesses in 2023 and 2024. 14 kiosks/tabletop presentations to the public were also completed during the reporting period.
- Rockland Green successfully implemented an organics residential drop off program for the Town of Orangetown, Clarkstown, and Haverstraw and is expanding the program to other municipalities they services.
- Rockland Green continues its “Feet on the Street” initiative, to increase the quality and quantity of recyclables set out at the curb by its residents.

These accomplishments and milestones are detailed further in Section 2 of this Biennial Update and are incorporated into the updated implementation schedules in Section 3. The solid waste and recyclables data is included in Section 5 in accordance with 6 NYCRR 366-5.1. Rockland Green will continue to work diligently with Rockland County’s stakeholders (residents, businesses, material management facilities, environmental organizations, etc.) to meet the goals of their SWMP. The approved Final SWMP for Rockland Green covers the planning period of 2014 through 2023. Rockland Green submitted its first planning period extension to the SWMP through 2025, which was approved by NYSDEC. As part of this Biennial Update, Rockland Green is electing to extend its planning period by an additional 2 years through 2027. The planning period extension is being made in accordance with 6 NYCRR Section 366-5.2 and the requirements are included in Section 6.

TABLE OF CONTENTS

1.0	PLANNING UNIT DESCRIPTION	1-1
1.1	Participating Municipalities Within The Planning Unit.....	1-1
1.2	Rockland County Demographics	1-1
2.0	SWMP STATUS AND ACCOMPLISHMENTS	2-1
2.1	Schedule No. 1 – General	2-1
2.1.1	Solid Waste Management Plan	2-1
2.1.2	Laws and Legislation	2-1
2.1.3	Finance	2-3
2.2	Schedule No. 2 – Recyclables and Waste Reduction	2-4
2.2.1	Materials Recovery Facility – Increase Participation and Recyclables Through Facility.....	2-4
2.2.2	Yard waste Composting – Increase Participation at Facilities and Promote Back-Yard Composting Efforts	2-8
2.2.3	Food Waste Recycling – Evaluate Incorporating into Program.....	2-8
2.2.4	Biosolids.....	2-9
2.2.5	Recyclables Pre-Processing Facility	2-9
2.2.6	Public Spaces Recycling	2-9
2.2.7	PAYT/SMART Programs	2-9
2.3	Schedule No. 3 – Reuse and Reduction	2-10
2.3.1	Household Hazardous Waste Facility.....	2-10
2.3.2	Postconsumer Paint Collection Program.....	2-10
2.3.3	Deconstruction.....	2-10
2.3.4	Materials Exchange/Reuse.....	2-11
2.3.5	Product Stewardship.....	2-11
2.4	Schedule No. 4 – Non-Recyclables	2-11
2.4.1	Data Collection and Alternative Disposal	2-11
2.4.2	Alternatives	2-12
2.5	Schedule No. 5 – Education and Outreach	2-13
2.5.1	Overall Program Initiatives.....	2-13
3.0	IMPLEMENTATION SCHEDULE.....	3-1
3.1	Introduction	3-1
3.2	Updated Implementation Schedules.....	3-1
4.0	RESOURCES.....	4-1
4.1	Administration	4-1
4.2	Financial Structures	4-2
4.2.1	Revenue Sources	4-2
4.2.2	Solid Waste Disposal Charges (User Fee & Ad Valorem)	4-2
4.2.3	Tip Fees	4-3
4.2.4	Recyclable & Re-Usable Materials	4-3
5.0	SOLID WASTE RECYCLABLES INVENTORIES	5-1
5.1	Solid Waste and Recyclables	5-1

5.2	Waste Generation and Recyclables Rates	5-1
5.3	Municipal Solid Waste Projections.....	5-2
6.0	PLANNING PERIOD EXTENSION.....	6-3
6.1	Alternatives Evaluation and Selected Alternatives and Programs	6-3
6.2	Implementation Schedule	6-9
6.3	Municipal Solid Waste Projections.....	6-9
7.0	LIMITATIONS	7-1

APPENDIX SECTIONS

TABLES

Table 4-1	Current Tipping Fees
Table 5-3	2023 and 2024 Solid Waste Quantities Based on the Annual Planning Unit Recycling Reports
Table 4-4	Municipal Solid Waste (MSW) Combined Composition Analysis and Projections

FIGURES

Figure 1	Towns & Villages in Rockland County
----------	-------------------------------------

APPENDICES

Appendix A	Annual 2023 & 2024 Planning Unit Recycling Reports
Table A-1	2023 and 2024 Solid Waste and Recyclables Destination Facilities
Appendix B	Rockland Green Hillburn Complex Permit

1.0 PLANNING UNIT DESCRIPTION

1.1 PARTICIPATING MUNICIPALITIES WITHIN THE PLANNING UNIT

The Rockland County Solid Waste Management Authority aka Rockland Green was formed in 1994 for the express purpose of managing waste materials generated, managed, and/or disposed within the boundaries of Rockland County. The Planning Unit consists of the entire County of Rockland which is comprised of five (5) Towns and eighteen (18) Villages presented below, with the locations depicted in Figure 1-1. Rockland Green previously provided services to the village of South Nyack. South Nyack was incorporated into the Town of Orangetown jurisdiction, which is serviced by Rockland Green.

All municipalities included in the Final SWMP are still actively participating in the Planning Unit and SWMP.

- Town of Clarkstown, containing villages:
 - Spring Valley (also located in the Town of Ramapo)
 - Upper Nyack
- Town of Haverstraw, containing villages:
 - Haverstraw
 - Pomona (also located in the Town of Ramapo)
 - West Haverstraw
- Town of Orangetown, containing villages:
 - Grandview
 - Piermont
 - Nyack (also located in the Town of Clarkstown)
 - South Nyack
- Town of Ramapo, containing villages:
 - Airmont
 - Chestnut Ridge
 - Hillburn
 - Kaser
 - Montebello
 - New Hempstead
 - New Square
 - Sloatsburg
 - Suffern
 - Wesley Hills
 - Spring Valley
- Town of Stony Point
- Town of Mahwah
- Borough of Allendale

1.2 ROCKLAND COUNTY DEMOGRAPHICS

Rockland County is located in the lower Hudson Valley of New York State and is the southernmost county west of the Hudson River. Rockland County is the smallest county in New York State located outside of New York City, with a total area of 199 square miles (sq. mi.), of which 174 sq. mi. (87.4%) is land and 25 sq. mi. (12.6 %) is water.

In 2000, the population of Rockland County was approximately 286,753 with a calculated population density of 1,645.9 people per square mile. In 2010, the population of Rockland County was approximately 311,687 and the

population density was 1,789.0 people per square mile representing 104,057 housing units. Of the housing units in Rockland County, 99,242 were occupied representing 95.4% of all available housing units.

A new census was performed in 2020. In 2020, the total population of Rockland County was 338,329 and the population density was 1,950.7 people per square mile representing 108,068 housing units. Of the housing units in Rockland County, 102,948 were occupied representing 95% occupancy of all available housing units. According to the U.S. Census Bureau Annual Estimates of the Resident Population, the population of Rockland County grew to 348,144 in July 2024, which is 1.7% higher than the projected growth to 342,421 projected for 2022 in the 2021-2022 SWMP Biennial Update and Planning Period Extension.

Based strictly on the number of dwelling units reported by the U.S. Census Bureau 2005-2009 American Community Survey, one-family dwellings account for 70.5% of the total dwellings in Rockland County. As such, almost one third (29.5%) of the dwellings are in structures with two or more apartments and 23.1% of the dwellings are in structures with three or more apartments. From the 2019 American Community Survey, the number of dwellings in structures with two or more apartments increased to 34.3% and increased to 26.9% for dwellings in structures with three or more apartments. Based upon this information, multi-family housing units will continue to be an important focus for the planning unit.

Significant to land use and the management of waste materials within Rockland County is the fact that approximately one-third of Rockland County's area is parkland belonging to Rockland County, the Towns within Rockland, or New York State through the Palisades Interstate Park Commission. The large land area dedicated to parkland is subject to Rockland County's programs for open space waste and recyclables collection and management. Materials collected represent discards from casual use and are nominal with respect to homeowner generated materials.

Rockland County's parklands can be considered rural. The majority of the remainder of Rockland County is suburban residential interspersed with open green space and commercial and light industrial development. Urban development is limited to the central portions of a few of the villages within Rockland County such as Suffern, New City, and Nyack. From a land use perspective, Rockland County can generally be divided into the following categories, based on 2010 data:

- Residential – 32.1%
- Commercial – 2.2%
- Mixed Use – 0.1%
- Industrial – 2.4%
- Institutional/Quasi-Public – 5.5%
- Utilities/Transportation – 11.2%
- Agricultural/Parks/Open Space – 39.0%
- Vacant Land, Other or No Information – 7.4%

Land use is quite significant to the planning of solid waste management within the planning unit. As can be seen from the land use categories above, although residential land use is less than a third of Rockland County land area, because of the significant quantity of open land, the residential portion represents 60% of the inhabited land use within Rockland County.

Rockland Green differentiates between residential and commercial/institutional waste streams to the extent possible based on how the haulers collect the different types of waste. Rockland Green tracks residential, commercial and institutional streams separately to the extent that haulers collect these streams separately. The following waste streams are collected and recorded separately at the below Rockland Green facilities:

- At the Hillburn, Clarkstown, and Haverstraw facilities, solid waste received is differentiated into municipal/residential MSW, commercial MSW, municipal/residential C&D debris, and commercial C&D debris at the inbound truck scale.
- Yard/organic waste received at the Clarkstown Transfer, Composting, and C&D Debris Processing Facility and French Farms Yard Waste Composting Facility is separated by municipal and private haulers.

The data available to Rockland Green on segregated commercial and institutional waste streams are tracked and reviewed to the extent possible for Rockland Green's consideration for the long-term stewardship and management of waste and recyclable materials within the County.

2.0 SWMP STATUS AND ACCOMPLISHMENTS

This Section summarizes Rockland Green activities during 2023 and 2024 to further reduce waste and increase reuse, recycling, and composting within the Planning Unit. The following updates have been organized to coincide with the categories used in the Implementation Schedules found in Section 3 of this Biennial Update.

2.1 SCHEDULE NO. 1 – GENERAL

2.1.1 Solid Waste Management Plan

- **Finalize SWMP:** A public notice and comment period for the Final SWMP Draft was held from November 27, 2014 to January 12, 2015, with a public meeting held on December 18, 2014. The Final SWMP was adopted on January 22, 2015 and submitted to the DEC on February 13, 2015. The NYSDEC approved the Final SWMP on December 7, 2015.
- **Reporting:** The Final SWMP included Rockland Green's 2011-2012 Biennial Compliance Report. The 2013-2014 Biennial Compliance Report was submitted on April 28, 2015. The 2015-2016 Biennial Compliance Report was submitted on April 27, 2017. The 2017-2018 Biennial Compliance Report was submitted on April 26, 2019 and response to DEC comments on the 2017-2018 Biennial Compliance Report were submitted on October 22, 2019 and April 06, 2020. The 2019-2020 Biennial Update was submitted on April 27, 2021 and the revised 2019-2020 Biennial Update in response to DEC comments was submitted on August 6, 2021. The 2021-2022 Biennial Update was submitted on April 27, 2023, comments were provided by NYSDEC on June 20, 2023, and the revised 2021-2022 Biennial Update in response to DEC comments was submitted on October 20, 2023.
- **Planning Period Extension:** A planning period extension to extend the current SWMP period by two (2) years from 2023 to 2025 was incorporated into the 2021-2022 Biennial Update. A second planning period extension to extend the current SWMP period through 2027 is included in this 2023-2024 Biennial Update. The planning period is being extended in accordance with 6 NYCRR 366-5.2. A maximum of five (5) planning period extensions to the SWMP may be requested and approved.

2.1.2 Laws and Legislation

- **Flow Control Enforcement:** Continue to meet with Rockland County Department of Health (RCDOH).
 - Local Law No. 2 of 2008, Chapter 350 regulates that Rockland County wide collection and disposal of solid waste (garbage, recyclables, construction and demolition debris, concrete, and yard waste) generated within Rockland County be brought to a designated Rockland Green facility. Rockland Green partners and provides funding to the RCDOH for enforcement of Local Law No. 2 (Flow Control) and Article XVII (separation of recycling of designated materials). RCDOH has taken a more active role with enforcement of Article XVII. Rockland Green and the RCDOH meet monthly to review program performances and to allocate resources related to Flow Control enforcement. During this Biennial Update period, a total of 2,612 collections and observations were made by RCDOH. Of the total, 42 observations were inconclusive due to not being able to identify a unique number for some of the roll-off containers entering across the scales, a unique number did not exist on these roll-off containers identified or weigh masters did not record the unique number. The RCDOH identified 19 violations of flow control where haulers failed to deliver waste to a designated facility. RCDOH identified 82 mixed loads delivered to the transfer stations, mixed loads consist of waste mixed with recyclables listed under Article XVII. Based on observations conducted at the transfer station, the RCDOH conducted further

inspection to over 720 generators, which included schools, businesses, and multi-family complexes.

- **Pharmaceutical Take-Back:** Rockland County legislation for Pharmaceutical Take-Back in place, superseded by New York state legislation on March 10, 2021.
 - Rockland Green's Household Hazardous Waste (HHW) facility is permitted to accept over the counter pharmaceutical materials during stated operating hours. Controlled substances may only be accepted when an officer from the Rockland County Sheriff's Office (RCSO) is present. Operation Medicine Cabinet is a cooperative effort with the RCSO to keep Rockland County residents' medicine cabinets, and the environment, safe by offering HHW weekend collection events for controlled substances.
- **Plastic Bag Ban:** New York State plastic bag ban is now in effect as of March 1, 2020.
 - Rockland Green canvasses local retailers that are required to comply to the plastic bag ban under Title 27, section 27-2705 and advises the Department of non-compliance through the use of the Department's electronic "Report a Plastic Bag Law Violation" plastic bag ban and film plastic recycling complaint form.
- **Food Donation and Food Scraps Recycling:** New York State legislation in effect as of January 1, 2022.
 - Rockland Green has promoted food donation through their partners at Together Our Unity Can Heal, Inc. (TOUCH). Rockland Green received a grant from the NYSDEC to aid in the reduction of food waste by providing vehicles, refrigerators and freezers. During this Biennial Update period, TOUCH has donated 1,340 tons of food throughout 2023 and 2024, that otherwise would have been landfilled.
 - Rockland Green's Co-Composting facility is permitted to accept up to 20 tons per day of food waste. The List of Designated Food Scrap Generators published by the Department on August 23, 2023 identified a total of 24 generators within Rockland County that generate 2 tons or more of food scraps per week that would be required to comply with the Food Donation and Food Scraps Recycling Law by donating or both donating and recycling food waste. The law came into effect January 1, 2022. Twelve (12) of these generators would be required to recycle and utilize the permitted capacity at Rockland Green's Co-Composting facility.
 - Rockland Green completed a pilot program in 2022 for a residential drop-off for organics for processing at the Co-Composting facility. One residential drop-off location was set up for the Town of Orangetown. The pilot program was successful and expanded to the Towns of Clarkstown, and Haverstraw in 2024. Rockland Green plans to set up additional drop-off locations to expand the program to other Towns it services as well.
 - Rockland Green conducted a feasibility study prior to this biennial compliance period, exploring Anaerobic Digestion and Generation (ADG) technology and traditional windrow composting for food waste recycling to evolve with changes to environmental regulations and laws. The addition of the Anaerobic Digestors to the Rockland County Wastewater Treatment Plant has been determined to be financially infeasible at this time. Rockland Green will continue to monitor the financial feasibility of ADG to determine if it can be implemented in the future.
 - Rockland Green has continued to promote backyard composting through educational events and the provision of composting materials to residents.
- **Postconsumer Paint Collection Program:** New York State legislation in effect as of May 1, 2022.
 - Rockland Green's Household Hazardous Waste (HHW) facility is permitted to accept postconsumer paint during stated operating hours. As of May 1, 2022, Rockland Green entered into an Indirect Contract through PaintCare with its operator Clean Harbors.

- **Climate Leadership & Community Protection Act (CLCPA):** New York State legislation in effect as of January 1, 2020.
 - Rockland Green has submitted an application to increase the capacity for the Clarkstown Facility.

2.1.3 Finance

- **Contracts:** The following contracts were established in 2023 and 2024.
 - MRF and Hillburn TS: The MRF ceased operations on September 19, 2019 and an MOU with Interstate Waste Services (IWS) was established for the interim transloading of recyclable materials for processing while Rockland Green makes its facility improvements, including the demolition of the existing facility equipment, the design and construction of new state of the art dual stream recyclables processing system equipment, and the construction of additional improvements required at the facility and site. Rockland Green demolished the MRF equipment in 2020 after ceasing operations and commenced the procurement for the design and construction of the new dual stream recyclables processing system (the “DSR Processing System”) for the MRF. Rockland Green issued an RFP in 2021 for the design build of new state of the art, more automated equipment for the MRF. Rockland Green utilized RRT Consulting Engineer in connection with the DSR Processing System for the MRF. Construction of the MRF was completed and began operations starting in July 2023. The MOU with IWS expired at the end of April 2023 and was not renewed. A contract for the operation, maintenance and marketing of recyclables generated by the MRF was executed for a 7-year contract with an option for one 3-year renewals with SMR Engineering in February 2023. SMR Engineering is now called Balcones Recycling (Balcones). Balcones is the current operator of the MRF.
 - Clarkstown TS: Rockland Green personnel took over operations and maintenance of the facility in October 2016. The hauling services contract remains with Mr. Bults, Inc, a new contract was executed on March 1, 2024 and is effective through March 1, 2029, with an option for five 1-year renewals.
 - New contracts for garbage collection, transportation and disposal were awarded for the villages of Haverstraw, New Hempstead, Sloatsburg, and Spring Valley in 2016. The contracts were renewed for 2021 and 2022. The contracts were effective until 2024 and were renewed through 2025, with one additional 1-year renewal available.
 - Rockland Green has a 3-year collection agreement with IWS for Pomona which commenced on January 2, 2024 and is effective through December 31, 2026, with an option for two 1-year renewals.
 - Rockland Green has a 2-year collection agreement with Carlo Minuto Carting for Airmont which was effective through December 31, 2023, but has been renewed through optional 1-year contract extensions through 2026.
 - New contracts for the Rivertown Consolidation for the consolidated recycling collection services for Nyack, Piermont, Grandview-on-Hudson and South Nyack were issued in 2019 and expired in 2024. A new RFP was awarded in 2024 for the 2025-2029 calendar years.
 - The Village of South Nyack was dissolved in March 2022 and integrated into the Town of Orangetown.
 - The 5-year contract for the operation and maintenance of the Biosolids Co-Composting Facility with Denali Water Solutions was renewed in 2022. An option to renew the contract for an additional 5-years is available in 2027.
 - Casella New England Waste Services and Rockland Green entered into a 5-year contract for disposal of solid waste on September 1, 2024. The contract allows for five 1-year renewals, after the initial contract term.

- Bowline TS: Rockland Green issued the operations and maintenance contract for the Bowline Transfer station with Mr. Bults, Inc. on January 30, 2020. The 5-year contract is effective until 2025. The contract allows for five 1-year renewals, after the initial contract term.
- Rockland Green entered into Intermunicipal Recyclables Management Agreements with the Towns and Villages in Rockland County in 1996, which expired in 2018. Due to Rockland County's adoption of the Flow Control Law in 2008, all recyclable materials must be delivered to the MRF pursuant to such local law. Thus, renewal of the Intermunicipal Recyclables Management Agreements was not necessary. The rebates received by each of the municipalities are effectuated annually through Rockland Green's Board resolution.
- The Household Hazardous Waste Facility is operated by Clean Harbors Environmental Services, Inc. under a contract with the Rockland County Solid Waste Management Authority with an initial term that expired on April 30, 2021, and which has been renewed through until April 30, 2026.
- County facilities (CF5) began the first of five (5) 1-year renewals through December 31, 2029.
- **Continue to apply for standard government grants:** The following grants were applied for or awarded to Rockland Green in 2023 and 2024. Due to the COVID-19 pandemic, some grant application review and awards were delayed while applications were allowed to continue. This list includes grant awards that were delayed in their award, dating back to 2020.
 - Awarded \$115,092.71 FEMA COVID Grant, payment received in 2023.
 - Awarded \$185,373.25 Recycling Coordinator Grant, payment received in 2023 from New York State.
 - Awarded \$268,909.00 from New York State HHW, payment received in 2023.
 - Awarded \$200,505.15 Recycling Coordinator Grant from New York State, payment received in 2024.
 - Approved for \$329,826.91 Recycling Coordinator Grant from New York State in 2023.
 - Approved for \$279,312.58 New York State HHW in 2023.
 - Anticipating Recycling Coordinator Grant from New York State for 2024.
 - Anticipating New York State HHW for 2024.

2.2 SCHEDULE NO. 2 – RECYCLABLES AND WASTE REDUCTION

2.2.1 Materials Recovery Facility – Increase Participation and Recyclables Through Facility

- **Accepted Recyclable Materials at MRF:**
 - During 2019, equipment and recommended changes were evaluated through quarterly throughput audits. As a result of these audits, it was determined that the existing MRF equipment was beyond its useful life and that updates and changes to the MRF should be initiated. On September 19, 2019 the MRF ceased operations and an MOU with IWS was issued for transloading recyclable materials for processing.
 - On January 3, 2020 an RFP was issued for the demolition of the equipment inside the MRF to upgrade the facility. Demolition of the MRF equipment was completed in 2020.
 - An RFP was issued on October 21, 2020 for the design build of improved, more automated MRF equipment. Rockland Green awarded the contract to RRT Consulting Engineer for the design build of a DSR Processing System for the MRF. Construction for the MRF was completed in 2023 and operations began July 2023.

- The DSR Processing System utilizes advanced equipment to sort material through a variety of technical and manual methods that use characteristics such as shape, density, color, and composition to quickly and accurately separate various materials from one another. In addition to the equipment, the MRF building was expanded (approximately 15,000 square feet), with new building features such as concrete pushwalls and pits, an electrical service upgrade, and a complete renovation of the existing administration area for improved operations. New trailer loading docks and additional storage space were added to the facility.
- The DSR Processing System provides flexibility at the MRF to adjust to changes in both the inbound material stream and the commodities market and is expected to have an operational life of not less than twenty (20) years.
- An application was submitted to NYSDEC on November 26, 2024 to increase the permitted capacity of the MRF from 240 tons/day to 704 tons/day to increase processing through the MRF.
- The percent residuals is approximately 8% or less as a result of the new MRF and technology. The DSR Processing System has an improved percent residuals compared to the MRF equipment prior to decommissioning in 2019, which had a percent residuals as high as 17% at times due to the condition of the equipment.
- Crushed glass from the new MRF is processed into fines, medium and large sizes. The fines are approved by the NYSDOT to be used as backfill or for aggregate within concrete. A total of 2,077.21 tons of fine crushed glass were utilized by Rockland Green. 4,613.2 tons of medium and large glass were sent to Balcones Recycling or Urban Mining.
- The Herb Reisman Environmental Education Center was located in the Hillburn Facility, tours of the education center were discontinued when the MRF ceased operations. Rockland Green is working towards a new education outreach center. The new education outreach center will be located on the lower level of the Rockland Green office at 172 Main Street, Nanuet, New York 10954. Rockland Green has contracted with Wynn World Creative for the design of the education outreach center which will include exhibits related to solid waste management practices and an immersive theater experience. The education center is anticipated to open on June 15, 2026.
 - As a result of the closure of the education center, Rockland Green has continued its outreach at local schools, as described in Section 2.5 of this report.
- **Residential and Multifamily Participation:**
 - Rockland Green was able to remain active and effective in engaging residential and multifamily community members in 2023 and 2024 by continuing to hold in-person events at schools, libraries, clubs/camps, and public kiosks when possible and distributing educational information, reusable totes and recycling bins. Rockland Green also engaged residential and multifamily community members through means such as virtual events and online engagement, which utilized their evolving social media presence.
 - Rockland Green continued to produce and distribute informational door hangers on recycling. In 2023 and 2024 staff distributed 4,600 door hangers to single family homes in nine municipalities.
 - Rockland Green distributed over 11,500 reusable tote bags to residents at outreach presentations and tabling events to encourage waste prevention and reuse in 2023 and 2024.
 - Rockland Green conducted presentations and tabletop exhibits at school and community events, such as health fairs, summer programs and STEM/STEAM, reaching close to 21,000 students, teachers and faculty in 2023 and 2024. Approximately 1,040 students were reached during presentations given to clubs and camps in 2023 and 2023. A total of 255 presentations were given in 2023 and 2024.

- Presentations and tabletop exhibits are also offered for public events (i.e. libraries, farmer's markets, senior centers, and Earth Day events), businesses and civic groups, in addition to schools. These events reached a total of 4,681 residents and businesses in 2023 and 2024. 14 kiosks/tabletop presentations to the public were also completed during the reporting period.
- Rockland Green expanded their paper shredding events in 2023 and 2024, sponsoring 21 secure paper shredding events for local residents to shred sensitive documents at no cost.
- Rockland Green continued to deliver post cards to the towns, villages, post offices, and libraries to announce the expansion of the recycling program to include paper food and beverage cartons.
- Rockland Green continued the bilingual sticker program to educate residents about contamination at the curb. The sticker series includes educational messaging regarding Recycling Contamination, No Plastic Bags, and Proper E-waste Disposal. Haulers and municipal collectors received over 2,000 stickers for distribution to residents in 2023 and 2024; however, only 1,000 were distributed due to resident responses to the bilingual stickers.
- Rockland Green started a Battery Awareness Program to educate residents about proper battery disposal. This program commenced on May 19, 2022. During 2023 and 2024, battery awareness information was included in the annual door hanger campaign, providing pre-notification to residents, related to the annual Feet on the Street initiative.
- Rockland Green provided 17,183 blue and 8,980 green curbside recycling bins as well as 861,600 leaf bags to municipalities for distribution to their residents at no cost.
- In total, Rockland Green provided 99,600 compostable food bags and 1,060 food kits (consisting of a composting bin and compostable bags) to residents during 2023 and 2024 for the organics drop-off program for residents. As Rockland Green expands the organics drop-off program, Rockland will continue to distribute composting bags and kits to residents for free to the participating municipalities of Clarkstown, Haverstraw, and Orangetown.
 - Rockland Green provided 27,000 compostable bags and 30 food kits in 2023 and 24,600 compostable bags and 40 food kits in 2024 to residents in the Town of Orangetown at no cost as part of the residential drop-off program for organics.
 - Rockland Green expanded the organics program to the Town of Clarkstown in late 2023. They provided 15,000 compostable bags and 495 food kits in 2023 and 25,000 compostable bags and 270 food kits in 2024 to residents in the Town of Clarkstown at no cost as part of the residential drop-off program for organics.
 - Rockland Green expanded the organics program to the Town of Haverstraw in late 2024. They provided 8,000 compostable bags and 225 food kits in 2024 to residents in the Town of Haverstraw at no cost as part of the residential drop-off program for organics.
- Multi-Unit Dwellings (MUD's) were evaluated by a consultant. An assessment of the compliance of MUD's with Article XVII was generated. Based upon the consultant's findings, Rockland Green assessed how to increase participation or follow up with RCDOH in issuance of a violation to Article XVII for MUD's.
 - The purpose of Article XVII of the Rockland County Sanitary Code is stated as follows: "It is hereby declared that the purpose of this Article is to encourage and facilitate the maximum recycling practicable on the part of each and every resident and business within Rockland County" (<http://rocklandgov.com/departments/health/environmental-health/sanitary-code/>).
 - Rockland Green started an internal program for a Solid Waste Compliance Aid in 2023 to complete ongoing assessment of MUD's. Rockland Green evaluates MUD's to determine if they are in compliance with Article XVII. If it is determined that a MUD is not compliant

with Article XVII, the violation is documented and follow-up site inspections are conducted of the MUD with the RCDOH to inquire why it is noncompliant, as well as conduct follow-up visits to ensure the MUD becomes compliant with Article XVII. Violations vary, an example violation includes insufficient recycling disposal receptacles, signage, or instructions on how to separate recyclables from the waste. Rockland Green is continually completing evaluations of MUD's that are flagged as noncompliant with Article XVII.

- For the villages of New Square and Kaser, it was identified that the size of totes provided was the main barrier to participation. These villages have been reluctant to separate residential containers due to the community's large nuclear family structure. Through the work of the Education and Outreach Department, residential units will be provided one 96-gallon totes for the collection of commingled containers to encourage participation. A pilot program is planned for the Town of New Square to add 96-gallon totes for commingled recycling. Large bins will allow individuals to recycle more efficiently. The program will be evaluated and considered for expansion to other communities in 2025.
- In addition, Department of Health (DOH) has to provide a summary of work that they complete. The DOH actively engages businesses and multi-family dwellings that are not in compliance. Fines are issued for violations. The DOH will revisit violators to check for compliance, and reissue fines as needed.
- **Schools (K-12) and College/University:**
 - Rockland Green was active in engaging schools through means such as virtual and in-person events, online engagement, and through the dispersal of educational and promotional materials.
 - Rockland Green continued to provide a "Green Schools of Rockland Guide" to assist school districts with developing sustainable recycling and waste reduction programs or to expand existing programs. The guide is posted on the rocklandgreen.com website in the Schools section, along with contact information for the Rockland Green Education Coordinator for assistance with program development.
 - Rockland Green previously hosted tours at the Herb Reisman Environmental Education Center to students in grades K-12 prior to the decommissioning of the MRF, where the Herb Reisman Environmental Education Center was located. Tours were discontinued after November 7, 2019. Rockland Green is working towards a new education outreach center to continue education tours. The new education outreach center will be located on the lower level of the Rockland Green office at 172 Main Street, Nanuet, New York 10954. The education outreach center will include exhibits related to solid waste management practices and an immersive theater. The education center is expected to open on June 15, 2026.
 - Rockland Green conducted presentations and table exhibits at school and community events, such as health fairs, summer programs and STEM/STEAM, reaching close to 21,000 students, teachers and faculty in 2023 and 2024. Approximately 1,040 students were reached during presentations given to clubs and camps in 2023 and 2024. A total of 255 presentations were given in 2023 and 2024.
 - Rockland Green gave presentations at the Rockland County Community college in 2023 and 2024 during earth day, environmental day as well as other times throughout the year.
- **Commercial/Institutional and Municipal/Government:**
 - Rockland Green's Recycling Coordinator called over 1,090 businesses in 2023 and 2024 to discuss challenges and needs for each to increase their recycling participation. Rockland Green also engages commercial/institutional and municipal/government institutions and through other

means such as online engagement and through the dispersal of educational and promotional materials.

2.2.2 Yard waste Composting – Increase Participation at Facilities and Promote Back-Yard Composting Efforts

- Continuing to evaluate properties for additional yard waste facility. The Hillburn facility became inactive as of fall 2018.
- Purchased the French Farms Yard Waste Composting facility which Rockland Green previously leased to continue to act as a municipal leaf composting area. The renewal application for the French Farms Yard Waste Composting facility was submitted on June 5, 2023.
- Increase Participation and Back-Yard Composting:
 - Rockland Green was active and effective during the 2023-2024 reporting period in engaging in back-yard composting promotion by continuing in-person events when possible and providing composting materials. Rockland Green also promoted back-yard composting through other means such as virtual events, online engagement, educational videos, and through the dispersal of educational and composting materials.
 - Rockland Green provided 861,600 biodegradable yard waste collection bags to municipalities to provide to their residents at no cost.
 - Rockland Green continues to provide rain barrels and compost bins for sale at cost through a contract with Cornell Cooperative Extension. A total of 54 compost bins and a total of 74 rain barrels were sold in 2023 and 2024. Since 2015, a total of 322 compost bins and 359 rain barrels have been sold.
 - Rockland Green has continued to work with Cornell Cooperative Extension to conduct backyard composting education presentations and tabletop exhibits at libraries, farmer's markets, scout meetings, schools, and gardening groups.
 - The grasscycling backyard composting, and kids composting distribution continued at outreach and tabling events throughout 2023 and 2024.

2.2.3 Food Waste Recycling – Evaluate Incorporating into Program

- Collaborated with local food pantries and food banks to determine improvements to increase diversion of usable food. Rockland Green promotes food donation through their partners at Together Our Unity Can Heal, Inc. (TOUCH). Rockland Green applied for and received a NYSDEC grant to aid in the reduction of food waste by providing vehicles, refrigerators, and freezers for food pantries/banks. During this Biennial Update period, TOUCH has donated over 1,340 tons of food that otherwise would have been landfilled.
- Rockland Green has available educational videos about backyard composting, smart shopping, food storage and food preservation, which are posted to their YouTube page, Green Up Rockland, and on their website, rocklandgreen.com.
- Prior to 2019 the Co-Composting Facility was permitted by the NYSDEC to accept 20 tons per day of food waste.
- Through the Green Schools Program, Rockland Green encourages schools to incorporate Food Share Programs in their cafeteria. Food/beverages are provided to students throughout the day and are sometimes donated to local food pantries.
- Evaluation: The use of anaerobic digesters at the Rockland County Wastewater Treatment Plant has been evaluated and it has been determined to be financially infeasible at this time. It will continue to be evaluated to determine if it is financially feasible in the future.

- In 2022, a pilot program for an organics residential drop-off was completed for one of the Towns of Orangetown. An unmanned drop-off center was open to residents and organic waste was picked up once a week and transported to the Co-Composting Facility. This program was expanded in 2023 to include all of the Towns of Orangetown and local breweries. The program was further expanded to the Town of Clarkstown in 2023 and the Town of Haverstraw in 2024. Compostable bags and food kits were distributed to residents in the Towns of Orangetown, Clarkstown and Haverstraw free of charge throughout 2023 and 2024 to encourage participation. Compostable bags and food kits will continue to be distributed to residents for a fee. A total of 123.32 tons of source-separated organics (SSO) were collected through the program in 2023 and 2024.
 - Rockland Green will continue to expand the program. An additional drop-off location for the Town of Stony point was provided in April 2025.

2.2.4 Biosolids

- The Biosolids Co-Composting Facility was permitted by the NYSDEC to accept 20 tons per day of food waste in addition to biosolids and yard trimmings.
- In 2023, the Facility received 5,975.09 dry tons of biosolids, 36,831.18 tons of yard waste and 195.69 tons of food waste, and distributed 23,130 cubic yards of compost.
- In 2024, the Facility received 5,866.50 dry tons of biosolids, 37,766.18 tons of yard waste and 236.50 tons of food waste, and distributed 23,578 cubic yards of compost.
- Rockland Green completed a feasibility study to expand the Biosolids Co-Composting Facility. The feasibility study evaluated expanding the Facility by 30,000 SF and installing two additional driers for the sludge. This could increase the capacity potentially by an additional 20,000 tons per year, dependent upon vector reduction capabilities. Rockland Green determined that expansion was not feasible at this point in time due to uncertainty in regulations regarding PFAS in biosolids. Rockland Green may evaluate future considerations regarding PFAS regulations for biosolids and the economic feasibility for the expansion.

2.2.5 Recyclables Pre-Processing Facility

- The system within the Recyclables Pre-Processing Facility was demolished as part of the MRF improvements and shredded paper is accepted at the Facility to be trans-loaded to direct bailing operations within the MRF.

2.2.6 Public Spaces Recycling

- Parks, Sports Fields, Municipal Curbside: Some municipalities are purchasing their own Clear Stream Recyclers to increase bottles and cans recycling.
- Special Events: Rockland Green continues to offer 23 Clear Stream Recyclers for use at public events.

2.2.7 PAYT/SMART Programs

- Evaluation and Implementation: Rockland Green's Board has discussed the potential implementation of these programs at Municipal Green Team meetings.
 - Municipalities currently have not shown interest in instituting this type of program at this time, Rockland Green will continue to encourage this to local municipalities.

2.3 SCHEDULE NO. 3 – REUSE AND REDUCTION

2.3.1 Household Hazardous Waste Facility

- Continue to Optimize HHW Operations:
 - Rockland Green developed and mailed a brochure with information for all the Rockland Green facilities, including the HHW Facility, to residents annually. The brochure details the HHW Facility hours of operation, directions, acceptable and unacceptable materials, helpful hints to avoid hazardous products, and the HHW Hotline phone number. The brochure and weekend drop off schedule are also posted on the rocklandgreen.com website.
 - HHW Facility participates in reuse programs described in the section below.
- Evaluate E-Waste Collection:
 - Rockland Green accepts E-Waste at the HHW Facility. In 2023 and 2024, the HHW Facility recovered nearly 1.1 million pounds of E-Waste which was sent for recycling.
 - Rockland Green continues to distribute an e-waste sticker that informs residents of the current law and provides information regarding disposal options. In 2023 and 2024, the program provided 2,000 stickers to haulers and municipal workers for application on e-waste placed at the curb with 1,000 actually distributed.
- Battery Awareness Program
 - Rockland Green distributes Battery Recycling Awareness door hangers and brochures to residents to increase awareness of proper battery recycling measures.
- Continue Coordination with Pharmaceutical Take Back Programs:
 - Rockland Green continued to distribute two brochures on medication and SHARPS disposal in Rockland County in 2023 and 2024. Beginning in 2017, Rockland Green collaborated with Rockland County Sheriff's Office to begin including controlled substance medication at the HHW Facility during the ten weekend drop-off events, in addition to uncontrolled medication disposal during regular hours. This program was continued during this reporting period. Educational materials provide location and contact information for all available outlets for residents to dispose of all types of medication as well as SHARPS.
- Rockland Green continued to print multi-lingual flyers for local pharmacies to distribute to their customers regarding medication disposal options.

2.3.2 Postconsumer Paint Collection Program

- Rockland Green offers disposal of paint through its HHW programs.
- Rockland Green's HHW facility is permitted to accept postconsumer paint during stated operating hours. As of May 1, 2022, Rockland Green entered into an Indirect Contract with PaintCare with its operator Clean Harbors.

2.3.3 Deconstruction

- Implementation and Expansion Evaluation:
 - Rockland Green coordinates with large-scale contractors on waste disposal, reuse and recycling options when aware of approved projects. However, there were no deconstruction projects in 2023 or 2024 that notified and engaged Rockland Green directly. There is no requirement for notification to Rockland Green when a demolition permit is issued, Rockland Green is unable to track metrics of waste or recyclables from deconstruction projects that it receives at its facilities separately unless they are previously notified by the contractor.

- Rockland Green is looking to increase the capacity at Clarkstown from 350 tons/day to 700 tons/day to accommodate the demand for concrete and asphalt recycling from contractors.
- Materials collected are sold for reuse, millings are used for driveway paving and concrete is approved for NYSDOT use.

2.3.4 Materials Exchange/Reuse

- Implementation and Expansion Evaluation:
 - Rockland Green hosted six Repair Cafés between 2023 and 2024. Events were coordinated through partnerships with RCSC and the host sites. The Repair Cafés offered residents an opportunity to have broken items repaired at no cost by volunteer repair coaches. Additionally, Rockland Green help a LampFest repair event as part of the Rockland County YouthFest, offering the opportunity for attendees to repair lamps at no cost. The events resulted in over 462 attendees with 361 repairs made to items ranging from small electrical appliances, to clothing, furniture, and digital devices.
 - Rockland Green is looking to partner with local tradesmen to teach residents how to repair their items for future repair café events.
 - Rockland Green partners with PC Users Group and Sam's Appliance to refurbish donated computers and distribute them to needy individuals.
 - Rockland Green held discussions to gauge interest on a Reuse Center and visited the Reuse Center in Westchester. The Reuse Center would allow the community to bring in unwanted items for reuse, unwanted items could range from electrical appliances, clothing, furniture, and digital devices.

2.3.5 Product Stewardship

- Promotion and Support
 - Rockland Green stays informed on current product stewardship initiatives and attends meetings on an as requested basis.

2.4 SCHEDULE NO. 4 – NON-RECYCLABLES

2.4.1 Data Collection and Alternative Disposal

- Data Collection and Operations:
 - Rockland Green continues to internally distinguish between MSW and C&D tonnage at their Transfer Stations by using a different code for C&D loads. This data collection will help them further evaluate their C&D waste stream and evaluate alternative options for C&D handling, recycling, and disposal in the future. Based on current contracts, there is no economic advantage to segregating C&D waste for haul and disposal. Further analysis for C&D diversion will occur when the hauling and disposal contracts are up for renewal.
 - Rockland Green also internally distinguishes food waste tonnage at their Transfer Stations by using a different code for food waste loads. This helps to evaluate potential food waste diversion.
 - In order to further increase landfill diversion rates, Rockland Green continues to work with various contractors, developers, and municipalities to assist with recycling applications for construction projects for LEED certification.
 - Rockland Green conducted a Dual-Stream Recyclables Characterization Study in December 2020. The study provided a snapshot in time with regard to contamination related to Rockland Green's dual stream program. The study identified that the comingled container component

produced 7.9% of non-recyclable materials, with an additional 17.9% recyclables improperly prepared (bagged or included fiber). The residential fiber component consisted of 4.9% non-recyclables with an additional 7.6% improperly prepared (bagged, cartons, containers). Additionally, an MSW Waste Characterization Study was conducted in March 2021 which identified approximately 20% by weight of the MSW delivered to Rockland Green's facilities consisted of targeted or program recyclables. As a result of these studies, Rockland Green implemented and continues their Feet on the Street program, described in Section 2.5, to help reduce contamination.

2.4.2 Alternatives

- Evaluate Alternative Waste Treatment Techniques and Transportation Methods:
 - Rockland Green continues to attend conferences and seminars in order to evaluate alternative techniques for waste treatment and transportation methods for waste hauling.
 - Rockland Green issued an RFEI in January 2020 on alternative waste treatment techniques, receiving 15 responses worldwide. In May 2020 Rockland Green held virtual interviews to discuss the alternate techniques and is currently evaluating the regulation and siting requirements for the responses provided. Rockland Green resent letters in March 2023 to those that provided responses to the RFEI in 2020. Rockland Green is also working with RRT Design and Construction to evaluate other technologies that may be viable since the RFEI was issued in 2020 for consideration.
 - Rockland Green is evaluating alternatives for waste treatment, with waste to energy identified as a potential option that is commercially viable. Based on the responses to the RFEI, a 6-12 acre area would be required for an alternative waste treatment facility. Rockland Green is conducting siting evaluation agnostic to technology. A GIS study was performed for suitable land parcels throughout the County. Results indicated the potential for nine (9) parcels. The nine (9) parcels will be inspected, of which two (2) will ultimately be selected for additional evaluation and due diligence. The Regulatory Accountability and Process Improvement Act (RAPID ACT) will be reviewed to possibly assist in streamlining the environmental process.
 - Anaerobic Digestors have been evaluated at the Rockland County Wastewater Treatment Plant. The addition of Anaerobic Digestors has been determined to be financially infeasible at this time. Rockland Green will continue to evaluate whether this option is financially feasible at the Rockland County Wastewater Treatment Plant or at other facilities in the future.
 - In 2022, a pilot program for an organics residential drop-off was implemented in the Town of Orangetown. An unmanned drop-off center was open to residents and organic waste was picked up once a week and transported to the Co-Composting Facility. This program was implemented as a permanent program for the Town of Orangetown. The program was expanded in 2023 to the Town of Clarkstown and in 2024 to the Town of Haverstraw. Compostable bags and food kits were distributed to residents in the Towns of Orangetown, Clarkstown and Haverstraw free of charge in 2023 and 2024 to encourage participation. Rockland Green also advertised the program in a mailer and on its website to encourage participation. Compostable bags and food kits will continue to be distributed to residences for free to participating municipalities. 123.32 tons of SSO were collected in 2023 and 2024 through this program.
 - Rockland Green will continue to expand the program. An additional drop-off location for Stony Point was established in April 2025.

2.5 SCHEDULE NO. 5 – EDUCATION AND OUTREACH

Rockland Green's website (<https://www.rocklandgreen.com/>) provides a comprehensive overview of the organization and its different methods for public engagement. There are links to its social media pages, program initiatives, and resources for residents, education officials and businesses. Additionally, it provides a "What Goes Where" page, where the public can learn how to recycle or dispose of particular items. The different program initiatives described below can be accessed through Rockland Green's website.

2.5.1 Overall Program Initiatives

- Continue to Expand Education and Outreach Initiatives:
 - Rockland Green was able to remain active and effective in engaging their community by continuing normal outreach as well as through other means such as virtual and in-person events, online engagement, such as their enhanced website and social media pages, educational videos, and through the dispersal of educational materials.
 - The Herb Reisman Environmental Education Center was located in the Hillburn facility, tours of the education center were discontinued when the MRF ceased operations. Rockland Green is working towards a new education outreach center. The new education outreach center will be located on the lower level of the Rockland Green office at 172 Main Street, Nanuet, New York 10954. The education outreach center will include exhibits related to solid waste management practices and an immersive theater. Rockland Green is working with Whirlwind Creative on the design for the education outreach center. An NTP to begin work will be issued September 18, 2025 and work is to commence in early 2026 for construction, with an anticipated opening date on June 15, 2026.
 - Rockland Green conducted presentations and table exhibits at school and community events, such as health fairs, summer programs and STEM/STEAM, reaching close to 21,000 students, teachers and faculty in 2023 and 2024. Approximately 1,040 students were reached during presentations given to clubs and camps in 2023 and 2024. A total of 255 presentations were given in 2023 and 2024.
 - Presentations and tabletop exhibits are also offered for public events, businesses and civic groups, in addition to schools. These events reached a total of 4,681 residents and businesses in 2023 and 2024. 14 kiosks/tabletop presentations to the public were also completed during the reporting period.
 - Rockland Green had three interns in 2023 and six interns in 2024. Interns worked on environmental education and outreach initiatives, including:
 - Recycling Door Hanger Project: Members distributed over 4,600 educational door hangers across Rockland County to single family homes in 2023 and 2024.
 - Videos: Created three (3) educational videos on food scraps, and proper recycling and waste disposal which are posted on the rocklandgreen.com website, YouTube Channel, and have been used in Rockland Green's social media programs.
- Reduction of Contamination
 - Rockland Green began strategizing about solutions for addressing cross contamination of materials at the Transfer Stations in 2018. Load inspections began in 2019 to identify problem generators. Rockland Green conducted a Dual-Stream Recyclables Characterization Study in December 2020. The study provided a snapshot in time with regard to contamination related to Rockland Green's dual stream program. The study identified that the comingled container component produced 7.9% of non-recyclable materials, with an additional 17.9% recyclables improperly prepared (bagged or included fiber). The residential fiber component consisted of

4.9% non-recyclables with an additional 7.6% improperly prepared (bagged, cartons, containers). Additionally, an MSW Waste Characterization Study was conducted in March 2021 which identified approximately 20% by weight of the MSW delivered to Rockland Green's facilities consisted of targeted or program recyclables. As a result of these studies, Rockland Green implemented and continues their Feet on the Street program, described below.

- Rockland Green has a "Feet on the Street" Program, the goal of which is to increase the quality and quantity of material set out to the curb for collection.
 - Rockland Green partnered with the Rockland Conservation & Service Corps Youth Bureau to start the Feet on the Street program in 2021. As part of the summer Feet on the Street program, volunteer youth travel with Rockland County employees ahead of collection vehicles and visually inspect recycling bins for contamination. The bins are tagged with either a "Great Job!" or an "Oops!" tag as appropriate. Bins tagged with an "Oops!" are not collected by collection vehicles. The tags note the contamination observed and have contact information for residents to call Rockland Green directly.
 - To target problem areas, Rockland Green coordinates with haulers to determine what areas have higher levels of contamination. The program was conducted within all 5 towns and 18 villages in 2023 and 2024.
 - For the reporting period there were 2,612 collection/observations made. Of the total, 42 observations were inconclusive (discussed in Section 2.1.2). The RCDOH identified 19 violations of flow control where haulers failed to deliver waste to a designated facility. RCDOH identified 82 mixed loads delivered to the transfer stations, mixed loads consist of waste mixed w/ recyclables listed under Article XVII. Based on observations conducted at the transfer station the RCDOH conducted further inspection to over 720 generators, which included schools, businesses, and multifamily complexes.
- Website Utilization:
 - Rockland Green continued to reinforce their online presence and effectively utilize their website and social media to engage their communities.
 - The Rockland Green website was redesigned in March 2018 and continues to be used as the primary source of information for the public. In 2023 and 2024 there were over 217,442 website visits and over 141,565 users.
 - Rockland Green launched a Facebook page in July 2017. In 2023 and 2024 Rockland Green received 124,895 impressions, 1,476 page likes and had 24,023 page views. Its average monthly organic reach was 4,336 people.
 - Rockland Green launched an Instagram account in August 2018. In 2023 and 2024 Rockland Green had 903 followers and received over 1,429 likes and 12,868 average monthly impressions on posts.
 - Rockland Green launched an X (formerly Twitter) account in April 2016. In 2023 Rockland Green had 164 tweets and reposted once in 2024. Rockland Green has discontinued use of their X account and is focusing on other social media platforms to engage their communities.
 - Rockland Green launched an Events page in December 2024. Since launching, Rockland Green had 209 Sessions, 183 Users, 8 File Downloads, and 52 Button Clicks.
 - Rockland Green, with assistance from Trainer Associates created a Mobile Dashboard in 2021 for their What Goes Where program, allowing users to learn how to recycle or dispose of items such as medical waste, organics, food scraps, plastic toys, styrofoam, and more right from their smartphone or tablet. Residents are made aware of the tool through Rockland Green's social media platforms, brochures, and handouts. During 2023 and 2024, approximately 55% of the dashboard visitors accessed the program from desktops, 43% from mobile devices, and 2% from tablets. The most frequently searched words were "batteries" or "battery cell".

- Rockland Green launched a TikTok account on January 4, 2024 to assist in social media connections and getting educational information distributed. In 2024, Rockland Green posted 26 videos on TikTok.
- Support Local, State & National Organizations: Continue to support PSC, SWANA, NYSAR3, NYSASWM, KRB, HVRC Materials Management Working Group, TOUCH, and GFOA. Rockland Green has been an ongoing sponsor for KRB's Great American Clean up and is also a KRB member.

3.0 IMPLEMENTATION SCHEDULE

3.1 INTRODUCTION

The Rockland Green Final SWMP for the 2014 through 2023 planning period includes an implementation schedule to illustrate a timeline for tasks being performed on a daily basis and tasks for potential improvements and additional program elements. A Planning Period Extension (PPE) to extend the current SWMP planning period by two years from 2023 to 2025 was approved by NYSDEC on November 20, 2023. A second two-year extension request to 2027 is incorporated into this Biennial Update. The implementation schedules have been extended through 2027 to include this additional 2-year extension period.

The tasks are grouped together into five separate schedules, as follows:

- Implementation Schedule No. 1 – General
- Implementation Schedule No. 2 – Recyclables and Waste Reduction
- Implementation Schedule No. 3 – Reuse and Reduction
- Implementation Schedule No. 4 – Non-Recyclables
- Implementation Schedule No. 5 – Education and Outreach

Updates to the Implementation Schedules to include accomplishments for 2023 and 2024 are provided below. Section 2 of this Biennial Update discusses these accomplishments in more detail.

3.2 UPDATED IMPLEMENTATION SCHEDULES

The following updated implementation schedules show a vertical red status date line on December 31, 2024, representing the end date for this Biennial Update period. A gray “baseline” represents the implementation schedule as presented in the SWMP to use as a reference for tasks that have been pushed into the future. Tasks that have either been accomplished or have made progress are displayed in purple while tasks to be performed in the future are displayed in green.

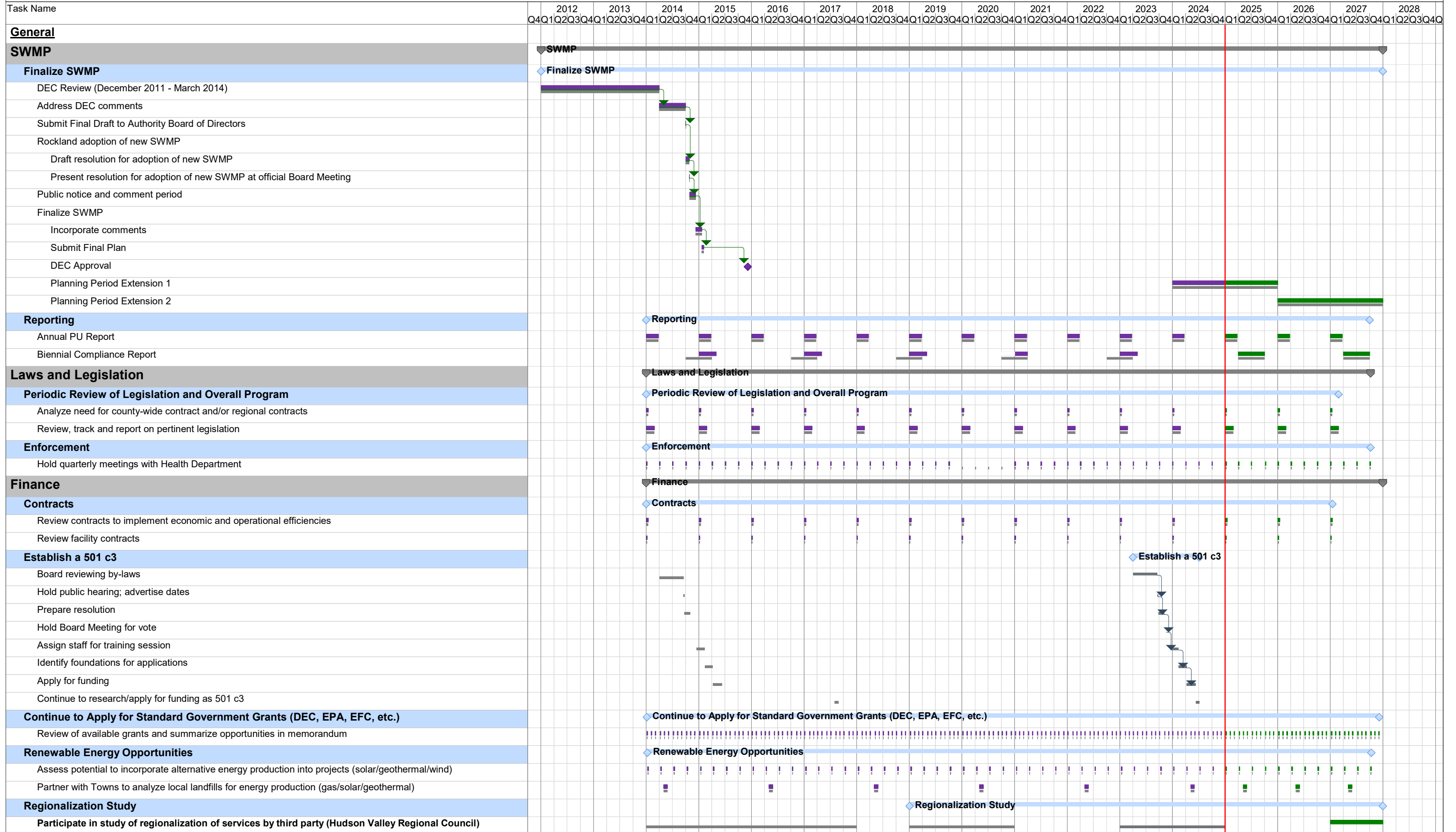
Tasks outlined in the implementation schedule are being conducted on an ongoing basis to meet the needs and goals of Rockland Green’s waste management and recycling operations.

The additional yard waste facility task and evaluation of alternative transportation methods task are no longer an initiative and have been removed from the implementation schedule. An additional yard waste facility is no longer an initiative with the purchase of the French Farms Yard Waste Composting facility. With long term contracts in place for waste disposal in New York State, waste will be trucked to disposal facilities for the next several years without the need for alternative transportation/disposal methods. No other significant changes to the LSWMP occurred in 2023-2024.

During the current reporting period, Rockland Green did not encounter obstacles that prevented them from accomplishing tasks outlined in the implementation schedule.

Implementation Schedule No. 1 - General

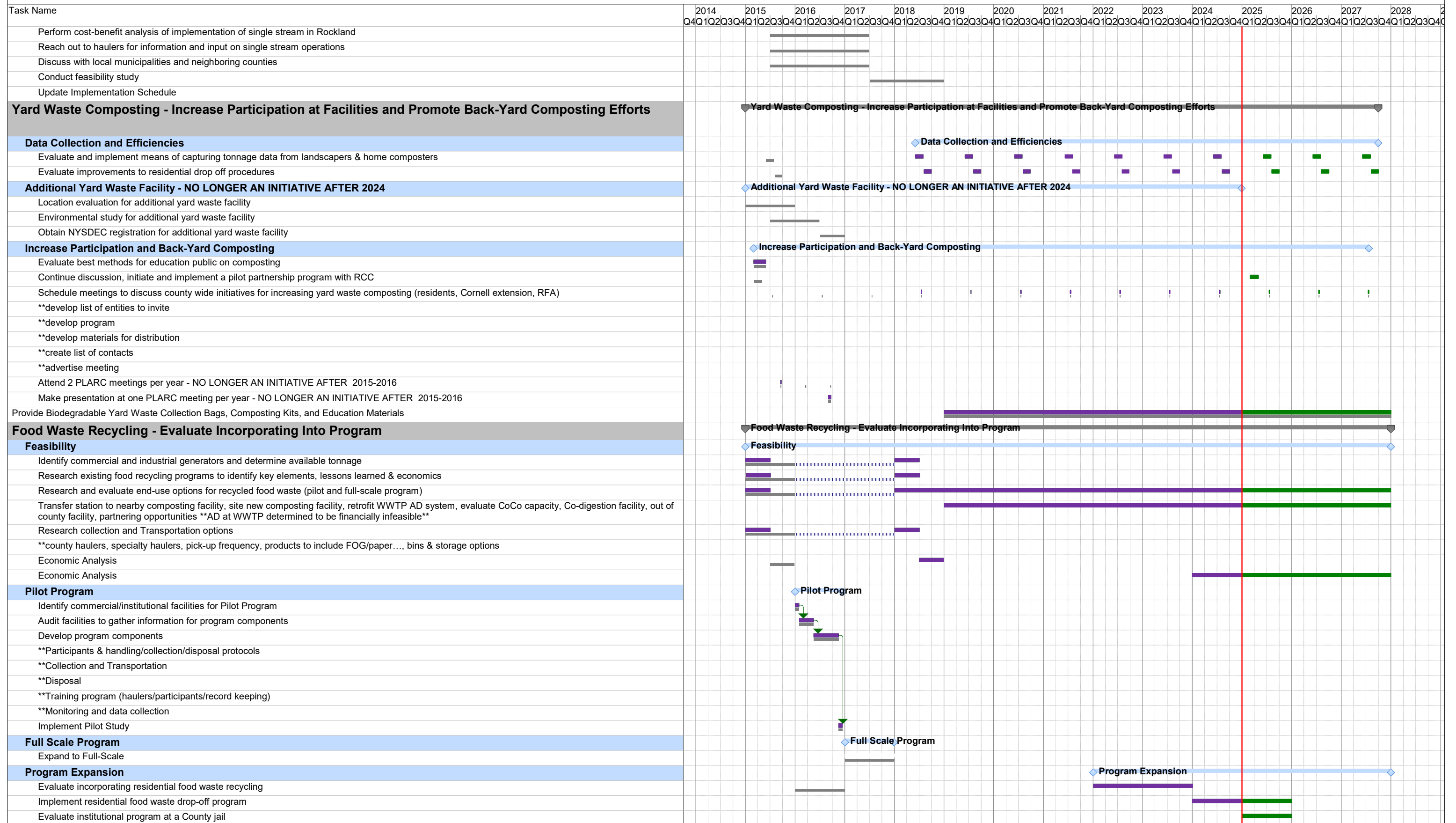
Rockland County Solid Waste Management Plan with Planning Period Extensions 2014 - 2027, Compliance Report Update 2023-2024



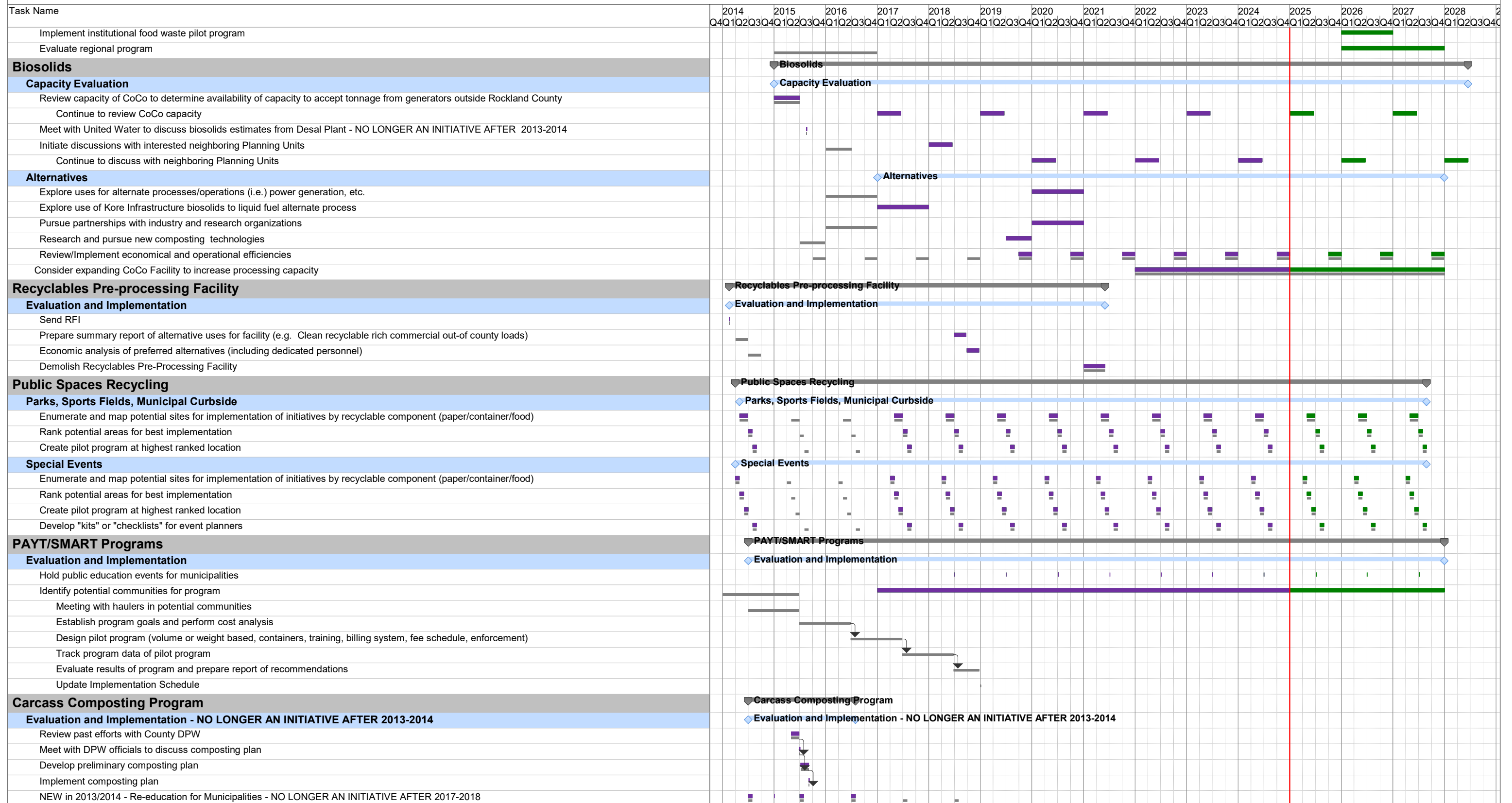
Implementation Schedule No. 2 - Recyclables and Waste Reduction
 Rockland County Solid Waste Management Plan with Planning Period Extensions 2014 - 2027, Compliance Report Update 2023-2024

Task Name	2014	2015	2016	2017	2018	2019	2020	2021	2022	2023	2024	2025	2026	2027	2028	
	Q4	Q1	Q2	Q3	Q4	Q1	Q2	Q3	Q4	Q1	Q2	Q3	Q4	Q1	Q2	
Recyclables and Waste Reduction																
Materials Recovery Facility - Increase Participation and Recyclables Through Facility	◆ Materials Recovery Facility - Increase Participation and Recyclables Through Facility															
Accepted Recyclable Materials at MRF	◆ Accepted Recyclable Materials at MRF															
Regular discussions with Carton Council regarding adding gable top/aseptic packages to recycling stream																
Meetings with MRF operator to discuss current initiatives and progress																
Permit application to increase MRF capacity (approval pending)																
Residential Participation	◆ Residential Participation															
Identify a community/neighborhood with the lowest tonnage/participation rate each year																
Meet with municipal officials of this community/neighborhood each year to understand unique challenges such as cultural, lingual, and demographics																
Schedule work sessions with municipal officials and staff of these communities to develop a plan for improved participation																
Track participation within identified communities/neighborhoods, in response to outreach modification																
Multi-Family Participation	◆ Multi-Family Participation															
Identify a complex with the lowest tonnage/participation rate each year																
Meet with property owner/building management each year to understand unique challenges to participation																
Schedule work sessions with property owner/building management to develop a plan for improved participation																
Track participation within complex, in response to outreach modification																
Implement pilot program for larger totes																
Track participation in pilot program																
Schools(K-12)	◆ Schools(K-12)															
Create/Update database of public schools by district and privates, contacts and waste handling practices																
Identify one public school district and three private schools with the lowest tonnage and participation rates to focus outreach and education each year																
Meet with school representatives to determine challenges/needs, such as, student/staff participation, collection contract, food and custodial services, equipment, funding, and education																
Schedule meetings with school officials, staff, teachers, and students to develop a plan for improved participation																
Develop system to track ROI (participation, education, attendance at meetings, programs offered at schools, reduction)																
Track ROI																
Colleges	◆ Colleges															
Create/Update database of colleges, contacts and waste handling practices																
Identify a college with the lowest tonnage and participation rate to focus outreach and education each year - NO LONGER AN INITIATIVE AFTER 2017-2018																
Meet with school representatives to develop a plan for improved participation when requested																
Schedule meetings with college representatives to determine challenges/needs, such as student/staff participation, collection contract, food and custodial services, equipment, funding, and education when requested																
Develop system to track ROI (participation, education, attendance at meetings, programs offered at schools, reduction) when requested																
Track ROI																
Commercial/Institutional	◆ Commercial/Institutional															
Create/Update database of commercial & institutions, contacts and waste handling practices																
Identify businesses to visit and focus outreach and education initiatives																
Meet with business representatives/staff to determine challenges/needs, such as employee participation, collection contract, housekeeping services, equipment, funding, and training when requested																
Schedule meetings with business representatives/staff to develop a plan to increase participation when requested																
Develop program to track ROI when requested																
Track ROI																
Municipal/Government	◆ Municipal/Government															
Create/Update database of all municipal and government facilities, contacts and solid waste practices																
Identify one facility a month to meet with their representatives and discuss potential improvements - NO LONGER AN INITIATIVE AFTER 2017-2018																
Meet with representatives/staff to determine challenges/needs, such as employee participation, collection contract, housekeeping services, equipment, funding, and training when requested																
Schedule meetings with representatives/staff to develop a plan to increase participation when requested																
Develop program to track ROI when requested																
Track ROI																
Evaluate Single Stream Recycling - NO LONGER AN INITIATIVE AFTER 2017-2018	Evaluate Single Stream Recycling - NO LONGER AN INITIATIVE AFTER 2017-2018															
Research single stream operation models in other locations																

Implementation Schedule No. 2 - Recyclables and Waste Reduction
 Rockland County Solid Waste Management Plan with Planning Period Extensions 2014 - 2027, Compliance Report Update 2023-2024

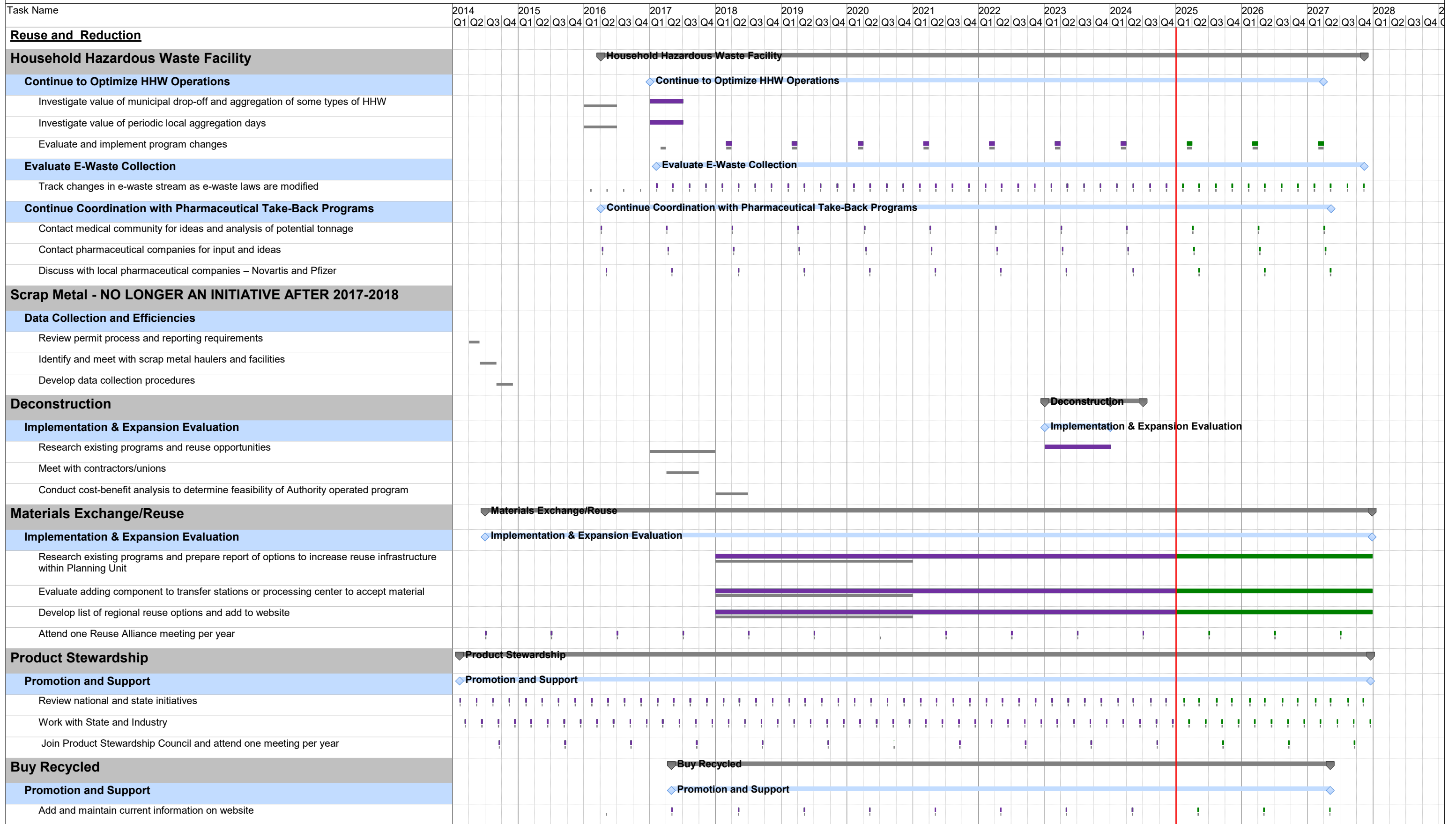


Implementation Schedule No. 2 - Recyclables and Waste Reduction
 Rockland County Solid Waste Management Plan with Planning Period Extensions 2014 - 2027, Compliance Report Update 2023-2024



Implementation Schedule No. 3 - Reuse and Reduction

Rockland County Solid Waste Management Plan with Planning Period Extensions 2014 - 2027, Compliance Report Update 2023-2024



Implementation Schedule No. 4 - Non-Recyclables
 Rockland County Solid Waste Management Plan with Planning Period Extensions 2014 - 2027, Compliance Report Update 2023-2024

Task Name	2014				2015				2016				2017				2018				2019				2020				2021				2022				2023				2024				2025				2026				2027				2028			
	Q4	Q1	Q2	Q3	Q4	Q1	Q2	Q3	Q4	Q1	Q2	Q3	Q4	Q1	Q2	Q3	Q4	Q1	Q2	Q3	Q4	Q1	Q2	Q3	Q4	Q1	Q2	Q3	Q4	Q1	Q2	Q3	Q4	Q1	Q2	Q3	Q4	Q1	Q2	Q3	Q4	Q1	Q2	Q3	Q4	Q1	Q2	Q3	Q4											
Non-Recyclables																																																												
Data Collection and Alternative Disposal																																																												
Data Collection and Operations																																																												
Review and upgrade data collection software (scale house)																																																												
Conduct a waste audit to determine tonnage of C&D material currently being handled by transfer stations																																																												
Meet with operators of TS to discuss options to remove C&D material from landfilled tonnage																																																												
Develop preliminary plan and conduct a feasibility study for alternative C&D handling, recycling and disposal																																																												
Audit waste stream to determine if an increase diversion rate is achievable (potential recyclables in waste stream)																																																												
Complete Waste Characterization Studies of MSW and comingled recyclables																																																												
Alternatives																																																												
Evaluate Alternative Waste Treatment Techniques																																																												
Technology evaluation and identification of full-scale projects																																																												
Conduct site visits																																																												
Feasibility study and economic analysis																																																												
Update implementation schedule																																																												
Evaluate Alternate Transportation Methods (i.e.) Rail, Barge - NO LONGER AN INITIATIVE AFTER 2024																																																												
Review past initiatives																																																												
Update feasibility analysis																																																												
Update implementation schedule																																																												

Implementation Schedule No. 5 - Education and Outreach
 Rockland County Solid Waste Management Plan with Planning Period Extensions 2014 - 2027, Compliance Report Update 2023-2024

Task Name	2014	2015	2016	2017	2018	2019	2020	2021	2022	2023	2024	2025	2026	2027	2028																						
	Q4	Q1	Q2	Q3	Q4	Q1	Q2	Q3	Q4	Q1	Q2	Q3	Q4	Q1	Q2	Q3	Q4	Q1	Q2	Q3	Q4	Q1	Q2	Q3	Q4	Q1	Q2	Q3	Q4	Q1	Q2	Q3	Q4	Q1	Q2	Q3	Q4
Education & Outreach																																					
Overall Program Initiatives	◆ Overall Program Initiatives																																				
Continue to Expand Education & Outreach Initiatives	◆ Continue to Expand Education & Outreach Initiatives																																				
Assess current outreach initiatives for potential improvement and expansion	[Purple bar: 2014 Q1-Q2]																																				
Exhibit or present at three events per year that provide us the opportunity to provide information about the RCSWMA's facilities, programs and services	[Vertical purple lines: 2014 Q1-Q4, 2015 Q1-Q4, 2016 Q1-Q4, 2017 Q1-Q4, 2018 Q1-Q4, 2019 Q1-Q4, 2020 Q1-Q4, 2021 Q1-Q4, 2022 Q1-Q4, 2023 Q1-Q4, 2024 Q1-Q4, 2025 Q1-Q4, 2026 Q1-Q4, 2027 Q1-Q4]																																				
Create/enhance resources for schools and colleges, such as, posting resources on website, list serve, posters, decals, signage, promotional materials and incentive programs	[Purple bars: 2017 Q2-Q4, 2018 Q2-Q4, 2019 Q2-Q4, 2020 Q2-Q4, 2021 Q2-Q4, 2022 Q2-Q4, 2023 Q2-Q4, 2024 Q2-Q4, 2025 Q2-Q4, 2026 Q2-Q4, 2027 Q2-Q4]																																				
Evaluate printed material and identify potential updates	[Purple bars: 2014 Q2-Q3, 2016 Q2-Q3, 2018 Q2-Q3, 2020 Q2-Q3, 2022 Q2-Q3, 2024 Q2-Q3]																																				
Review Education Center program annually	[Purple bars: 2014 Q3-Q4, 2015 Q3-Q4, 2016 Q3-Q4, 2017 Q3-Q4, 2018 Q3-Q4, 2019 Q3-Q4, 2020 Q3-Q4, 2021 Q3-Q4, 2022 Q3-Q4, 2023 Q3-Q4, 2024 Q3-Q4, 2025 Q3-Q4, 2026 Q3-Q4, 2027 Q3-Q4]																																				
Review and Update "A Guide to Recycling and Waste Reduction for Rockland Schools" annually	[Purple bars: 2017 Q3-Q4, 2018 Q3-Q4, 2019 Q3-Q4, 2020 Q3-Q4, 2021 Q3-Q4, 2022 Q3-Q4, 2023 Q3-Q4, 2024 Q3-Q4, 2025 Q3-Q4, 2026 Q3-Q4, 2027 Q3-Q4]																																				
Review and Update "A Guide to Recycling and Waste Reduction for Rockland Business" annually	[Purple bars: 2014 Q4, 2015 Q4, 2016 Q4, 2017 Q4, 2018 Q4, 2019 Q4, 2020 Q4, 2021 Q4, 2022 Q4, 2023 Q4, 2024 Q4, 2025 Q4, 2026 Q4, 2027 Q4]																																				
Conduct one hundred tours per year of our Environmental Education Center & Native Plants Garden for school, civic, and other community groups *Note that tours of Education Center were discontinued. Outreach includes outside presentations at schools, etc.	[Purple bar: 2014 Q1-Q4, 2015 Q1-Q4, 2016 Q1-Q4, 2017 Q1-Q4, 2018 Q1-Q4, 2019 Q1-Q4, 2020 Q1-Q4, 2021 Q1-Q4, 2022 Q1-Q4, 2023 Q1-Q4, 2024 Q1-Q4, 2025 Q1-Q4, 2026 Q1-Q4, 2027 Q1-Q4]																																				
Design new Education Center	[Purple bar: 2024 Q1-Q2, 2025 Q1-Q2]																																				
Construct new Education Center	[Green bar: 2025 Q3-Q4, 2026 Q1-Q2]																																				
Website Utilization	◆ Website Utilization																																				
Post all available resources on website in categories for residential, businesses, schools and legal sectors	[Vertical purple lines: 2014 Q1-Q4]																																				
Update website to be the primary source for information to the public	[Purple bar: 2014 Q1-Q2]																																				
Utilize website for communications, surveys, requests for tours and presenters	[Vertical purple lines: 2015 Q1-Q4, 2016 Q1-Q4, 2017 Q1-Q4, 2018 Q1-Q4, 2019 Q1-Q4, 2020 Q1-Q4, 2021 Q1-Q4, 2022 Q1-Q4, 2023 Q1-Q4, 2024 Q1-Q4, 2025 Q1-Q4, 2026 Q1-Q4, 2027 Q1-Q4]																																				
Post availability of tours and presenters on website and through targeted mailings	[Vertical purple lines: 2015 Q1-Q4, 2016 Q1-Q4, 2017 Q1-Q4, 2018 Q1-Q4, 2019 Q1-Q4, 2020 Q1-Q4, 2021 Q1-Q4, 2022 Q1-Q4, 2023 Q1-Q4, 2024 Q1-Q4, 2025 Q1-Q4, 2026 Q1-Q4, 2027 Q1-Q4]																																				
Annual Rockland Recycles Awards Program	◆ Annual Rockland Recycles Awards Program																																				
Continue to identify organizations, agencies, businesses, institutions and government entities that demonstrate excellence in recycling and/or waste prevention	[Purple bar: 2014 Q1-Q2]																																				
Continue to hold Annual Awards Program to showcase three or more success models	[Vertical purple lines: 2015 Q1, 2016 Q1]																																				
Environmental Day - NO LONGER AN INITIATIVE AFTER 2017-2018	◆ Environmental Day - NO LONGER AN INITIATIVE AFTER 2017-2018																																				
Continue to host Annual Environmental Day at the Authority's facilities	[Vertical purple lines: 2014 Q1, 2015 Q1]																																				
Continue to promote the RCSWMA's facilities and programs available to the public to create more awareness and increase participation	[Purple bars: 2014 Q1-Q2, 2015 Q1-Q2]																																				
Continue to increase the number of local environmental exhibitors, vendors, demonstrations and other activities that bring value to attendees	[Purple bars: 2014 Q1-Q2, 2015 Q1-Q2]																																				
Continue to host Rockland Recycles Awards program at the event	[Purple bars: 2014 Q1-Q2, 2015 Q1-Q2]																																				
Promote Existing Rebate Program	◆ Promote Existing Rebate Program																																				
Produce (re-create) newsletter to go out with checks	[Purple bar: 2017 Q3-Q4]																																				
Promote use of rebate \$\$s to go toward Green initiatives - NO LONGER AN INITIATIVE after 2013-2014	[Vertical purple lines: 2014 Q1, 2014 Q2, 2014 Q3, 2014 Q4]																																				
Support Local, State and National Organizations Created to Promote Reduction, Reuse and Recycling	◆ Support Local, State and National Organizations Created to Promote Reduction, Reuse and Recycling																																				
Create list of organizations (name, purpose, meeting dates, events)	[Purple bar: 2015 Q1-Q2]																																				
Maintain active participation	[Vertical purple lines: 2015 Q1-Q4, 2016 Q1-Q4, 2017 Q1-Q4, 2018 Q1-Q4, 2019 Q1-Q4, 2020 Q1-Q4, 2021 Q1-Q4, 2022 Q1-Q4, 2023 Q1-Q4, 2024 Q1-Q4, 2025 Q1-Q4, 2026 Q1-Q4, 2027 Q1-Q4]																																				
Partnerships	◆ Partnerships																																				
Seek out new partnerships with organizations to enhance education and outreach	[Purple bars: 2014 Q1-Q4, 2015 Q1-Q4, 2016 Q1-Q4, 2017 Q1-Q4, 2018 Q1-Q4, 2019 Q1-Q4, 2020 Q1-Q4, 2021 Q1-Q4, 2022 Q1-Q4, 2023 Q1-Q4, 2024 Q1-Q4, 2025 Q1-Q4, 2026 Q1-Q4, 2027 Q1-Q4]																																				
Continue to partner with organizations such as RCA, CCE, KRB, and RFA	[Purple bars: 2014 Q1-Q4, 2015 Q1-Q4, 2016 Q1-Q4, 2017 Q1-Q4, 2018 Q1-Q4, 2019 Q1-Q4, 2020 Q1-Q4, 2021 Q1-Q4, 2022 Q1-Q4, 2023 Q1-Q4, 2024 Q1-Q4, 2025 Q1-Q4, 2026 Q1-Q4, 2027 Q1-Q4]																																				
Waste Wise Program - NO LONGER AN INITIATIVE after 2013-2014	◆ Waste Wise Program - NO LONGER AN INITIATIVE after 2013-2014																																				
Continue to conduct quarterly meetings	[Vertical purple lines: 2014 Q1, 2014 Q2, 2014 Q3, 2014 Q4]																																				
Evaluate methods to increase participation/membership	[Purple bars: 2015 Q1-Q2, 2016 Q1-Q2, 2017 Q1-Q2, 2018 Q1-Q2, 2019 Q1-Q2, 2020 Q1-Q2, 2021 Q1-Q2, 2022 Q1-Q2, 2023 Q1-Q2, 2024 Q1-Q2, 2025 Q1-Q2, 2026 Q1-Q2]																																				
Evaluate cross-over opportunities with EPA program	[Purple bars: 2015 Q1-Q2, 2016 Q1-Q2, 2017 Q1-Q2, 2018 Q1-Q2, 2019 Q1-Q2, 2020 Q1-Q2, 2021 Q1-Q2, 2022 Q1-Q2, 2023 Q1-Q2, 2024 Q1-Q2, 2025 Q1-Q2, 2026 Q1-Q2]																																				

4.0 RESOURCES

4.1 ADMINISTRATION

The Rockland Green staff and Board work together with the municipalities in Rockland County and work in partnership with many Rockland County agencies, such as the, the Sheriff's Department, Rockland County Department of Health, and the Sewer District. Rockland Green employs 32 full time and 8 part time employees to oversee the Solid Waste Management System operations. Rockland Green performs its Solid Waste Management System operation services through the use of its own employees or through contracting with private vendors. No changes have been made to the management structure of Rockland Green since the approval of the latest SWMP.

Below is a summary of the main responsibilities for the personnel at the Rockland Green in charge of managing key aspects of the Solid Waste Management Program.

Executive Director – Gerard M. Damiani, Jr.

Mr. Damiani serves as the Executive Director of Rockland Green and is responsible for implementing the strategic goals and objectives of the organization and giving direction and leadership toward the achievement of the organization's philosophy, mission, strategy, and its annual goals.

Assistant Solid Waste Operations Manager – Ron Ludwig

Mr. Ludwig serves as Rockland Green's Assistant Operations Manager. Mr. Ludwig is responsible for overseeing the day-to-day operations of the Solid Waste Management System. In this capacity, Mr. Ludwig works directly with and supervises Rockland Green's operations and is the primary liaison between the Authority and the private contractors who operate the Authority's various facilities.

Engineer II – Dee Louis

Ms. Louis serves as Rockland Green's Engineer II and is responsible for the inspection of construction and operation contracts and projects, as well as in-house contracts. This involves reviewing and/or preparing procurements, plans, specifications, and contracts, ensuring regulatory and contractual compliance through inspections, and maintaining data for and writing reports.

Director of Finance – Jeremy Goldstein

Mr. Goldstein serves as Rockland Green's Director of Finance and is responsible for assisting the Executive Director and Board of the Rockland Green in the performance of the fiscal duties for which they are responsible.

Director of Constituent Services- Yisroel Eisenbach

Mr. Eisenbach provides effective communication between the Executive Director, Rockland Greens Board and the public, relative to constituent concerns and manages day-to-day interactions with constituents, community relationships, initiatives, and priorities to the public in general.

Intergovernmental Relations Coordinator- Guy Festa

Mr. Festa serves as the liaison between Rockland Green and the Rockland County Department of Health in matters related to Local Law No. 2 (Flow Control) and Article XVII (Source Separation). Mr. Festa is also responsible for planning, organizing, coordination and promotion of projects and initiatives between local, state and federal agencies.

Recycling Coordinator – Joe diFrancesca

Mr. diFrancesca serves as Rockland Green's Recycling Coordinator and is responsible for developing, presenting, and implementing Rockland Green recycling initiatives and programs to the residential and commercial sectors.

Assistant Solid Waste Educator – Jennifer Sheridan

Ms. Sheridan is responsible for developing Rockland Green's Public Education and Outreach Programs. This involves the preparation, publications and distribution of materials related to Rockland Green's education and outreach programs, including coordinating and conducting interactive and virtual presentations at schools, libraries, and community events.

Solid Waste Compliance Aid – Harrison Peck

Mr. Peck is responsible for ensuring compliance and assists in the coordination of waste collection and disposal activities which includes overseeing waste collection schedules, ensuring segregation and packaging of waste and arranging for its safe transportation and disposal in accordance with regulations. The Compliance Aid also monitors, evaluates, and performs on-site audits on recycling programs to ensure compliance with applicable local and state laws and rules and federal regulations, as well as provides assistance to and collaborates with municipalities, residential complexes, businesses and institutions in developing and implementing compliance strategies to effectively comply with mandatory recycling ordinances and laws.

4.2 FINANCIAL STRUCTURES

4.2.1 Revenue Sources

The various solid waste management plan initiatives and programs are funded through the same mechanisms presented in the SWMP: revenue earned through the solid waste disposal charges, tip fees, and revenue from the sale of recyclables. Each is discussed in some detail below. Rockland Green also applies for grants to offset costs which are discussed in Section 2.1 of this Biennial Update.

4.2.2 Solid Waste Disposal Charges (User Fee & Ad Valorem)

User fees are billed to property owners (via property tax bill) for operation and maintenance costs of Rockland Green's facilities. A description of the individual solid waste charges is described below.

Area Benefit Charge – This charge is for capital or debt service costs for Rockland Green's solid waste facilities, i.e. the sludge co-composting facility, the materials recovery facility, the yard waste composting facility, transfer station, and for general administration costs. The Area Benefit Charge is assessed on all properties in Rockland County on an ad valorem basis.

Green Waste Unit Charge, (Per Parcel) – This unit charge is for the operations and maintenance costs for the yard waste composting program for composting all of the leaves, grass, and brush collected in Rockland County. The Green Waste Unit Charge is imposed on a per parcel of real property unit basis.

Household Hazardous Waste Unit Charge, (Per Unit) – This unit charge is for the operation and maintenance costs for the household hazardous waste collection facility. The Household Hazardous Waste Unit Charge is imposed on a per dwelling unit basis.

Transfer Station Facility Unit Charge, (Per Unit) – This unit charge is for the operation and maintenance costs for the transfer stations, which is available to receive municipal solid waste from all of the residential properties in Rockland County. The Transfer Station Facility Unit Charge is imposed on a per dwelling unit basis.

Materials Recovery Facility Unit Charge, (Per Unit) – This unit charge is for the operation and maintenance costs for the MRF. The Materials Recovery Facility Unit Charge is imposed on a per dwelling unit basis.

Sludge Co-Composting Unit Charge, (Per Unit; Water Usage) – This unit charge is for the operation and maintenance costs for the Co-Composting Facility. The Co-Composting Unit Charge is imposed on a per dwelling unit basis with additional units charged to non-residential properties based on actual water usage divided by the average water consumption per dwelling unit.

4.2.3 Tip Fees

Table 4-1 presents the current tipping fees charged at the Rockland Green transfer stations, Co-Composting facility, pre-processing facility, concrete crushing facility and the Clarkstown yard waste facility.

4.2.4 Recyclable & Re-Usable Materials

Rockland Green earns revenue by selling the recyclable and re-usable materials it receives at its facilities. Below describes the various ways Rockland Green earns revenue at each of its facilities.

Materials Recovery Facility:

Rockland Green has performed equipment evaluation and had recommended changes evaluated through quarterly throughput audits. Changes to the system were initiated in 2019. On September 19, 2019, the MRF ceased operations and an MOU with IWS was issued for transloading recyclable materials for processing. In 2020 an RFP was issued for the demolition of the equipment inside of the MRF in order to upgrade the facility. Demolition of the MRF equipment was completed in 2020. In October 2020, an RFP was issued for the design and build of improved, more automated, MRF equipment. Construction of the MRF was completed and began operations starting in July 2023. The MOU with IWS expired at the end of April 2023 and was not renewed. A contract for the operation, maintenance and marketing of recyclables generated by the MRF was awarded to Sims Municipal Recycling.

Rockland Green pays each municipality \$35 per ton for each of the recyclable materials which are transloaded. This helps the municipality defray the cost of collection and transportation while also providing an incentive for residents to recycle.

Crushed glass at the MRF is sorted into three groups for recycling, including fines, medium and large sizes. Fines are used by the County as fill material or mixed in with concrete as a replacement aggregate and used by the County or sold to contractors. In 2023, Rockland Green started working with Urban Mining for recycling of the medium and large glass sizes.

Rockland Green elected to remain a dual stream recycling facility. Because of the relatively clean streams in Rockland Green's dual stream facility, bales of commodities are still being sold while many other communities are struggling to sell their single stream commodity bales. Many towns and cities across the country are re-evaluating their recycling programs. Most of the cities and towns that are reevaluating the programs have a single-stream recycling program. Rockland Green will concentrate their effort on campaigns that remind residents to "recycle right" to decrease contamination.

Co-composting Facility:

In its contract with WeCare Organics, the operator of the Co-Composting Facility, Rockland Green was able to establish a sludge processing guarantee. By working with in-county wastewater treatment plants with regard to sludge percent solids, Rockland Green was able to increase throughput without making any physical plant expansions. This in turn allows Rockland Green to create capacity both for future growth in its current service area and to increase merchant tonnage at favorable rates. As capacity for disposal may become a premium for out-of-County users, this increase in capacity creates a more competitive environment for Rockland Green. Rockland Green continues to pursue out-of-county opportunities to maximize revenues. The facility was

permitted to accept 20 tons per day of food waste. Rockland Green evaluated the technical feasibility of expanding the Biosolids Co-Composting Facility to increase the capacity by an additional 20,000 tons per year. Rockland Green is evaluating the future considerations for regulations related to PFAS in biosolids and the economic feasibility for the expansion.

Concrete Crushing Facility:

Rockland Green has contracted with O'Sullivan Equipment, Inc. to operate, maintain, and market the end products; recycled concrete aggregate (RCA) and asphalt. Similar to the MRF, the commodity pricing of the products sold by the operator of the Crushing Facility and the contracts agreed to with their buyers impact the revenue sharing agreement with Rockland Green. There are multiple end market uses for RCA which are ever expanding while there is a somewhat steady demand for the asphalt. However, the demand for material and associated pricing is still contingent on the health of the economy which ultimately affects the number of construction projects in the area.

Yard Waste Facility:

Rockland Green currently contracts with WeCare Denali, LLC. to operate and maintain Rockland Green's French Farms and Clarkstown Transfer Station yard waste mulching and leaf composting facilities. The mulch produced from the yard waste facility is proportionately returned to municipalities (at no cost) for residential use. Similarly, the leaves are composted, and a portion is given back to municipalities for residential use. The remainder of mulch and compost is purchased by the contractor based on a contractually agreed upon price. Trees and tree parts may be retained by landscapers and tree service firms for processing at private sites and for sale in accordance with the Flow Control Act. Tipping fees are received for commercial and out-of-County materials delivered. During the fall leaf season, however, commercial deliveries of leaves are not subject to a tipping fee.

5.0 SOLID WASTE RECYCLABLES INVENTORIES

Solid waste generation encompasses all the waste produced, including both recyclable and non-recyclable wastes. To determine the total quantity of solid waste generated in Rockland Green's Facilities, the solid waste that is disposed, reused, and recycled is identified.

Rockland Green tracks the waste generation, and recyclables collected at Rockland Green's Facilities through the annual tonnage reports. The Annual Reports for 2023 and 2024 are attached in Appendix A and include listings of destination facilities for solid waste and recyclables generated in Rockland Green's Facilities. Appendix A includes a summary table, Table A-1 – 2023 and 2024 Solid Waste and Recyclables Destination Facilities, with destination facility names, addresses, and total amounts sent to each facility for Solid Waste, Recyclables, and Compost. The data from the 2023 and 2024 annual reports was also used to evaluate Rockland Green's waste generation and recyclable rates. The data from the 2024 annual reports was used as a basis for the projections for the remainder of the planning period as discussed in the following sections.

5.1 SOLID WASTE AND RECYCLABLES

The annual reports for 2023 and 2024 were compiled and the solid waste and recyclables data were separated into the main waste streams, including MSW, C&D, and Biosolids, as shown in Table 5-3: 2023 and 2024 Solid Waste Quantities Based on the Annual Planning Unit Recycling Reports. As stated in Section 2.1 of the SWMP, Rockland Green's transfer stations are not permitted to accept industrial waste. However, Implementation Schedule 2: Commercial/Institutional does include a task to evaluate methods to begin to capture this data, as this data is not directly reportable to the Department of Environmental Conservation.

5.2 WASTE GENERATION AND RECYCLABLES RATES

The MSW generated, disposed, and recycled in 2023 and 2024 within Rockland County was estimated as shown in the attached Table 4-4: Municipal Solid Waste (MSW) Combined Composition Analysis and Projections Table first developed for the SWMP. Rockland Green's 2023 and 2024 annual reports were used, and the New York State Department of Environmental Conservation's (Department's) waste calculator was used to provide a more detailed breakdown of the MSW composition. The Rockland Green quantities reported to the Department for 2023 and 2024 in the annual reports do not reflect all tonnage diverted by generators within the planning unit as commercial, institutional, or residential entities may choose to recycle beyond the utilization of Rockland Green's infrastructure. To account for some of the tonnage that is not captured by Rockland Green, the quantities were adjusted based on information from the Returnable Container Act (RCA), New York State averages and industry data, using a similar approach as the SWMP and the 2021-2022 Biennial Update.

The attached Table 4-4: MSW Combined Composition Analysis and Projections first developed for the SWMP compares the recyclables rates that were achieved in 2023 and 2024 and the recyclables rates that were projected for these years from the 2021-2022 Biennial Update.

The 2023 actual total diversion rate is slightly lower than the projected diversion rate, with a difference of 3.61%, and the 2024 actual total diversion rate is slightly higher than the projected diversion rate, with a difference of 0.29%. However, in 2023 the actual diversion rates for Corrugated Cardboard and HHW are higher than the projected rates. In 2024, the actual diversion rate for Corrugated Cardboard and Yard Trimmings are higher than the projected rate. The projected diversion rates are estimates only and there will be variability between the actual diversion rates and the projections.

There was an increase in the total actual diversion rate between 2023 and 2024, showing that Rockland Green is continuing to make improvements in their diversion rates. In 2024, the actual diversion rates for Total Paper and

HHW decreased slightly from 2023, however the actual diversion rates for Total Plastics, Total Glass, and Total Organics in Metals and Total Plastics increased in 2024. The improvements in the total diversion rate demonstrates the success of Rockland Green's new MRF, the expansion of its food waste recycling programs, and its continual education efforts within the community. In addition, through the continuation of dual stream recycling in Rockland County, Rockland Green has been able to continue to sell their recyclables products due to limited contamination. Rockland Green will continue with their efforts in alignment with the SWMP to continue to increase recycling.

5.3 MUNICIPAL SOLID WASTE PROJECTIONS

The Municipal Solid Waste (MSW) projections for the remainder of the planning period (2025) have been updated in the attached Table 4-4: MSW Combined Composition Analysis and Projections of the SWMP. In addition, the MSW projections have been extended an additional 2 years through 2027 for the planning period extension. The 2021-2022 Biennial Update updated projections were based on maintaining the 2022 recyclables rates. The same basis was used to update the MSW projections for this compliance period. The updated projections for the remainder of the planning period and planning period extension were based on maintaining the 2024 recyclables rates.

The MSW projections for MRF recyclables (items highlighted in red in Table 4-4) have been updated based on the actual recycling rates achieved in 2024, completion of the new MRF in 2023, and market considerations including available resources, engrained community recycling habits and China's National Sword policy. It is estimated that Rockland Green will maintain their approximate 2024 recycling rates through the remainder of the planning period and planning period extension. A summary of the recycling rates is as follows:

- Paper – Maintaining the current recycling rate of 26.06%.
- Metals – Maintaining the current recycling rate of 35.28%.
- Plastics – Maintaining the current recycling rate of 8.15%.
- Glass – Maintaining the current recycling rate of 60.40%.

The MSW projections related to food scraps recycling efforts, which are highlighted in purple in Table 4-4, reflect the utilization of the Co-Composting Facility's permitted capacity of 20 tons per day with the organics ban in effect. Additionally, as described in Section 2.2.3 of this report, a residential organics drop-off program was implemented in the Towns of Orangetown, Clarkstown, and Haverstraw and will be expanded to additional Towns serviced by Rockland Green to utilize the permitted capacity at the Co-Composting Facility.

The projected annual increase for the recycling rates related to the food scraps recycling initiative were estimated to be:

- Food Scraps – Project 5,200 tons per year diverted based on the utilization of the permitted 20 tons/day food waste capacity at the Co-Composting Facility.

6.0 PLANNING PERIOD EXTENSION

As part of this 2023-2024 Biennial Update, Rockland Green is electing to extend its planning period by an additional 2 years through 2027. The planning period extension is being made in accordance with 6 NYCRR Section 366-5.2.

6.1 ALTERNATIVES EVALUATION AND SELECTED ALTERNATIVES AND PROGRAMS

Rockland Green will continue to evaluate alternatives that may enhance the existing SWMP during the additional 2-year planning period extension through 2027. Rockland Green alternatives for evaluation and implementation are focused on education, alternative waste processing and food waste recycling. Educating residents, businesses, and haulers is key to reducing waste and to allow for efficient operations of Rockland Green Facilities. Alternative waste processing is becoming increasingly important as airspace is consumed at landfills and landfill disposal capacity in the northeast continues to become more limited. As landfill disposal capacity decreases, tipping fees continue to increase. Waste disposal both inside and outside of the northeast are options, however transportation is costly. With increasing disposal costs, an alternative waste processing facility would be beneficial to reduce disposal needs and reliance upon landfills. Food waste represents approximately one third of waste disposed, with the highest potential for diversion from disposal at landfills. Diversion of organics will help conserve landfill capacity for other waste where disposal alternatives are not available. Organics, food in particular, can be diverted through donation to food pantries, use as animal feed, or processed through anaerobic digestors to produce compost and biogas for beneficial reuse. As expected, many of the alternatives overlap. For example, without education and outreach, waste and reuse programs will not become known to residents. Below is a summary of alternatives assessed or not assessed during the planning period extension per 366-2.5(a).

Alternatives to be evaluated by Rockland County over the planning period extension through 2027 include:

- (1) Waste reduction programs: No new program or enhancement
 - Rockland Green does not plan to implement new programs during the planning period extension but will continue to promote waste reduction through their existing programs working with food pantries and food banks to increase diversion of usable food, operate household hazardous waste events to reduce e-waste and paint waste, and promote product stewardship. Additional information on Rockland Green's existing programs and efforts for waste reduction is included under Section 2.0.
- (2) Reuse programs: No new program or enhancement
 - Rockland Green does not plan to implement new programs during the planning period extension but will continue to promote reuse through their existing programs providing information on reuse programs, hosting Repair Cafes, evaluate adding a material exchange component to the transfer stations and gauge interest in a Reuse Center. Additional information on Rockland Green's existing programs and efforts for reuse is included under Section 2.0.
- (3) Recyclables recovery programs for paper, metal, glass, plastic, and textiles: No new program or enhancement
 - Rockland Green does not plan to implement new programs during the planning period extension but will continue to promote recycling through their existing programs with education and outreach to encourage participation and reduce contamination. Additional information on Rockland Green's existing programs and efforts for recycling is included under Section 2.0.

- (4) Organics recovery programs for food scraps and yard trimmings: Addition of assessment for: Food Waste Recycling – Full Scale Program
 - Addition of Assessment for: Food Waste Recycling – Full Scale Program
 - Large Generators
 - Rockland Green will continue to contact large generators within Rockland County to determine interest and availability of organic material to send to a full-scale facility within Rockland County, as many large generators have existing diversion programs in place.
 - Rockland Green is working with the Rockland County Jail for implementing a food waste diversion program.
 - In addition to large generators, Rockland Green has worked to expand the residential drop-off program for Organics to increase food waste recycling through the existing capacity at the Co-Composting Facility. Rockland will continue to evaluate and identify where additional collection programs can increase the utilization of the existing facility capacity and feed a full-scale facility, if implemented.
 - Available Grants
 - Rockland Green has researched available grants for pre-processing equipment to screen organic waste feedstock to remove contaminants. Rockland Green applied for a grant for pre-processing equipment and is waiting on determination for the grant funding.
 - Existing Infrastructure Evaluation
 - Existing infrastructure will be evaluated for potential use for implementation of a full-scale program. If possible, existing infrastructure will be utilized to reduce costs for the facility. Some considerations for existing infrastructure to be evaluated will include space, potential capacity, utilities available, proximity to residents, zoning, traffic and site access.
 - Continuation of Existing Programs and Efforts
 - Rockland Green will continue to promote organics recovery programs for food scraps and yard trimmings through their existing programs including the expansion of the residential drop-off program, providing compost materials, working with Cornell Cooperative Extension and its existing education efforts using social media platforms, handouts and educational events to increase backyard composting, food preservation and provide information on where materials can be brought for recycling. Additional information on Rockland Green’s existing programs and efforts for organics recovery is included in Section 2.0.
 - Anaerobic Digestion: Anaerobic Digestors have been evaluated at the Rockland County Wastewater Treatment Plant. The addition of Anaerobic Digestors has been determined to be financially infeasible at this time. Rockland Green will continue to evaluate whether this option is financially feasible at the Rockland County Wastewater Treatment Plant or at other facilities in the future.
- (5) Programs to develop or improve local and regional markets for recyclables: No new program or enhancement
 - Rockland Green does not plan to implement new programs during the planning period extension but will continue to evaluate local and regional markets and plans to participate in a study for regionalization of services by a third party consultant in 2027. Additional information on Rockland Green’s existing efforts on markets is included in Section 2.0.

- (6) Enforcement programs: No new program or enhancement
 - Rockland Green does not plan to implement new programs during the planning period extension but will continue enforcement programs through the Feet on the Street program, completing inspections of incoming loads to transfer stations and coordinating with the RCDOH to identify entities for inspection. Additional information on Rockland Green's existing programs and efforts for enforcement is included in Section 2.0.
- (7) Incentive-based pricing: No new program or enhancement
 - Rockland Green does not plan to implement new programs during the planning period extension but will continue to assess the potential implementation of PAYT/SMART programs at Municipal Green Team meetings. Additional information on Rockland Green's existing efforts on incentive-based pricing is included in Section 2.0.
- (8) Education and outreach: No new program or enhancement
 - Rockland Green does not plan to implement new programs during the planning period extension but will continue their existing education and outreach efforts to increase their presence and provide information through social media platforms, provision of educational materials, participation in educational events, opening of the new education outreach center and operation of the Feet on the Street program. Additional information on Rockland Green's existing programs and efforts for education and outreach is included in Section 2.0.
- (9) Data collection and evaluation efforts: No new program or enhancement
 - Rockland Green does not plan to implement new programs during the planning period extension but will continue data collection and evaluation through its existing programs and systems. Additional information on Rockland Green's existing programs and efforts for data collection and evaluation is included in Section 2.0.
- (10) Local hauler licensing programs, including an assessment of laws preventing commingling or recyclables with waste: No new program or enhancement
 - Rockland Green does not plan to implement new programs during the planning period extension but will continue to review regulations and laws approved by state or federal agencies on a routine basis and the need for implementing changes to current operations or laws will be assessed each year. Additional information on laws and regulations is included in Section 2.0.
- (11) Flow control and districting potential: No new program or enhancement
 - Rockland Green does not plan to implement new programs during the planning period extension but will continue to meet with RCDOH to review Flow Control enforcement. Additional information on Rockland Green's existing programs and efforts for Flow Control is included in Section 2.0.
- (12) C&D debris reduction, including deconstruction, reuse and recovery programs: No new program or enhancement
 - Rockland Green does not plan to implement new programs during the planning period extension but will continue to evaluate C&D reduction through its existing efforts to coordinate for deconstruction and plans to perform a feasibility study for alternative C&D handling, recycling, and disposal methods. Additional information on Rockland Green's existing programs and efforts for C&D reduction is included in Section 2.0.
- (13) Private sector management and coordination opportunities: No new program or enhancement
 - Rockland Green does not plan to implement new programs during the planning period extension but will continue to coordinate and partner with the private sector when beneficial to help support its solid waste management program, e.g. working with Whirlwind Creative on the design of the education outreach center. Additional information on Rockland Green's existing private sector partnerships is included in Section 2.0.

- (14) Management of waste through thermal technologies: Addition of evaluation for: Alternative Waste Processing
 - Rockland Green issued an RFEI in January 2020 on alternative waste treatment techniques, receiving 15 responses worldwide. In May 2020 Rockland Green held virtual interviews to discuss the alternate techniques. Due to COVID-19 efforts were put on hold after interviews were completed.
 - Rockland Green resent letters in March 2023 to those that provided responses to the RFEI in 2020. Rockland Green will also work with RIT to evaluate other technologies that may be viable since the RFEI was issued in 2020. Rockland Green is evaluating the feasibility, regulation and siting requirements for the alternative waste treatment techniques included in the responses.
 - Rockland Green will be requesting a meeting with NYSDEC to discuss alternative waste treatment techniques that NYSDEC deems acceptable and are comfortable with as alternate methods.
 - Rockland Green is particularly interested in alternative treatment technologies. Potential locations within Rockland County for siting a facility were evaluated for available space, proximity to residents, infrastructure requirements, traffic and site access.
 - Based on the responses to the RFEI provided, approximately 6 to 12 acres would be required for an alternative waste processing facility. Rockland Green is remaining technology agnostic while completing siting evaluation for the facility.
 - A GIS review study of Rockland County was completed to identify potential locations. Nine (9) potential locations were identified. Each of the nine (9) sites identified will be inspected, two (2) of which will be selected and identified for further evaluation.
 - Rockland Green will continue to discuss alternative methods with NYSDEC moving forward, at this time Rockland Green is interested in evaluating a waste to energy facility as a potential alternative that is commercially viable.
 - Rockland Green will continue to attend conferences and seminars in order to evaluate alternative technologies for waste treatment and transportation methods for waste hauling.
- (15) Waste Disposal options: No new program or enhancement
 - With the long-term contract in place for waste disposal via long haul trucking to landfills in New York State, Rockland Green does not plan to implement new programs during the planning period extension but will continue to evaluate waste disposal options. Additional information on Rockland Green's existing efforts on evaluation of waste disposal options is included in Section 2.0.

In accordance with 6 NYCRR 366-2.5(b), assessments of the administrative, technical, and jurisdictional impacts for each alternative evaluated are included below as applicable.

The following alternatives do not have proposed changes or new tasks to be implemented during the planning period extension in addition to the existing Rockland Green programs and efforts; therefore, no assessment for administrative, technical, or jurisdictional impacts are required to be completed.

- (1) Waste reduction programs
- (2) Reuse programs
- (3) Recyclables recovery programs for paper, metal, glass, plastic, and textiles
- (5) Programs to develop or improve local and regional markets for recyclables
- (6) Enforcement programs
- (7) Incentive-based pricing
- (8) Education and outreach
- (9) Data collection and evaluation efforts

- (10) Local hauler licensing programs, including as assessment of laws preventing commingling or recyclables with waste
- (11) Flow control and districting potential
- (12) C&D debris reduction, including deconstruction, reuse and recovery programs
- (13) Private sector management and coordination opportunities
- (15) Waste Disposal options

The following have been identified as alternatives that may enhance the existing solid waste management program, in addition to the existing Rockland Green programs and efforts. A further assessment of these items will be completed during the assessment and feasibility analysis of the alternatives.

- (4) Organics recovery programs for food scraps and yard trimmings: Food Waste Recycling – Full Scale Program
 - Administrative/Technical Impacts
 - A full-scale Food Waste Recycling Program would divert organic waste intended for landfill disposal. This would allow Rockland Green to divert and process more organic waste to create a finished product for beneficial reuse. This would result in more revenue for Rockland Green through the sale of finished products and reduction of landfill disposal costs as well as create additional employment opportunities, creating a positive economic impact for the organization and Rockland County as a whole. The size of the facility will be considered during evaluation, to be based upon the available organics generated and required to be diverted by legislation if an organics facility is available. The net social benefit of food waste recycling would be similar to that listed above for alternative waste processing. Additionally, Rockland Green is evaluating the use of existing infrastructure for the implantation of a full-scale program. The use of existing infrastructure would create an economic benefit to Rockland Green by reducing the cost of this program, in addition to reducing land development needed for new infrastructure.
 - Jurisdictional Impacts
 - This alternative would focus on and affect waste generated, managed, and/or disposed of within Rockland County. Neighboring units and jurisdictions may be assessed for interest and availability may be assessed later. Food waste recycling would divert organic waste intended for landfill disposal. The quantity of organic waste at landfills would decrease. Similarly to anaerobic digestion, this would result in less greenhouse gas emissions produced from hauler trucks and landfill gas emissions produced from the degradation of organic waste at landfills.
- (14) Management of waste through thermal treatment technologies:
 - Administrative/Technical Impacts
 - Through the use of alternative waste processing, the overall quantity of waste that is sent to landfills would be reduced. This would result in a longer operating life for landfills. The size, requirements and cost for the facility will be considered during evaluation of the alternative. Although the implementation of alternative waste treatment technologies would require additional land space, infrastructure, and energy requirements for Rockland Green, it is anticipated to result in an economic and social benefit to Rockland Green and Rockland County. The ability to receive and process waste at a potentially lower cost than landfilling and allowing for the creation of employment opportunities for the operation of the new facility would provide an economic benefit. Alternative waste processing could also potentially lead to production of renewable energy or another marketable product offtake from the diverted waste. The net social benefit would be through creating a more robust, environmentally orientated waste management system for Rockland County. Additionally, by increasing landfill operating life, the need for land

development to expand existing landfills or create new landfills will be reduced. Also, through decreasing the overall quantity of waste that is sent to landfills, the number of trucks needed to transport Rockland Green's waste will be reduced. This would result in a net reduction of greenhouse gas emissions for Rockland Green's operations.

- Jurisdictional Impacts
 - Rockland Green manages the waste materials generated, managed, and/or disposed of within the boundaries of Rockland County and would initially focus on alternative waste processing for waste within the County. Neighboring planning units and jurisdictions may be assessed for interest and availability. Alternative waste processing methods would lead to more disposal options for waste, which is becoming more necessary as landfill disposal capacity in the northeast continues to become more limited. Additional waste disposal options could lead to a more robust and flexible waste management system that will benefit residents and institutions of Rockland County. Environmental justice impacts will be considered during evaluation of the alternative.

Rockland Green will continue with the implementation of alternative programs as part of its SWMP. A summary of the selected alternatives in addition to existing programs that Rockland Green plans to implement over the planning period extension through 2027 to enhance Rockland Green's existing SWMP is included below in accordance with 6 NYCRR 366-2.5(c).

- Assessment for: Food Waste Recycling – Full Scale Program
 - An assessment for a full-scale food waste recycling program was selected as an addition to Rockland Green's SWMP to increase organics recovery. The Food Donation and Good Scraps Recycling Law requiring large food waste generators to donate, if they are located near recycling facilities, could help support a full-scale program. The organics residential drop-off program established by Rockland Green has also received positive feedback from residents and the program has been expanded for additional drop-off locations to increase residential participation.
 - A full-scale food waste recycling program has the potential to reduce waste through organics recovery and increase participation of residents and large generators located near the facility. The qualitative and quantitative impacts and benefits will be evaluated by Rockland Green as part of the assessment of a full-scale program to determine if it would be feasible, economically viable and beneficial.
 - The administrative, contractual and financial requirements required for implementation of the full-scale program will be evaluated by Rockland Green as part of the assessment.
 - It is not anticipated that there will be a need for laws, ordinances or regulations to implement a full-scale program, but this will be further investigated by Rockland Green as part of the assessment to determine if it would be feasible.
- Evaluation for: Alternative Waste Processing
 - Evaluation of alternative waste processing was selected as an addition to Rockland Green's SWMP to address finite landfill capacity available for disposal, which is anticipated to continue to decrease in New York State, and assess whether alternative options are feasible.
 - Alternative waste processing has the potential to reduce waste, trucking and has the opportunity for regional benefits. As part of the evaluation for alternative waste processing, Rockland Green will assess the qualitative and quantitative impacts and benefits to determine if it would be feasible, economically viable and beneficial.
 - There will be administrative, contractual and financial requirements for implementation of alternative waste processing, the needs of these will be assessed by Rockland Green as part of the evaluation.

- The need for laws, ordinances and regulations to implement alternative waste processing will be assessed by Rockland Green as part of the evaluation.

6.2 IMPLEMENTATION SCHEDULE

The implementation schedules included in Section 3 have been extended an additional 2 years past the approved SWMP planning period (approved through 2023, with the first 2-year extension approved through 2025) through 2027 to illustrate a timeline for tasks being performed and tasks for potential improvements and additional program elements during the additional 2 years for the planning period extension. The extended implementation schedules include the ongoing programs and alternatives discussed in Section 6.1.

6.3 MUNICIPAL SOLID WASTE PROJECTIONS

The MSW projections discussed in Section 5 have been extended an additional 2 years past the approved SWMP planning period (approved through 2023, with the first 2-year extension approved through 2025) through 2027. The updated MSW projections are included in the attached Table 4-4: MSW Combined Composition Analysis and Projections of the SWMP. The MSW projection through the end of the planning period extension (2027) are discussed in Section 5.

7.0 LIMITATIONS

The work product included in the attached was undertaken in full conformity with generally accepted professional consulting principles and practices and to the fullest extent as allowed by law we expressly disclaim all warranties, express or implied, including warranties of merchantability or fitness for a particular purpose. The work product was completed in full conformity with the contract with our client and this document is solely for the use and reliance of our client (unless previously agreed upon that a third party could rely on the work product) and any reliance on this work product by an unapproved outside party is at such party's risk.

The work product herein (including opinions, conclusions, suggestions, etc.) was prepared based on the situations and circumstances as found at the time, location, scope and goal of our performance and thus should be relied upon and used by our client recognizing these considerations and limitations. Cornerstone Engineering and Geology, PLLC shall not be liable for the consequences of any change in environmental standards, practices, or regulations following the completion of our work and there is no warrant to the veracity of information provided by third parties, or the partial utilization of this work product.

TABLES

Table 4-1
Current Tipping Fees

Rockland County Solid Waste Management Plan, 2023-2024 Biennial Update

Transfer Station	
Municipal Garbage / Construction Debris	\$99.00 per ton
MSW and C&D	\$124.00 per ton
Out of County / Out of State MSW and C&D	\$124.00 per ton
Scrap Metal	No Charge
Car Tires (no rims)	\$6.00 each
Truck Tires (no rims)	\$20.00 each
Bulk Tires (no rims)	\$400.00 per ton
Cocomposting Facility	
Manure	\$79.00 per ton
Clean Unprocessed Wood Waste*	\$25.00 per ton
Clean Chipped Wood Waste*	No Charge
Wood Pallets*	\$10.00 per ton
Brush	\$57.00 per ton
Food Scraps**	\$54.00 per ton
Concrete Crushing Facility	
Asphalt	\$23.00 per ton
Concrete	\$23.00 per ton
Concrete w/ PSI of 3,500 or greater	\$25.00 per ton surcharge
Oversize Charges (per load)	
Rate 1 (Less than 10 tons)	plus \$30.00 per load
Rate 2 (Between 10 and 15 tons)	plus \$60.00 per load
Rate 3 (15 tons and Over)	plus \$200.00 per load
Yard Waste Facility – Clarkstown***	
Leaves	\$51.00 per ton
Brush/Wood Chips	\$57.00 per ton
Grass	\$70.00 per ton
Mixed Yard Waste	\$105.00 per ton
Tree Stumps	\$150.00 per ton

*Clean Wood - uncoated, untreated, unpainted, and unstained wood or lumber.

**Fee only for commercial haulers, no fee for municipal trucks.

***Yard Waste brought to the facility by County residents is accepted free of charge in non commercial plated vehicles only.

Green Highlights: Adjusted to Account for Tonnage Not Captured by Rockland Green Red Highlights: Impacted by Implementing MRF Throughput Initiative Purple Highlights: Impacted by Comm. Food Waste Recycling Initiative

Table 4-4
Municipal Solid Waste (MSW) Combined Composition Analysis and Projections
Rockland County 2023-2024 Biennial Update

Material	2023 Tons Generated	% of Total	2024 Tons Generated	% of Total	2023 (Actual)		2023 (Projected From 2021-2022 Biennial Update)		2024 (Actual)		2024 (Projected From 2021-2022 Biennial Update)		2025		
					Tons Diverted	% Diverted	Tons Diverted	% Diverted	Tons Diverted	% Diverted	Tons Diverted	% Diverted	2025 Tons Generated	Tons Diverted	% Diverted
Newspaper	11,535	3.54%	11,567	3.54%	2,001	26.02%	4,273	36.98%	1,823	15.76%	4,282	36.98%	12,074	1,903	15.76%
Corrugated Cardboard	29,051	8.91%	29,131	8.91%	16,557	56.99%	13,755	46.11%	19,714	67.67%	13,784	46.11%	30,408	20,578	67.67%
Other Recyclable Paper															
Paperboard	8,894	2.48%	8,116	2.48%	1,400	17.30%	1,993	23.98%	850	10.48%	1,997	23.98%	8,472	888	10.48%
Office Paper	9,572	2.93%	9,598	2.93%	1,521	15.89%	2,165	22.03%	924	9.62%	2,169	22.03%	10,019	964	9.62%
Junk Mail	7,852	2.41%	7,873	2.41%	1,400	17.83%	1,993	24.72%	850	10.80%	1,997	24.72%	8,219	888	10.80%
Other Commercial Printing	7,586	2.33%	7,607	2.33%	1,581	20.84%	2,251	28.90%	969	12.63%	2,256	28.90%	7,941	1,003	12.63%
Magazines	3,729	1.14%	3,740	1.14%	614	16.47%	875	22.84%	373	9.98%	876	22.84%	3,903	390	9.98%
Books	1,724	0.53%	1,729	0.53%	914	53.00%	938	53.00%	916	53.00%	940	53.00%	1,805	956	53.00%
Bags	1,218	0.37%	1,222	0.37%	499	41.00%	513	41.00%	501	41.00%	514	41.00%	1,275	523	41.00%
Phone Books	1,091	0.33%	1,094	0.33%	191	17.53%	272	24.31%	116	10.62%	273	24.31%	1,142	121	10.62%
Poly-Coated	830	0.25%	832	0.25%	0	0.00%	0	0.00%	0	0.00%	0	0.00%	869	0	0.00%
Other Recyclable Paper (Total)	41,696	12.78%	41,811	12.78%	8,121	19.48%	11,000	25.69%	5,491	13.13%	11,023	25.69%	43,644	5,732	13.13%
Other Compostible Paper	21,133	6.48%	21,191	6.48%	0	0.00%	0	0.00%	0	0.00%	0	0.00%	22,120	0	0.00%
Total Paper	103,415	31.71%	103,700	31.71%	27,679	26.77%	29,028	27.34%	27,028	26.06%	29,089	27.34%	108,246	28,213	26.06%
Ferrous/Aluminum Containers						Base MRF Tonnage	30,746				35,123				31,152
Ferrous Containers	3,238	0.99%	3,246	0.99%	846	26.13%	1,194	35.91%	1,018	31.36%	1,196	35.91%	3,389	1,063	31.36%
Aluminum Containers	1,508	0.46%	1,512	0.46%	890	59.01%	955	61.64%	914	60.41%	957	61.64%	1,574	954	60.41%
Ferrous/Aluminum Containers (Total)	4,746	1.46%	4,759	1.46%	1,736	36.58%	2,148	44.09%	1,932	40.59%	2,153	44.09%	4,963	2,017	40.59%
Other Ferrous Metals	16,276	4.99%	16,321	4.99%	4,997	30.70%	5,130	30.70%	5,010	30.70%	5,141	30.70%	17,036	5,230	30.70%
Other Non-Ferrous Metals															
Other aluminum	801	0.25%	803	0.25%	35	4.40%	50	6.05%	42	5.28%	50	6.05%	838	44	5.28%
Automotive batteries	1,607	0.49%	1,612	0.49%	1,607	100.00%	1,650	100.00%	1,612	100.00%	1,654	100.00%	1,682	1,682	100.00%
Other non-aluminum	1,099	0.34%	1,102	0.34%	82	7.42%	84	7.42%	82	7.42%	84	7.42%	1,150	85	7.42%
Other Non-Ferrous Metals (Total)	3,507	1.08%	3,517	1.08%	1,724	49.16%	1,784	49.53%	1,736	49.36%	1,787	49.53%	3,671	1,812	49.36%
Total Metals	24,529	7.52%	24,596	7.52%	8,457	34.48%	9,062	35.98%	8,678	35.28%	9,081	35.98%	25,674	9,588	35.28%
PEI Containers	3,563	1.09%	3,573	1.09%	2,065	57.94%	2,513	68.68%	2,275	63.68%	2,518	68.68%	3,730	2,375	63.68%
HDPE Containers	2,672	0.82%	2,679	0.82%	987	36.94%	1,393	50.78%	1,188	44.34%	1,396	50.78%	2,796	1,240	44.34%
Other Plastic (3-7) Containers	652	0.20%	654	0.20%	183	28.10%	259	38.62%	221	33.72%	259	38.62%	683	230	33.72%
Film Plastic	18,486	5.67%	18,537	5.67%	0	0.00%	0	0.00%	0	0.00%	0	0.00%	19,349	0	0.00%
Other Plastic															
Durable	9,945	3.05%	9,972	3.05%	0	0.00%	0	0.00%	0	0.00%	0	0.00%	10,410	0	0.00%
Non-Durable	5,614	1.72%	5,630	1.72%	0	0.00%	0	0.00%	0	0.00%	0	0.00%	5,870	0	0.00%
Packaging	4,154	1.27%	4,165	1.27%	0	0.00%	0	0.00%	0	0.00%	0	0.00%	4,348	0	0.00%
Other Plastic (Total)	19,713	6.04%	19,767	6.04%	0	0.00%	0	0.00%	0	0.00%	0	0.00%	20,634	0	0.00%
Total Plastics	45,006	13.82%	45,210	13.82%	3,235	7.17%	4,164	9.09%	3,684	8.15%	4,173	9.09%	47,192	3,845	8.15%
Glass Containers	12,706	3.90%	12,741	3.90%	7,654	60.24%	9,214	70.63%	8,383	65.79%	9,234	70.63%	13,239	8,750	65.79%
Other Glass	1,135	0.35%	1,138	0.35%	0	0.00%	0	0.00%	0	0.00%	0	0.00%	1,188	0	0.00%
Total Glass	13,841	4.24%	13,879	4.24%	7,654	55.30%	9,214	64.84%	8,383	60.40%	9,234	64.84%	14,427	8,750	60.40%
Food Scraps	50,392	15.45%	50,531	15.45%	1,946	3.86%	5,200	10.05%	2,011	3.98%	5,200	10.03%	52,744	5,200	9.86%
Yard Trimmings	37,979	11.64%	38,083	11.64%	36,688	96.60%	38,995	100.00%	48,885	128.36%	39,077	100.00%	39,753	39,753	100.00%
Total Organics	88,371	27.09%	88,614	27.09%	38,633	43.72%	44,195	48.71%	50,896	57.44%	44,277	48.70%	92,499	44,953	48.60%
Clothing, Footwear, Towels, Sheets	12,484	3.83%	12,518	3.83%	0	0.00%	0	0.00%	0	0.00%	0	0.00%	13,067	0	0.00%
Carpet	4,944	1.52%	4,957	1.52%	0	0.00%	0	0.00%	0	0.00%	0	0.00%	5,175	0	0.00%
Total Textiles	17,428	5.34%	17,476	5.34%	0	0.00%	0	0.00%	0	0.00%	0	0.00%	18,242	0	0.00%
Total Wood	7,916	2.43%	7,937	2.43%	0	0.00%	0	0.00%	0	0.00%	0	0.00%	8,285	0	0.00%
DIY Construction & Renovation Materials	6,371	1.95%	6,389	1.95%	0	0.00%	0	0.00%	0	0.00%	0	0.00%	6,660	0	0.00%
Other Durables	3,731	1.14%	3,742	1.14%	0	0.00%	0	0.00%	0	0.00%	0	0.00%	3,906	0	0.00%
Diapers	5,003	1.53%	5,016	1.53%	0	0.00%	0	0.00%	0	0.00%	0	0.00%	5,236	0	0.00%
Electronics ²	4,763	1.46%	4,776	1.46%	283	5.94%	4,157	85.00%	265	5.54%	4,166	85.00%	4,986	4,238	85.00%
Tires	4,352	1.33%	4,364	1.33%	1,710	39.30%	1,756	39.30%	1,715	39.30%	1,760	39.30%	4,555	1,790	39.30%
HHW	1,831	0.56%	1,834	0.56%	0	0.00%	511	48.31%	0	0.00%	513	48.31%	1,879	0	0.00%
Fines	326	0.10%	327	0.10%	0	0.00%	0	0.00%	0	0.00%	0	0.00%	341	0	0.00%
Total Miscellaneous	25,576	7.84%	25,648	7.84%	1,993	7.79%	6,425	24.46%	1,980	7.72%	6,438	24.46%	26,773	6,023	22.52%
Total	326,161	100.00%	327,061	100.00%	87,652	26.87%	102,087	30.48%	100,649	30.77%	102,291	30.48%	341,398	100,848	29.54%
Population (Actual & Projected)	343,310		343,310		343,310		340,717		348,144		342,421		349,885		
MSW Generated (tons)	326,161		327,061		326,161		334,886		327,061		335,592		341,398		
MSW Diverted (tons)					87,652		102,087		100,649		102,291		100,848		
MSW Disposed (tons)					238,509		232,799		226,412		233,300		240,550		
Per Capita MSW Generated (lbs)	1,900		1,879		1,900		1,966		1,879		1,960		1,951		
Per Capita MSW Diverted (lbs)					511		599		578		597		576		
Per Capita/year MSW Disposed (lbs)					1,389		1,367		1,301		1,363		1,375		
Per Capita/day MSW Disposed (lbs)					3.8		3.7		3.6		3.7		3.8		

Table 5-3
2023 Solid Waste Quantities Based on the 2023
Annual Planning Unit Recycling Reports
 Rockland County Solid Waste Management Plan
 2023-2024 Biennial Update

Material	Reported Tonnages
MSW Generated	322,144.88
MSW Disposed	251,026.43
MSW Recycled	71,118.45
Mixed Paper	10,071.18
Cardboard	16,557.46
Mixed Containers	7,049.99
Yard Waste	36,687.79
HHW	0.00
Metals	517.84
Tires	38.50
Food Waste	195.69
Solid Waste Disposed	363,894.15
MSW	251,026.43
C&D	112,138.68
HHW	729.04
Biosolids	0.00
Industrial	0.00
Solid Waste Recycled	136,205.06
MSW	71,118.45
Concrete	46,922.21
Asphalt	11,976.36
Biosolids	6,188.04
Industrial	0.00

Notes:

1. Data from the 2023 Annual Planning Unit Recycling Reports.
2. Recycled tonnage based on recovered tonnage from 2023 Annual Planning Unit Recycling Reports.
3. Total Solid Waste Disposed includes MSW, C&D, and HHW. HHW includes E-waste.
4. Compost distributed by the Co-Composting Facility is reported in cubic yards. A density of 1,000 lbs/cy for compost is used to calculate the tonnage distributed.
5. Compost is composed of yard waste, food waste, and biosolids.

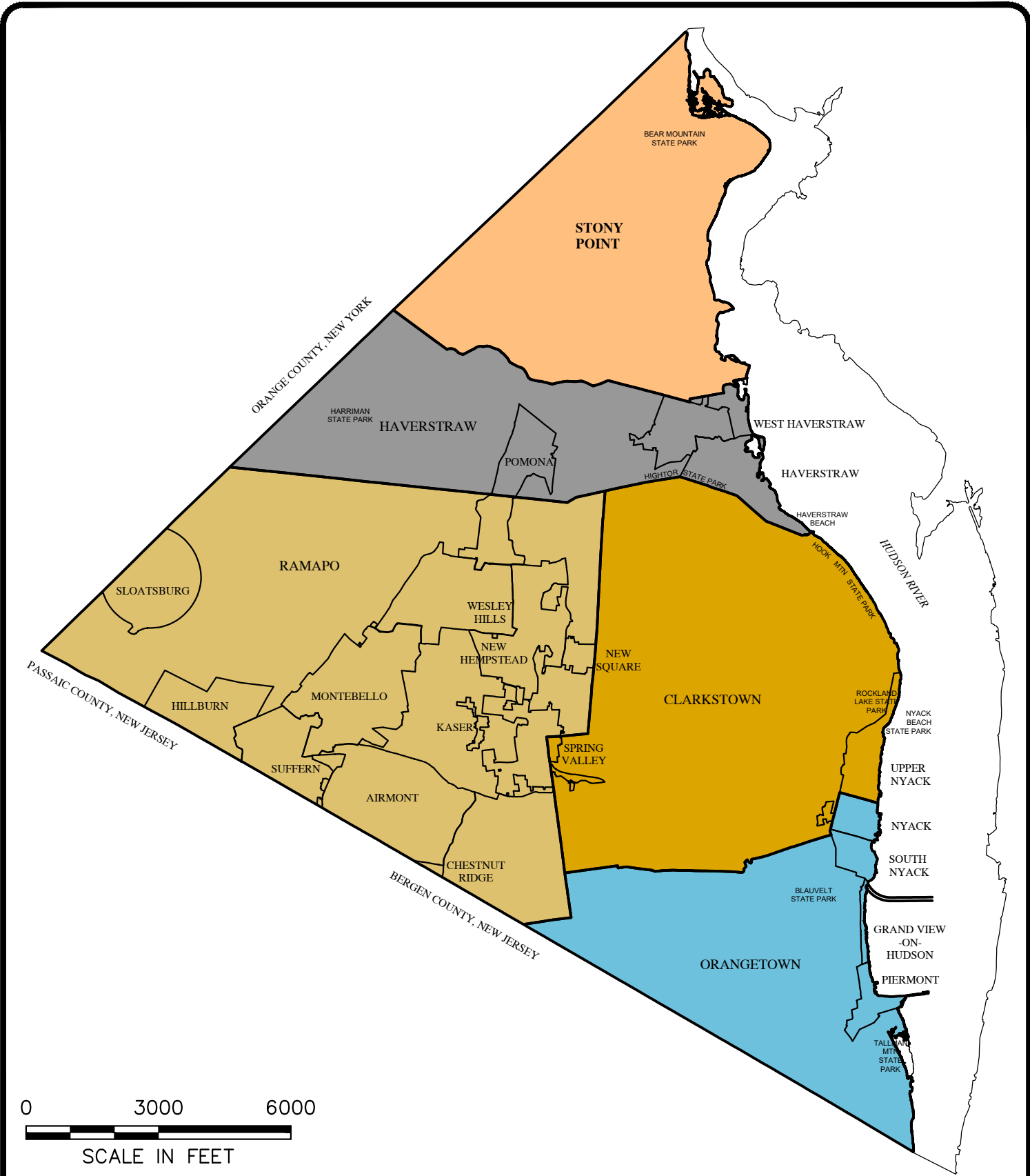
Table 5-3
2024 Solid Waste Quantities Based on the 2024
Annual Planning Unit Recycling Reports
Rockland County Solid Waste Management Plan
2023-2024 Biennial Update

Material	Reported Tonnages
MSW Generated	338,355.15
MSW Disposed	254,119.39
MSW Recycled	84,235.76
Mixed Paper	6,117.46
Cardboard	19,713.89
Mixed Containers	8,484.20
Yard Waste	48,885.21
HHW	0.00
Metals	763.03
Tires	35.47
Food Waste	236.50
Solid Waste Disposed	361,528.56
MSW	254,119.39
C&D	106,705.13
HHW	704.04
Biosolids	0.00
Industrial	0.00
Solid Waste Recycled	135,708.74
MSW	84,235.76
Concrete	35,552.50
Asphalt	9,844.78
Biosolids	6,075.70
Industrial	0.00

Notes:

1. Data from the 2024 Annual Planning Unit Recycling Reports.
2. Recycled tonnage based on recovered tonnage from 2024 Annual Planning Unit Recycling Reports.
3. Total Solid Waste Disposed includes MSW, C&D, and HHW. HHW includes E-waste.
4. Compost distributed by the Co-Composting Facility is reported in cubic yards. A density of 1,000 lbs/cy for compost is used to calculate the tonnage distributed.
5. Compost is composed of yard waste, food waste, and biosolids.

FIGURES



This drawing represents intellectual property of Cornerstone Engineering and Land Surveying, PLLC. Any modification to the original by other than Cornerstone Engineering and Land Surveying, PLLC personnel violates its original purpose and as such is rendered void. Cornerstone Engineering and Land Surveying, PLLC will not be held liable for any changes made to this document without express written consent of the originator.

Unauthorized alteration or addition to this plan bearing a licensed professional's seal is a violation of Section 7209, Sub-Division 2, of the New York Education Law. Only copies from the original of this plan marked with an original professional's seal shall be considered to be valid true copies.



cornerstone
 PLLC
 PREPARED BY:
 CORNERSTONE ENGINEERING AND GEOLOGY, PLLC
ALL PROFESSIONAL ENGINEERING WORK IS PERFORMED BY DULY LICENSED PROFESSIONAL ENGINEERS UNDER THE APPROPRIATE STATE REGISTERED PROFESSIONAL ENTITY.

**ROCKLAND COUNTY SWMP
 2023-2024 BIENNIAL UPDATE**

**TOWNS & VILLAGES
 IN ROCKLAND COUNTY**

FIGURE NO.
1-1
 PROJECT NO.
 4253493

APPENDIX A

ANNUAL 2023 & 2024 PLANNING UNIT RECYCLING REPORTS

Table A-1
2023 Solid Waste and Recyclables Destination Facilities

Rockland County Solid Waste Management Plan 2023-2024 Biennial Update

Material	Disposal Facility Name	Disposal Facility Address	Amount Sent to Disposal Facility (Tons)	Total	Unit
Solid Waste					
MSW & C&D (See Note 1)	Chemung Landfill	1690 Lake St. Elmira, NY 14901	5,077.16	363,165.11	Tons
	Hyland Landfill/Facility Associates	6653 Herdman Road, Angelica, NY 14709	170,444.01		
	Ontario County Landfill	1879 NY-5, Stanley, NY 14561	187,624.15		
	Balcones Recycling Inc	1 Linden Ave. East, Jersey City, NJ 07305	17.08		
	Triumvirate Environmental	42-14 19th Ave., Astoria, NY 11105	2.71		
HHW	Clean Harbors Chattanooga, LLC	3300 Cummings Road, Chattanooga, TN 37419	28.14	446.22	Tons
	Safety-Kleen Systems, Inc.	167 Mill Street, Cranston, RI 02910	63.06		
	Clean Harbors El Dorado, LLC	309 American Circle, El Dorado, AR 71730	50.19		
	Clean Harbors Reidsville, LLC	208 Watlington Industrial Drive, Reidsville, NC 27320	23.27		
	Spring Grove Resource Recovery, Inc.	4879 Spring Grove Avenue, Cincinnati, OH 45232	66.13		
	Safety-Kleen Systems, Inc.	3700 La Grange Road, Smithfield, KY 40068	57.40		
	Veolia ES Technical Solutions	5736 W Jefferson Street, Phoenix, AZ 85043	0.08		
	Clean Harbors of Connecticut, Inc.	51 Broderick Road, Bristol, CT 06010	157.97		
E-Waste	ECOVanta	2209 South 58th Street, Philadelphia, PA 19143	282.82	282.82	Tons
Recyclables					
Cardboard	Balcones Recycling Inc	1 Linden Ave. East, Jersey City, NJ 07305	10,191.19	16,557.46	Tons
	IWS-Action Environmental	920 132nd St., Bronx, NY 10454	6,366.27		
Mixed Paper	Balcones Recycling Inc	1 Linden Ave. East, Jersey City, NJ 07305	3,354.62	10,071.18	Tons
	IWS-Action Environmental	920 132nd St., Bronx, NY 10454	6,716.56		
Mixed Containers	IWS-Action Environmental	920 132nd St., Bronx, NY 10454	4,767.03	7,049.99	Tons
	Urban Mining	105A Breault Rd., Beacon Falls, CT, 06403	1,026.37		
	Balcones Recycling Inc	1 Linden Ave. East, Jersey City, NJ 07305	1,256.59		
Metals	Teplitz, Inc.	108 W. Nyack Road, Nanuet, NY 10954	517.84	517.84	Tons
Tires	FC Used Tires, dba Ben T.	3401 Tremley Point Road, Unit #6, Linden, NJ 07036	38.50	38.50	Tons
Concrete	O'Sullivan Equipment	201 Western Highway, West Nyack, NY 10994	46,922.21	46,922.21	Tons
Asphalt	O'Sullivan Equipment	201 Western Highway, West Nyack, NY 10994	11,976.36	11,976.36	Tons
Compost	See Note 2	See Note 2	31,506.52	31,506.52	Tons
	See Note 2	See Note 2	23,130.00	23,130.00	Cubic Yards

Notes:

1. Rockland Green does not separate inbound MSW and C&D material at its facilities. All acceptable MSW and C&D material is blended and papered as Municipal Solid Waste.
2. The operations of the Co-Composting Facility are contracted out to Denali Water Solutions, who are responsible for processing the material and distribution of finished product for beneficial reuse. As Rockland Green sends yard waste, food waste and biosolids to the Co-Composting Facility, the Co-Composting Facility is considered the receiving facility for these materials.

Table A-1
2024 Solid Waste and Recyclables Destination Facilities
 Rockland County Solid Waste Management Plan 2023-2024 Biennial Update

Material	Disposal Facility Name	Disposal Facility Address	Amount Sent to Disposal Facility (Tons)	Total	Units
Solid Waste					
MSW & C&D (See Note 1)	Chemung Landfill	1690 Lake St. Elmira, NY 14901	7,545.95	360,824.52	Tons
	Hyland Landfill/Facility Associates	6653 Herdman Road, Angelica, NY 14709	161,493.56		
	Ontario County Landfill	1879 NY-5, Stanley, NY 14561	188,567.02		
	Win Waste Innovations	5 John Walsh Blvd., Peekskill, NY 10565	250.70		
	Veolia Environmental Services	1 Eden Ln, Flanders, NJ 07836	0.16		
	Balcones Recycling Inc	1 Linden Ave. East, Jersey City, NJ 07305	2,967.13		
HHW	Clean Harbors Chattanooga, LLC	3300 Cummings Road, Chattanooga, TN 37419	34.13	439.29	Tons
	Safety-Kleen Systems, Inc.	167 Mill Street, Cranston, RI 02910	75.15		
	Clean Harbors Deer Park, LLC	2027 Independence Parkway South, La Porte, TX 77571	0.05		
	Clean Harbors El Dorado, LLC	309 American Circle, El Dorado, AR 71730	103.95		
	Clean Harbors Reidsville, LLC	208 Watlington Industrial Drive, Reidsville, NC 27320	2.20		
	Spring Grove Resource Recovery, Inc.	4879 Spring Grove Avenue, Cincinnati, OH 45232	21.57		
	Safety-Kleen Systems, Inc.	3700 La Grange Road, Smithfield, KY 40068	60.15		
Clean Harbors of Connecticut, Inc.	51 Broderick Road, Bristol, CT 06010	142.10			
E-Waste	ECOVanta	2209 South 58th Street, Philadelphia, PA 19143	264.75	264.75	Tons
Recyclables					
Cardboard	Millenium Paper Recycling	25 N Airmont Rd, Suffern, NY 10901	805.41	19,713.89	Tons
	Balcones Recycling Inc	1 Linden Ave. East, Jersey City, NJ 07305	18,908.48		
Mixed Paper	Balcones Recycling Inc	1 Linden Ave. East, Jersey City, NJ 07305	6,117.46	6,117.46	Tons
Mixed Containers	Balcones Recycling Inc	1 Linden Ave. East, Jersey City, NJ 07305	2,840.72	8,484.20	Tons
	Rockland County Highway Department	26 Scotland Hill Rd., Chestnut Ridge, NY 10977	1,921.29		
	Clarkstown Concrete and Asphalt Crushing Facility	166 S Route 303, West Nyack, NY 10994	99.26		
	Orangtown Highway Department	119 NY 303, Orangeburg, NY 10962	56.66		
	Urban Mining	105A Breault Rd., Beacon Falls, CT 06403	2,567.18		
	SMR Jersey City Glass	1 Linden Ave. East, Jersey City, NJ 07305	999.09		
Metals	Teplitz, Inc.	108 W. Nyack Road, Nanuet, NY 10954	728.35	763.03	Tons
	Balcones Recycling Inc	1 Linden Ave. East, Jersey City, NJ 07305	31.00		
	SMR Jersey City Glass	1 Linden Ave. East, Jersey City, NJ 07305	3.68		
Tires	FC Used Tires, dba Ben T.	3401 Tremley Point Road, Unit #6, Linden, NJ 07036	35.47	35.47	Tons
Concrete	O'Sullivan Equipment	201 Western Highway, West Nyack, NY 10994	35,552.50	35,552.50	Tons
Asphalt	O'Sullivan Equipment	201 Western Highway, West Nyack, NY 10994	9,844.78	9,844.78	Tons
Compost	See Note 2	See Note 2	43,408.41	43,408.41	Tons
	See Note 2	See Note 2	23,578.00	23,578.00	Cubic Yards

Notes:

1. Rockland Green does not separate inbound MSW and C&D material at its facilities. All acceptable MSW and C&D material is blended and papered as Municipal Solid Waste.
2. The operations of the Co-Composting Facility are contracted out to Denali Water Solutions, who are responsible for processing the material and distribution of finished product for beneficial reuse. As Rockland Green sends yard waste, food waste and biosolids to the Co-Composting Facility, the Co-Composting Facility is considered the receiving facility for these materials.

APPENDIX B

ROCKLAND GREEN HILLBURN COMPLEX PERMIT



June 2, 2025

Gerard M. Damiani, Jr.
Rockland Green
172 Main Street
Nanuet, NY 10954
gdamiani@rocklandgreen.com

RE: Rockland Green Hillburn Complex
DEC Permit ID #: 3-3926-00118/00015
Town of Ramapo, Rockland County

IMPORTANT NOTICE TO PERMITTEE

The permit renewal you requested is enclosed. Please read it carefully and note the conditions that are included in it. The permit is valid for only that activity expressly authorized therein; work beyond the scope of the permit may be considered a violation of law and be subject to appropriate enforcement action. Granting of this permit does not relieve the permittee of the responsibility of obtaining any other permission, consent or approval from any other federal, state, or local government which may be required.

DEC sent a draft permit on 10/15/2024 with a cover letter identifying the consolidation of three solid waste facilities under one permit. DEC provides the following responses to the comments in your response, dated October 24, 2024, which addresses your concerns regarding the Phone Number, Authorized Activity, Distribution List, and Solid Waste Management Permit Conditions #s 12, 19, 27, 28, 29, 30, 38, 47, and 49:

- Phone Number: DEC has changed the extension number as Rockland Green requested.
- Authorized Activity: Rockland Green questioned the change to the Facility ID and the meaning of PP within the ID. All Solid Waste Management facilities are being updated to an activity ID with 4 digits rather than 2 when the permits are renewed. The "PP" is a code for any permitted composting or other organics recycling facility.

Rockland Green also questioned why the Hillburn Material Recovery Facility (MRF) is maintaining the old registration number when the Department required submission of a new application. The old registration code is being replaced with a new activity number, which is 44R30002¹. The number change is to reflect the DEC Division of Materials Management's new facility naming convention. This number is a program number used by the Department to identify the different activities, which allows DEC to send out annual reports for each activity. It does not impact Rockland Green.

- Distribution List: DEC has removed the operator's information as Rockland Green requested.

¹ This new activity code was incorrect in the Draft Permit.

RE: Rockland Green Hillburn Complex
DEC Permit ID #: 3-3926-00118/00015
Town of Ramapo, Rockland County
IMPORTANT NOTICE TO PERMITTEE

- Permit Condition No.12 – Noise Survey: Rockland Green requested that the yearly noise survey be waived because there have been no noise complaints and the facilities are not adjacent to residential properties. Please note that this language is standard in all DEC Solid Waste Management permits. Rockland Green can request a yearly waiver in writing if they choose to do so.
- Permit Condition No.19 – Notifications: DEC has added the RMME's phone number as Rockland Green requested.
- Permit Condition No.27 – Acceptable Waste: Rockland Green requested that the definition of SSR be consistent with the definition found in Title 6 360.2 (266) Source-separated recyclables, which has no restrictions or limitations. DEC has removed the last sentence of the paragraph, which limited the definition of SSRs.
- Permit Condition No.28 – Tonnage Limits: Rockland Green requested DEC incorporate language into the permit that will allow the permittee to provide notification to the Department ahead of time if Rockland Green anticipates a short-term tonnage increase. Rockland Green stated their belief that this notification was authorized by DEC in our July 29, 2022, letter. The July 29, 2022, Request for Additional Information letter included comments on the initial request letter from September 5, 2019. While these comments indicated that DEC was willing to include the requested notification language in the permit, the letter in and of itself is not an authorization. I apologize for the confusion. Upon further consideration, the Department has determined that this language is not acceptable, and it was not included in the draft permit.
- Permit Condition No.29 – Unacceptable Waste: Rockland Green requested similar language as found within Permit ID 3-3920-00152/00004 related to Solid Waste Management Permit Condition No.5² Unacceptable Waste. DEC cannot allow industrial waste to be accepted at Hillburn without a permit modification.
- Permit Condition No.30 – Operating Hours: DEC added the hours of operation for the two-week period during Passover, as was issued in the March 24, 2020, Permit Modification, as Rockland Green requested.
- Co-Composting Facility Specific Conditions/Permit Condition No.38 – Tonnage Limits: Rockland Green questioned how a modification request would impact the permittee once this permit takes effect and would like to be advised if the modification for a 25% increase would trigger climate review and public comment. DEC cannot say at this time what the requirements of a future modification will be. As you may be aware, there have been many changes to the law in the last few years. Unless the modification is capable of being categorized as minor, a public comment period will be required, and it could be subject to CLCPA. Unless the area was remapped as a Disadvantaged Community (DAC), it would not be subject to CLCPA Section 7(3).

² Incorrectly identified in the Rockland Green comments as condition 6.

RE: Rockland Green Hillburn Complex
DEC Permit ID #: 3-3926-00118/00015
Town of Ramapo, Rockland County

IMPORTANT NOTICE TO PERMITTEE

- Permit Condition No.47 – Tonnage Limits: Rockland Green commented that Register Facilities no longer have a corresponding Tonnage Limit assigned, and that the facility has been operating for well over one year and can demonstrate residue is below 15% as listed under Part 361. Although the regulations do not set a maximum tonnage, this does not preclude DEC from setting one for individual facilities. The facility can only accept the amount of waste it can process. Therefore, DEC has added the daily tonnage limit of 704 tons per day, which Rockland Green has stated is the tonnage limit specific to the Material Recovery Facility.
- Permit Condition No.49 – Operating Hours: DEC has changed the processing hours for the Material Recovery Facility to “as necessary,” as Rockland Green requested, to be consistent with the processing hours listed for the other two facilities listed in this permit.

Please note that draft Permit Condition No. 37. “Acceptable Waste” omitted a list of facilities from which Rockland Green can accept Biosolids. The permit has revised the condition to cite Attachment A, which includes this list. Attachment A has been added to the end of the permit. The language of the condition has been altered to allow for this Attachment to be updated by written approval of the Department without necessarily requiring modification of the permit.

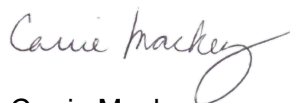
Please note the expiration date of the permit. As of December 26, 2023, all operational permits are conditioned such that renewal applications are due 180 days or more prior to the expiration date.

- Applications for renewal of all operational permits except for SPDES must be submitted to the Regional Permit Administrator. Applications for renewal submitted to the Regional Permit Administrator must be sent via electronic copy to dep.r3@dec.ny.gov, with one hard copy mailed to the above address.

The DEC permit number & program ID number (if applicable) noted on page 1 of the permit are important and should be retained for your records. These numbers should be referenced on all correspondence related to the permit, and on any future applications for permits associated with this facility/project area.

Be advised, the Uniform Procedures Regulations (6 NYCRR Part 621) provide that an applicant may request an adjudicatory proceeding if a permit is denied or contains conditions which are unacceptable to them. Any such request must be made in writing within 30 calendar days of the date of permit issuance and must be addressed to the Regional Permit Administrator at the letterhead address. A copy of the request must also be sent to the Chief Administrative Law Judge, addressed to Chief Administrative Law Judge, NYSDEC, Office of Hearings and Mediation Services, 625 Broadway, Albany, NY 12233-1550.

If you have any technical questions regarding the permit, please contact the applicable DEC program staff included on this permit's distribution. For general questions, you may contact me.



Carrie Mackey
Division of Environmental Permits, Region 3
carrie.mackey@dec.ny.gov



PERMIT
Under the Environmental Conservation Law (ECL)

Permittee and Facility Information

Permit Issued To:
ROCKLAND GREEN
172 MAIN STREET
NANUET, NY 10954

Facility:
ROCKLAND GREEN HILLBURN COMPLEX
50 BALER BOULEVARD
& 420 TORNE VALLEY ROAD
HILLBURN, NY 10931

Main Contact: Gerard M. Damiani, Jr., Executive Director of Rockland Green
Phone Number: (845) 753-2200 ext. 610

Facility Location: in RAMAPO in ROCKLAND COUNTY

Facility Principal Reference Point: NYTME: 571.051
Lat: 41°08'47.1"

NYTMN: 4,555.357
Long: 74°09'11.9"

Authorized Activity: This permit authorizes the operation of the following three (3) Solid Waste Management Facilities:

1. Ramapo (Hillburn) Transfer Station: Operation of a transfer station to accept municipal, commercial, and institutional solid waste (MSW), construction and demolition (C&D) debris, and source-separated recyclables.
2. Co-composting Facility: Operation of a sewage sludge composting facility to accept dewatered biosolids, dewatered plant sludge, animal manure, food waste, uncontaminated shredded wood waste, low grade paper, and yard waste.
3. Hillburn Material Recovery Facility (MRF): Operation of a recyclables handling and recovery facility to accept source-separated recyclables (SSR).

NEW PERMIT: This new consolidated permit includes the renewal of the authorization for the Ramapo (Hillburn) Transfer Station (formerly 3-3926-00118/00009), the Department initiated modification of the Co-composting Facility permit (formerly 3-3926-00274/00001), and the Hillburn Material Recovery Facility (MRF) registration to combine these three solid waste facilities under one permit.

Activity Numbers:

Transfer Station Activity Number: 44TP0002
Co-Composting Facility Activity Number: 44PP0002
MRF Activity Number: 44R30002



Permit Authorizations

Solid Waste Management – Under Article 27, Title 7

Permit ID 3-3926-00118/00015

NEW: Effective Date: 06/02/2025

Expiration Date: 06/01/2030

NYSDEC Approval

By acceptance of this permit, the permittee agrees that the permit is contingent upon strict compliance with the ECL, all applicable regulations, and all conditions included as part of this permit.

Permit Administrator: Rebecca S Crist, Deputy Regional Permit Administrator

Address: NYSDEC Region 3 Headquarters
21 S Putt Corners Road
New Paltz, NY 12561

Authorized Signature: Rebecca S. Crist Date 06 / 02 / 2025

Distribution List

G. Damiani Jr., Rockland Green
D. Upright, DEC Div. of Materials Management
Rockland County Health Department
M. Specht, Town of Ramapo Supervisor

Permit Components

SOLID WASTE MANAGEMENT PERMIT CONDITIONS

- Permit Conditions Applicable to all Facilities
- Ramapo (Hillburn) Transfer Station Specific Conditions
- Co-Composting Facility Specific Conditions
- Material Recovery Facility (MRF) Specific Conditions

GENERAL CONDITIONS, APPLY TO ALL AUTHORIZED PERMITS

NOTIFICATION OF OTHER PERMITTEE OBLIGATIONS



Solid Waste Management Permit Conditions

PERMIT CONDITIONS FOR ALL THREE FACILITIES

1. Part 360 Series: The facility must operate in conformance and compliance with 6 NYCRR Part 360 Solid Waste Management Facilities Regulations (Part 360 series) or any revisions hereafter promulgated and any State law, rule, code, or regulation; and the conditions of this permit.

Failure of the Permittee to meet any of the terms and conditions of this permit is a violation of Part 360 series and may subject the Permittee to enforcement action.

2. Compliance: Initial issuance or renewal of this permit shall not be construed as a determination by the Department that the facility is in compliance with applicable regulations or with the permit conditions. That determination will be made by the Department by means of periodic facility inspections and compliance audits.

3. Emergency Reporting: The Permittee shall notify the Regional Materials Management Engineer (RMME) by email (douglas.upright@dec.ny.gov) immediately of any emergency situations, including fires, receipt of medical waste or hazardous waste, spills, or a cessation of operation at the facility. The notification shall describe the nature of the emergency, emergency actions taken or proposed, and the schedule for implementation of the emergency repairs and actions. Emergency incidents shall be further documented in the facility's annual report.

4. Comprehensive Recycling Analysis: The Permittee shall only accept solid waste generated by sources located within municipalities or planning units which are included in a comprehensive recycling analysis (CRA) which has been approved by the Department pursuant to 6 NYCRR Part 360.11 and which have implemented the recyclables recovery program determined to be feasible by the analysis.

5. Ultimate Disposal of Waste: All solid waste passing through the facility must be ultimately treated or disposed of at a facility authorized by the Department if located in New York State, or by the appropriate governmental agency or agencies if in other states, territories, or nations.

6. Control Program: Pursuant to 6 NYCRR Part 360.19(c), a control program, which must include an employee training program, must be instituted to recognize and properly handle unauthorized waste brought to the facilities. An employee who has been trained in accordance with the Department approved training program must be present as loads of incoming solid waste are received so they can inspect each load for unauthorized waste.

Unauthorized waste received at the facility shall be removed from the facility within twenty-four (24) hours of receipt, unless otherwise authorized by the RMME. The Department must be notified of each incident as specified elsewhere in this permit, and in the annual report. Records of each incident shall be maintained pursuant to 6 NYCRR Part 360.19(c)(4)(i) and made available for Department review at the facility. At a minimum, the record of the incident shall contain the date the waste was received, the type of waste received, the date of disposal, the disposal method, and the location of disposal. Any unauthorized waste accepted at the facility must be managed in accordance with applicable Federal or State laws and regulations.



7. Access: Access to the facility shall be controlled by fencing, gates, and signs. A sign posted at all access points shall state the hours of operation and the types of waste accepted and not accepted at the facility complex.

8. Vehicles: All loaded incoming and outgoing vehicles must be appropriately covered, enclosed, or otherwise secured, to prevent dust and blowing litter. The Permittee shall deny entry to any vehicle that does not comply with this condition. Outbound loaded vehicles may be stored outside during and after operating hours provided leachate is collected from the vehicles and the vehicles remained covered. All loaded vehicles must be removed no later than the close of the next business day. Fully loaded trailers may be picked up at the facility for shipment off-site before and after the operational hours listed above, provided no other solid waste handling activity takes place and that the trailers are weighed prior to the close of processing hours so that the tonnage can be counted according to the facility's record keeping requirements.

9. Tracking: The Permittee shall regularly inspect the condition of off-site roads which provide immediate access to and from the facility, to determine if dirt, mud or litter from the facility or from vehicles using the facility is being deposited thereon. The Permittee shall take such steps as may be necessary (including, but not limited to, paving of on-site access roads) to prevent such conditions or to correct them promptly if they develop. The actual site shall also be regularly inspected and cleaned of all debris and dirt.

10. Nuisance Conditions: The operation of the facility must be conducted in such a manner that dust, litter, vectors, noise, and odors do not cause a nuisance condition or pose a threat to health and safety. Any operational changes deemed necessary by the Department to correct nuisance conditions must be implemented, including immediate cessation of all or part of the facility's operation.

11. Odors: Odors must be adequately controlled to prevent nuisance conditions on surrounding properties. If the Department determines, based on staff investigations, that odors constitute a nuisance or hazard to health or property in the surrounding area, the Permittee shall investigate and address the source of the odors and make any operational changes deemed necessary by the Department to abate odors. If odor problems persist at this facility, the Department may require operational modifications such as installing odor control systems and/or cessation of waste handling or acceptance. Documentation of complaints received and actions taken to alleviate the concern must be maintained and available for review by the Department and as required in the annual report.

12. Noise Survey: At least once a year, the Permittee shall conduct a noise survey to determine compliance with Part 360.19(j). The survey shall be carried out by an individual with expertise in noise analysis. The report must be submitted to the Department within thirty (30) days of when the data has been obtained. In addition to what is required in Part 360 and the Department's noise guidance document, this report shall also contain the raw data, including any interference that may have been observed during the data collection process (for example, cars passing by) and the operational conditions of the facility (equipment, trucks, etc.).

If it is demonstrated that site conditions make noise impacts on the surrounding communities unlikely, the Permittee may petition the Department to waive annual monitoring. If a waiver is granted, the noise survey must be conducted upon renewal of the permit. The Department reserves the option to reinstitute the noise survey requirement, if, at its sole discretion, the Department determines that conditions at the site have changed and the waiver is no longer justified.



13. Permits and Plans: A copy of this permit, along with all of the documents mentioned in the Solid Waste Management Permit Conditions and documents required by 6 NYCRR Part 360 series, must be available for inspection by NYSDEC, or the Rockland County Health Department, during operational hours at the project site.

The Permittee shall make all facility employees familiar with the approved Operations & Maintenance Manual and Contingency Plan and have them available for ready reference on the site. The facility shall have individuals on site that are sufficiently trained in the implementation of the Contingency Plan and are sufficiently trained in incident response. The Permittee shall be responsible for making these documents available for non-English speaking employees whose primary language is other than English. These documents must be available to employees no later than sixty (60) days after the effective date of this permit and/or the start of a new employee with special language requirements.

14. Logs and Inspections: A daily log for receipt and transport of all waste shall be maintained in accordance with 6 NYCRR Part 360.19(k)(2) and be available for Department review. The daily log must contain, at a minimum, the date; name and signature of the individual recording the information; the quantity, description, and origin of waste received at the facility; the quantity and destination of recyclables sent from the facility by major category; and the quantity and destination of C&D debris and MSW and other approved wastes sent from the facility for disposal.

Any complaint received by the Permittee about the operation of this facility must be documented in a complaint logbook, with a description of action taken to alleviate the concern and the results of the action. Documentation must be available for review at the Department's request. The log must contain the date and time of the complaint, nature of the complaint, name of the person (whether Department staff, resident, employees, etc.) reporting the complaint, weather conditions at the time of the complaint, the action taken to alleviate the condition, and the effectiveness of the actions taken.

All incoming waste received at the facility must be inspected prior to acceptance and inspected again after tipping for unauthorized wastes. Inspections of random and/or suspicious loads must be recorded on a daily basis and must contain the date of the inspection, the signature of the individual recording the information, a description of the wastes, the type of unauthorized waste found (if applicable), and the final disposition of the unauthorized waste. Such records must be maintained at the site and be available for Department review.

All inspection logs, daily log of received waste, and monitoring records shall be maintained on-site by the permittee for a period of seven (7) years from the date of recording.

15. Updates: All reports, plans and manuals, unless otherwise specified in the permit application or the Solid Waste Management Permit Conditions, must be updated no less frequently than renewal of the permit to operate. The Permittee must submit revised plans and reports at any time that such revisions are necessary to comply with revised 6 NYCRR Part 360 Series regulations and/or whenever the Permittee is notified by the Department that revisions are necessary to comply with applicable 6 NYCRR Part 360 Series regulations, regardless of whether or not such plans or reports have been previously approved. All updated plans, manuals, and reports must be prepared, stamped, and signed by a Professional Engineer licensed to practice engineering in the State of New York.



16. Submissions: Unless otherwise specified, all submissions required by this permit shall be sent to the Region 3 Regional Materials Management Engineer by mail or email at:

Regional Materials Management Engineer
Division of Materials Management – Region 3
New York State Department of Environmental Conservation
21 South Putt Corners Road
New Paltz, New York, 12561-1620
douglas.upright@dec.ny.gov
dec.sm.r3.solidwaste@dec.ny.gov

17. Annual Report: An annual report shall be submitted no later than March 1 of each calendar year for each facility listed under this permit while this permit is in effect. The annual report must be prepared in accordance with Part 360.19(k)(3). The annual report must include a revised closure/post-closure cost estimate in accordance with Part 360.22(b). If closure costs have changed, an updated financial assurance mechanism and an updated standby trust agreement (if applicable) must be provided to the Department.

Email is the preferred method of receiving annual reports. Please reference the following activity numbers when completing annual reporting:

Transfer Station Activity Number: 44TP0002
Co-Composting Facility Activity Number: 44PP0002
Material Recovery Facility (MRF) Activity Number: 44R20002

Annual reports shall be sent to BOTH of the following:

NYSDEC
Division of Materials Management
21 South Putt Corners Road
New Paltz, New York, 12561-1620
Attn: Regional Materials Management Engineer
SWMFannualreportR3@dec.ny.gov

NYSDEC
Bureau of Permitting and Planning
Division of Materials Management
625 Broadway, 9th Floor
Albany, NY 12233-7253
swmfannualreport@dec.ny.gov

18. Approvals: All approvals required by this permit shall be obtained in writing from either the RMME or the Regional Permit Administrator (RPA), or their designees.

The Permittee shall obtain prior approval from the Department for any new construction or work which will result in a modification of the facility or any component of the facility.

Prior approval is not required for the repair or replacement of a facility component provided that such repair or replacement does not result in a modification of the facility or any component of the facility and provided that the Department is notified in writing five (5) days prior to the commencement of the repair or replacement work.

Emergency or other repairs to facility components which result in a modification are undertaken at the risk of the Permittee unless prior approval is granted by the Department. The Permittee shall restore the facility to its previously approved configuration, if directed to do so by the Department.



19. Notifications: The Permittee shall notify the RMME by e-mail (douglas.upright@dec.ny.gov) or by phone (845-255-3760) immediately of any emergency situations, including, but not limited to, fires, receipt of unauthorized waste, spills, a cessation of operation at the facility, liquid detected in any secondary containment system, or if any structure or component becomes damaged or malfunctions in any way. The notification shall describe the nature of the emergency, emergency actions taken or proposed, and the schedule for implementation of the emergency actions. These emergency incidents must be further documented in the facility's Annual Report.

Prior to performing any non-routine construction, monitoring, or maintenance activity (except for emergency repairs), the RMME shall be notified in writing at least five (5) business days in advance of such activity.

20. New Construction: At least ninety (90) days prior to commencement of any new construction, including subsequent phases, the Permittee shall submit to the Department for its review and approval, engineering plans prepared by an individual who is licensed to practice engineering in the state of New York. Except for emergency repairs, no construction shall commence until written approval is received from the Department. All construction activities at this site must be supervised by an individual licensed to practice engineering in the State of New York.

All construction shall be in strict conformance with engineering plans and specifications prepared by PE licensed to practice in New York State (which have been approved by the Department), the conditions of this permit, and 6 NYCRR Part 360 Regulations.

21. Construction Certification: A construction certification report signed, stamped, and certified by a professional engineer (PE) licensed to practice in the State of New York must be submitted to the Department within forty-five (45) days after completion of any construction. The construction certification report must verify that the construction was completed in accordance with the PE certified plans and/or reports and in compliance with all applicable 6 NYCRR Part 360 regulations. As-built drawings of the new construction and the entire facility, as well as photographs, shall be submitted to the Department as part of the Report. Operation of the portion of the facility subject to the certification report cannot begin until the Department has reviewed an acceptable construction certification report as described above and has provided written approval to the permittee.

22. Environmental Monitor: Pursuant to 6 NYCRR Part 360.20, the Permittee shall continue to fund an on-site environmental monitor (OSEM). Department employees shall act as OSEMs at the facility. The OSEM shall be present during all aspects of facility operation and construction at times designated by the Department. It is not the intention of this condition to prevent the permittee from conducting such activities as are otherwise authorized by this permit if the OSEM is unable to be present at any particular time.

The Permittee shall provide office space which shall at a minimum include a desk, chair, phone, internet condition, and any other appropriate office equipment required by the OSEM to undertake normal duties. The office space and equipment must be acceptable to the Department.



The account to fund an OSEM shall be as follows:

- a. Upon written notification, the Permittee shall fund environmental monitoring services to be performed by or on behalf of the Department. These monitoring services will include, but not be limited to, the scope of work in an annual environmental monitoring work plan which is incorporated by reference and enforceable under this Permit.
- b. The Permittee shall provide the Department on an annual basis the funds necessary to support the activities set forth in the annual environmental monitoring work plan. The sum to be provided will be based on the annual budgeted amount and is subject to annual revision. Subsequent annual payments shall be made for the duration of this Permit or until the environmental monitoring services are no longer necessary, whichever comes first.
- c. The Permittee shall be billed annually, prior to the start of each State Fiscal Year (SFY) (April 1). If this Permit becomes effective subsequent to April 1, the initial bill will be for an amount sufficient to meet the anticipated cost of the environmental monitoring services through the end of the current SFY.
- d. The Department may revise the required annual bill on an annual basis to include all of the Department's estimated costs associated with the environmental monitoring services. The annual revision may take into account such factors as inflation, salary increases, changes in the fringe benefits rate, changes in operating hours and procedures, changes in non-personal service costs (including travel, training, sampling and analytical, and equipment costs, etc.), an increase or decrease in the level of environmental monitoring services necessary, and an increase or decrease in the number of environmental monitors. Upon written request by the Permittee, the Department shall provide the Permittee with a written explanation of the basis for any revisions.
- e. Prior to making its annual payment, the Permittee will receive, and have an opportunity to review, an annual environmental monitoring work plan that the Department will undertake during the year.
- f. Payments are to be made in advance of the period in which they will be expended and shall be made in full within thirty (30) days of receiving a bill from the Department. The bill from the Department to the Permittee will provide information regarding to whom payments should be made payable and the address to which payments should be sent.
- g. Failure to make the required payments shall be a violation of this Permit. The Department reserves all rights to take appropriate action to enforce the above payment provisions.
- h. The environmental monitor shall, when present at any of the Permittee facilities, abide by all of the Permittee health and safety and operational requirements and policies, if such requirements and policies exist and provided they are not inconsistent with Department policies and labor management contracts, and further provided, however, that this shall not be construed as limiting the environmental monitor's powers as otherwise provided for by law and shall not result in the environmental monitor being afforded less protection than otherwise provided to the environmental monitor by State and Federal health and safety requirements.



- i. The environmental monitor shall receive from the Permittee all general and site-specific safety training which is normally given to new facility/site employees for all areas of the facility or site. This training will be a supplement to the health and safety training that the environmental monitor receives from the Department.
- j. Upon selection of the environmental monitor, the Permittee shall immediately furnish to the environmental monitor any facility/site health and safety and operational requirements and policies. Within five (5) days of any revision to the facility/site health and safety and operational requirements and policies, the Permittee shall furnish to the environmental monitor the health and safety and operational requirements and policies.
- k. The environmental monitor shall be permitted to use environmental monitoring and data collection devices (e.g., photo ionization detectors, cameras, video recording devices, computers, cell phones, etc.) deemed necessary by the Department to evaluate and document observed conditions. Copies of the data or images collected from areas where confidentiality is a concern shall be provided to the Permittee upon their request. The Permittee may request the data and images be considered confidential information if appropriate.
- l. It will remain the responsibility of the Permittee to contact the Spill Hotline or any Division within the Department regarding any required notification of any spill, release, exceedances, etc. Notification to the environmental monitor will not be considered sufficient to replace notification to the Department.

23. Financial Assurance: In accordance with 6 NYCRR Part 360.22, the Department may elect to require a form of financial assurance for closure and post-closure monitoring of the complex. Such financial document shall clearly state any expiration date assigned by the financial institution or Permittee. Neither the provision of the financial assurance, nor any act of the Department in drawing upon the financial funding, shall relieve the Permittee of their obligation to comply with this permit and the requirements to close the facility properly.

24. Transfer Process: Pursuant to 6 NYCRR Part 621, prior to a change in the owner(s) or the operator(s) of the facility, the Permittee is required to submit for approval, on Department-approved forms, information needed by the Department to determine the fitness of the individual or company who will assume operation or ownership of the facility.

The following requirements apply:

- a. If the Permittee intends to contract with an individual or company to become a new operator of the facility, the Permittee must notify the RMME in writing at least thirty (30) days prior to the proposed change in operator and the proposed operator must submit a completed Record of Compliance (ROC) form.
- b. For a corporate Permittee, whose stock is privately held, if there is any change in officers, principals, directors, or stockholders of the permitted company, the Permittee must notify the Department at least thirty (30) days prior to this change and submit a completed ROC form for each officer, principal, etc. that is proposed to change.



- c. If an individual or another company acquires any or all of the stock of the permitted company, the stock buyer must notify the Department at least thirty (30) days prior to the proposed change in stock ownership and submit a completed ROC form. If the stock buyer is a non-publicly traded company, then any officer, principal, director, or stockholder of the company acquiring the stock, as well as the company itself, must submit a completed ROC form. If the new stockholder is a publicly traded company, any stockholder of it who owns (or increases their stock ownership to) at least 25% of the publicly traded stock must submit a “30-day prior notification” and a completed ROC form to the Department.

25. Cessation: The facility must routinely and regularly receive authorized solid waste during the permit period. All equipment necessary for the safe and compliant operation of the facility, and required by the approved Engineering Report, O&M Manual, Contingency Plan, and the terms of this permit, must be in place and functional at all times. If construction or operation activities allowed under this permit cease for a period of twelve (12) consecutive months, the permit automatically expires on the last day of the 12th month following cessation of activities. There is no automatic expiration when the cessation of construction or operation is caused by factors beyond the reasonable control of the Permittee, as determined by the Department, or when such cessation is in accordance with the provisions of the permit.

26. Closure: Unless this permit is renewed, the Permittee shall close the site prior to the expiration date of this permit or prior to the expiration of any renewals of this permit in accordance with the closure requirements in 6 NYCRR Part 360.21, and any approved closure plan.

Within forty-five (45) days of the completion of the closure activities, the Permittee shall submit to the RMME a certification, prepared and stamped by a Professional Engineer licensed to practice engineering in New York State, that the facility has been closed in accordance with 6 NYCRR Part 360 series regulations; and certifying that the need for further maintenance or corrective actions is minimized and that adverse environmental or health impacts such as, but not limited to, contravention of surface water and groundwater quality standards, gas migration, odors and vectors are prevented or remedied.

RAMAPO (HILLBURN) TRANSFER STATION SPECIFIC CONDITIONS

27. Acceptable Waste: The facility is authorized to accept municipal, commercial, and institutional solid waste (MSW), construction and demolition (C&D) debris, and source-separated recyclables (SSR) as defined by 6 NYCRR Part 360.2(b)(184), (62), and (266) respectively.

The facility is prohibited from accepting friable asbestos-containing waste as defined in Part 360.2(b)(125). However, C&D debris which contains minor amounts of non-friable asbestos and which is not categorized as asbestos waste may be accepted but may not be pulverized, shredded, ground, or handled in any manner that causes the material to become airborne or friable.

The facility is not authorized to accept tires in bulk but may accept tires which are incidental to incoming loads of MSW. The tires shall be separated from the MSW and stored separately in enclosed containers prior to shipment to a facility authorized to accept bulk tires. The Permittee may store up to 1,000 waste tires on site in closed containers.

28. Tonnage Limits: The Permittee is authorized to accept the waste types described in Solid Waste Management Permit Condition #27 at a maximum combined rate of 770 TONS per DAY and 3,850 TONS per WEEK at the Ramapo (Hillburn) Transfer Station.



29. Unacceptable Waste: The transfer facility is prohibited from accepting any waste not specifically authorized in Solid Waste Management Permit Condition #27, including, but not limited to, hazardous waste; liquid waste; yard waste; sewage and septage waste; chemical or explosive wastes; or industrial waste as defined in 6 NYCRR 360 and/or Part 371; infectious or medical wastes as defined in Public Health Law 1389-aa and Environmental Conservation Law Article 27 Section 1501; or asbestos waste.

30. Operating Hours:

The transfer facility may **RECIEVE** waste:

Monday – Friday	between 6:30 AM – 5:00 PM
Saturday	between 6:30 AM – 5:00 PM

The facility may **PROCESS** onsite waste:

Monday – Friday	as necessary
Saturday	as necessary

All receipt, delivery, or other operations are prohibited on all Sundays **except for the two-week period during Passover.**

The facility may receive waste for a two-week period during Passover upon a least five (5) days advance notification to the Department (RMME) with the following hours:

Monday – Friday	between 6:30 AM - 7:00 PM
Saturday – Sunday	between 6:30 AM – 7:00 PM

The Ramapo (Hillburn) Transfer Station shall not operate on the following New York State Holidays: New Year's Day; Memorial Day; Independence Day (4th of July); Labor Day; Thanksgiving Day; and Christmas Day, unless otherwise authorized by the Department due to a demonstrated public need.

31. Tipping Floor: All processing, tipping, and transfer activities shall occur inside of the approved transfer building. Unless otherwise authorized by the Department, all waste shall be removed from the tipping floor at the end of each operating day. Putrescible solid waste which cannot be shipped off-site at the end of the day may be stored in enclosed containers inside the building overnight until no later than the next business day. The tipping floor must be cleaned at the end of each operating day by washing or sweeping.

32. Tipping Floor Inspection: Annually, the facility tipping floor shall be emptied of all material and cleaned to allow inspection by a Professional Engineer (PE) to determine its condition. This inspection shall be done on a schedule approved by the Department and shall occur in the same month of each succeeding year. The facility may change the month of the floor inspection provided that the time elapsed between inspections does not exceed twelve (12) months. A report must be submitted to the Department, complete with photographs, within thirty (30) days of the floor inspection describing any results and any problems encountered. In the report, the Permittee shall describe what action, if any, is proposed to address any concerns found. The Permittee will take whatever measures are necessary to prevent the release of contaminants (including leachate) into the environment, including, but not limited



to, cessation of waste handling in the affected areas. The Department reserves the right to have the facility clean the tipping floor at any time for inspection if it is suspected the integrity of the floor might be questionable.

33. C&D and Recovered Recyclables: C&D and recyclables culled from C&D must be transported in accordance with 6 NYCRR Part 361-5.6. All C&D and recyclables culled from C&D must be tracked using the Department's tracking form or a form that has received written Department approval.

All C&D (processed and unprocessed) and recyclables culled from C&D must be managed and stored in accordance with 6 NYCRR Part 361-5.4(f). All C&D must be processed and stored in areas with appropriate leachate collection systems having monitorable secondary containment. Recyclables recovered from the C&D debris cannot be stored onsite for more than sixty (60) days unless prior written approval has been granted by the RMME. All recovered materials must be stored in a manner approved by the Department.

Pulverized C&D and/or screenings from C&D debris at the facility cannot be used for Alternative Daily Cover (ADC) at landfills unless written approval is first obtained from the RMME.

34. Leachate: All leachate collection components must be kept free draining and unobstructed. Piping and trench drains must be maintained, and oil-water separators should be inspected on a quarterly basis and cleaned out as necessary in order to maintain efficient operation. Leachate tanks at the facilities must meet the requirements of 6 NYCRR Part 360.19(n) and must be inspected no less than monthly. Records of leachate inspections must be maintained on site for seven (7) years and be available during Department inspections. Leachate must be collected from all waste hauling trucks on site.

35. Walls: The receiving facilities walls, ceilings, and support structures shall be cleaned a minimum of once a year.

36. Approved Documents: The facility shall be operated in conformance with the following approved plans and documents, to the extent that they do not conflict with 6 NYCRR Part 360 Solid Waste Management Facilities Regulations and this permit:

- a. Facility Manual for Rockland County Solid Waste Management Authority D/B/A Rockland Green, Hillburn Transfer Station and Recyclables Preprocessing Facility, dated July 11, 2022, prepared by Sterling Environmental Engineering, P.C., signed and stamped by Andrew M. Millspough, PE, Containing:
 1. Waste Control Plan
 2. Operations and Maintenance Plan
 3. Training Plan
 4. Emergency Response Plan
 5. Noise Monitoring and Control Plan
- b. Engineering Report, Rockland County Transfer Station and Recyclables Preprocessing Facility, dated January 2007, revised September 2011, prepared by William F. Cosulich Associates, P.C., signed and stamped by Daniel I. Shabat, PE.



- c. Rockland County Solid Waste Management Plan, dated December 2011, revised September 2014, prepared by RCSWMA, Cornerstone Environmental, and GBB.
- d. Part 360 Permit Renewal Application, dated August 1, 2022, signed by Gerard M. Damiani, Jr., Executive Director of Rockland Green.
- e. Record of Compliance, dated August 1, 2022, signed by Gerard M. Damiani, Jr., Executive Director of Rockland Green.
- f. Closure Cost Estimate, dated August 1, 2022, signed by Gerard M. Damiani, Jr., Executive Director of Rockland Green.

CO-COMPOSTING FACILITY SPECIFIC CONDITIONS

37. Acceptable Waste: The co-composting facility shall accept only the following waste types:

- a. **Biosolids:** Biosolids as defined in 6 NYCRR Part 360.2(b)(31) is to be sewage sludge dewatered to at least 13% total solids and each waste source must not exceed the pollutant concentrations found in Table 6 of 6 NYCRR Part 361-3.9. The Department must be notified of all new sources to include any sources which were considered but rejected due to contaminant exceedances. The Department may require additional parameters for testing.

If the permittee desires to make any changes to the facilities listed in Attachment A, the permittee shall submit a written request to the Regional Materials Management Engineer (RMME) to make such proposed changes. The proposed changes shall not be implemented unless authorized in writing by the RMME or their designee. Issuance of such approval without modification of the permit is at the Department's discretion.

The permittee may only accept biosolids from facilities listed in Attachment A.

- b. **Sludge:** Dewatered filtration plant sludge can be accepted from the Veolia Water New York, Inc Lake DeForest Water Treatment Plant.
- c. **Source-separated organics:** as defined by 6 NYCRR Part 360.2(b)(265) to include food scraps, food processing waste, soiled or unrecyclable paper, and yard trimmings. Food waste can be taken as long as it is screened for inorganic material unsuitable for composting. Low grade paper may be accepted as well.
- d. **Wood debris:** as defined by 6 NYCRR Part 360.2(b)(326) may be accepted at the composting facility but must be shredded prior to mixing and shall be uncontaminated and unadulterated as defined in 6 NYCRR Part 360.2(b).

38. Tonnage Limits: The Permittee is authorized to accept a maximum of **33,000 wet TONS per YEAR** of authorized waste at the co-composting facility. Within this yearly maximum, the facility may accept a daily average of **90 wet TONS per DAY** and a maximum of **195 wet TONS per DAY**.



39. Unacceptable Waste: The Permittee is prohibited from accepting any waste not authorized in Solid Waste Management Permit Condition #37, including hazardous, liquid, chemical, explosive, medical, and asbestos waste, C&D debris, MSW, or ash from the combustion of MSW, or any wastes that do not positively contribute to the composting process or the quality of the product, unless otherwise approved by the RMME.

40. Operating Hours:

The facility may **RECIEVE** waste:

Monday – Saturday between 7:00 AM – 7:00 PM

The facility may **PROCESS** onsite waste:

Monday – Sunday as necessary or continuous

All receipt, delivery, or other operations are prohibited on all Sundays.

41. Inbound Organics: The input of authorized waste streams must meet the pollutant limits established in Table 6 of 6 NYCRR Part 361-3.9. Biosolids and other organic material found unacceptable for composting shall be disposed of at an approved solid waste management facility.

42. Pathogen and Vector Attraction Reduction: The facility must meet pathogen reduction (PR) and vector attraction reduction (VAR) requirements. For PR, the temperature of the entire compost mix must be maintained at 55° Celsius (131° Fahrenheit) or higher for at least three (3) consecutive days. For VAR, the entire compost mix must be maintained above 40° C (104° F) for at least fourteen (14) consecutive days, with the average temperature during the period higher than 45° C (113° F). The three (3) days for PR can count towards the VAR detention time requirement, but the time for VAR cannot include any time before PR has begun. The combined number of days in the active composting cycle plus days in the curing cycle shall be a minimum of fifty (50) days.

43. Product Storage and Use: The compost product must be mature and must be used in a legitimate manner as a soil amendment. The Department can require testing of the compost for maturity before distribution on a case-by-case basis. Maturity testing may include but not be limited to potential for reheating, organic matter reduction, plant growth impact, or oxygen consumption. The degree of maturity required will depend on the use of the product.

The compost product must not exceed the pollution concentrations found in Table 6 of 6 NYCRR Part 361-3.9. The addition of sawdust, soil, or other materials to the process or the product for dilution purposes is not allowed. The product must not contain more than two percent total gross contaminants by weight (dry). A compost product that does not meet these requirements is considered a waste and must be disposed of at an approved solid waste management facility or reprocessed if feasible.

The finished compost particle size must not exceed 10 millimeters in length, except for wood particles derived from the use of wood chips as a bulking agent in composting. Finished compost can be stored at the facility for a maximum of twenty-four (24) months. Except for products derived solely from yard trimmings, an information label, sheet, or brochure must be affixed to the packaging and should state the name and address of the facility, the type of waste from which the product was derived, and recommended safe uses/restrictions on use.



44. Leachate: All leachate generated by storage, handling, or composting must be controlled, collected, and disposed in a manner approved by the Department.

45. Approved Documents: The facility shall be operated in conformance with the following approved or relevant plans and documents, to the extent they do not conflict with 6 NYCRR Part 360 Solid Waste Management Facilities Regulations and this permit:

- a. Rockland County Solid Waste Management Authority Co-Composting Facility Operations and Maintenance Manual, dated 2001, revised December 2016 by WeCare Organics, LLC, reviewed and accepted February 2017 by GHD Consulting Services, Inc.
- b. Part 360 Permit Renewal Application, dated January 19, 2016, signed by Anna Roppolo (former) Executive Director of RCSWMA.
- c. Rockland County Solid Waste Management Plan, dated December 2011, revised September 2014, prepared by RCSWMA, Cornerstone Environmental, and GBB.

MATERIAL RECOVERY FACILITY SPECIFIC CONDITIONS

46. Acceptable Waste: The facility may accept non-putrescible, source-separated recyclables.

47. Tonnage Limits: The facility may accept a maximum of **704 TONS per DAY** of SSR.

48. Unacceptable Waste: The Permittee is prohibited from accepting hazardous waste; liquid waste; chemical or explosive wastes; or industrial waste as defined in 6 NYCRR 360 and/or Part 371; infectious or medical wastes as defined in Public Health Law 1389-aa and Environmental Conservation Law Article 27 Section 1501; or asbestos waste, unless authorized in writing by the RMME.

49. Operating Hours:

The transfer facility may **RECIEVE** waste:

Monday – Saturday between 6:30 AM – 7:00 PM

The facility may **PROCESS** onsite waste:

Monday – Saturday as necessary

All receipt, delivery, or other operations are prohibited on all Sundays.

50. Approved Documents: The facility shall be operated in conformance with the following approved or relevant plans and documents, to the extent they do not conflict with 6 NYCRR Part 360 Solid Waste Management Facilities Regulations and this permit:

- a. Registration Form for a Solid Waste Management Facility, dated May 18, 2023, signed by Gerard M. Damiani Jr., Executive Director of Rockland Green.



- b. Site Plans and MRF Equipment Layout, received on May 11, 2023.
- c. Alternate Processing Facilities, received on May 11, 2023.
- d. Sorting Systems Operations Manual, received on May 11, 2023.
- e. Letter: Response to the Departments Request for Additional Information, dated May 18, 2023, signed by Gerard M. Damiani Jr., Executive Director of Rockland Green.
- f. Rockland County Solid Waste Management Plan, dated December 2011, revised September 2014, prepared by RCSWMA, Cornerstone Environmental, and GBB.

GENERAL CONDITIONS - Apply to ALL Authorized Permits

1. Facility Inspection by the Department: The permitted site or facility, including relevant records, is subject to inspection at reasonable hours and intervals by an authorized representative of the Department of Environmental Conservation (the Department) to determine whether the permittee is complying with this permit and the ECL. Such representative may order the work suspended pursuant to ECL 71- 0301 and SAPA 401(3).

The permittee shall provide a person to accompany the Department's representative during an inspection to the permit area when requested by the Department.

A copy of this permit, including all referenced maps, drawings and special conditions, must be available for inspection by the Department at all times at the project site or facility. Failure to produce a copy of the permit upon request by a Department representative is a violation of this permit.

2. Relationship of this Permit to Other Department Orders and Determinations: Unless expressly provided for by the Department, issuance of this permit does not modify, supersede or rescind any order or determination previously issued by the Department or any of the terms, conditions or requirements contained in such order or determination.

3. Applications For Permit Renewals, Modifications or Transfers: The permittee must submit a separate written application to the Department for permit renewal, modification or transfer of this permit. Such application must include any forms or supplemental information the Department requires. Any renewal, modification or transfer granted by the Department must be in writing. Submission of applications for permit renewal, modification or transfer are to be submitted to:

Regional Permit Administrator
NYSDEC Region 3 Headquarters
21 South Putt Corners Road
New Paltz, NY 12561-1620
DEP.R3@dec.ny.gov

4. Submission of Renewal Application: The permittee must submit a renewal application at least 180 days before permit expiration for the following permit authorizations: Solid Waste Management.



5. Permit Modifications, Suspensions and Revocations by the Department: The Department reserves the right to exercise all available authority to modify, suspend or revoke this permit. The grounds for modification, suspension or revocation include:

- a. materially false or inaccurate statements in the permit application or supporting papers;
- b. failure by the permittee to comply with any terms or conditions of the permit;
- c. exceeding the scope of the project as described in the permit application;
- d. newly discovered material information or a material change in environmental conditions, relevant technology or applicable law or regulations since the issuance of the existing permit;
- e. noncompliance with previously issued permit conditions, orders of the commissioner, any provisions of the Environmental Conservation Law or regulations of the Department related to the permitted activity.

6. Permit Transfer: Permits are transferrable unless specifically prohibited by statute, regulation or another permit condition. Applications for permit transfer should be submitted prior to actual transfer of ownership.

NOTIFICATION OF OTHER PERMITTEE OBLIGATIONS

Item A: Permittee Accepts Legal Responsibility and Agrees to Indemnification

The permittee, excepting state or federal agencies, expressly agrees to indemnify and hold harmless the Department of Environmental Conservation of the State of New York, its representatives, employees, and agents ("DEC") for all claims, suits, actions, and damages, to the extent attributable to the permittee's acts or omissions in connection with the permittee's undertaking of activities in connection with, or operation and maintenance of, the facility or facilities authorized by the permit whether in compliance or not in compliance with the terms and conditions of the permit. This indemnification does not extend to any claims, suits, actions, or damages to the extent attributable to DEC's own negligent or intentional acts or omissions, or to any claims, suits, or actions naming the DEC and arising under Article 78 of the New York Civil Practice Laws and Rules or any citizen suit or civil rights provision under federal or state laws.

Item B: Permittee's Contractors to Comply with Permit

The permittee is responsible for informing its independent contractors, employees, agents and assigns of their responsibility to comply with this permit, including all special conditions while acting as the permittee's agent with respect to the permitted activities, and such persons shall be subject to the same sanctions for violations of the Environmental Conservation Law as those prescribed for the permittee.

Item C: Permittee Responsible for Obtaining Other Required Permits

The permittee is responsible for obtaining any other permits, approvals, lands, easements and rights-of-way that may be required to carry out the activities that are authorized by this permit.

Item D: No Right to Trespass or Interfere with Riparian Rights

This permit does not convey to the permittee any right to trespass upon the lands or interfere with the riparian rights of others in order to perform the permitted work nor does it authorize the impairment of any rights, title, or interest in real or personal property held or vested in a person not a party to the permit.



Item E: SEQR Type II Action

Under the State Environmental Quality Review Act (SEQR), the Department of Environmental Conservation has determined that this permit is a Type II Action and not subject to further procedures under this law.

ATTACHMENT A – Permit ID 3-3926-00118/00015

Approved Biosolids Sources

Name	Address	NYSDEC Facility ID	SPDES ID
Bergen Point WWTP	600 Bergen Ave, West Babylon NY 11704	1-4720-00355	NY0104809
Hunts Point Wastewater Resource Recovery Facility	Coaster Street And Ryawa Ave, Bronx NY 10474	2-6007-00025	NY0026191
Owls Head Wastewater Resource Recovery Facility	6700 Shore Road, Brooklyn, NY 11220	2-6102-00005	NY0026166
26th Ward Wastewater Resource Recovery Facility	122-68 Flatlands Ave Brooklyn, NY 12207	2-6105-00009	NY0026212
Wards Island Wastewater Resource Recovery Facility	7 Wards Island Bridge New York, NY 11430	2-6203-00005	NY0026131
Bowery Bay Wastewater Resource Recovery Facility	43-01 Berrian Boulevard, Astoria, NY 11102	2-6301-00008	NY0026158
Jamaica Wastewater Resource Recovery Facility	150-20 134 th Street Jamaica, NY 11430	2-6308-00021	NY0026115
Oakwood Beach Wastewater Resource Recovery Facility	Emmet Ave And Mill Road, Staten Island NY 10474	2-6404-00065	NY0026174
Highland Falls WWTP	241 Mountain Ave, Highland Falls, NY 10928	3-3336-00007	NY0022586
Highlands Sewer Improvement Area	31-71 Mine Dock Road, Highland Falls, NY 10928	3-3336-00014	NY0149411
West Point Target Hill WWTP	RIVER RD, S Of Target Hill Athletic Field Highlands, NY 10996	3-3336-00201	NY0023761
Walkkill STP	600 St Rte 211 E, Middletown, NY 10940	3-3352-00056	NY0024422
Haverstraw Joint Regional STP	Ecology Lane, West Haverstraw, NY 10993	3-3922-00013	NY0028533
Orangetown Sd #2 STP	127 NY-303, Orangeburg, NY 10962	3-3924-00038	NY0026051

ATTACHMENT A -- Permit ID 3-3926-00118/00015 Approved Biosolids Sources

Name	Address	NYSDEC Facility ID	SPDES ID
Rockland County Sewer District No. 1	4 Route 340, Orangeburg, NY 10962	3-3924-00052	NY0031895
Suffern - V STP	Ed Fagan Drive, Suffern, NY 10901	3-3926-00100	NY0022748
Western Ramapo Advanced WWTP	137 State Hwy 17, Hillburn, NY 10931	3-3926-00537	NY0270598
Stony Point STP	23 North Street, Stony Point, NY 10980	3-3928-00026	NY0028851
NYCDEP - Grahamsville Wastewater Treatment Plant	7870 NY-42, Grahamsville, NY 12740	3-4842-00008	NY0026549
Kingston WWTF	91-129 East Strand Ave Kingston, NY 12401	3-5108-00044	NY0029351
Lloyd Highland Sewer Dist STP	15 River Road, Highland, NY	3-5132-00018	NY0024295
Marlboro STP	115 Dock Road, Marlborough, NY	3-5136-00012	NY0109720
New Paltz Ohioville Sewer Dist 6 STP	52 Clearwater Road, New Paltz, NY 12561	3-5138-00019	NY0109886
New Paltz (V) WWTF Facility	71 Huguenot Street New Paltz, NY 12561	3-5138-00049	NY0030082
Rosendale WWTF Facility	136 Creek Locks Road, Rosendale NY	3-5146-00011	NY0109061
Glasco Wastewater Treatment Plant	234 Hudson Street, Saugerties, NY	3-5148-00074	NY0145564
Pine Hill WWTP	8811 State Route 28, Shandaken, NY 12465	3-5150-00070	NY0026557
Shawangunk Wallkill Sewer District	Hoffman Road, Wallkill NY 12589	3-5152-00017	NY0021521
Ulster Sewer District Sewage Treatment Plant	1101 Dogwood Street, Kingston, NY 12401	3-5154-00033	NY0021563

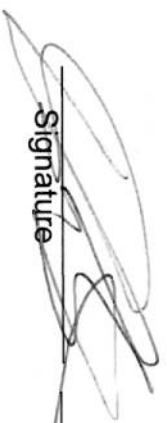
ATTACHMENT A – Permit ID 3-3926-00118/00015 Approved Biosolids Sources

Name	Address	NYSDEC Facility ID	SPDES ID
Ulster Whittier Sewer Dis STP	380 Ulster Landing Rd - N Of St Rte 199 Kingston, NY 12401	3-5154-00035	NY0021571
Kerhonkson WWTF - Kerhonkson Sd	1391 Berme Rd, Kerhonkson, NY 12446	3-5156-00083	NY0109924
Yorktown Heights STP	2200 Greenwood Street, Yorktown Heights NY 10598	3-5554-00027	NY0026743
Guilderland - T Nott Rd STP	6073 Nott Road, Guilderland NY 12084	4-0130-00013	NY0022225
Margaretville - V STP	41158 St Rte 28, Margaretville, NY 12455	4-1246-00008	NY0026531
Little Falls Wastewater Treatment Plant	223 River Road, Little Falls NY 13365	6-2109-00011	NY0022403

Out of State

- Fairfield WWTP (CT)
- Joint Meeting WWTP (Essex & Union Counties, NJ)
- Brockton Advanced Water Reclamation Facility (Brockton, MA)

The above sources have been approved by:
 Douglas Upright
 Region 3 Materials Management Engineer


 Signature _____ Date 3/29/25