







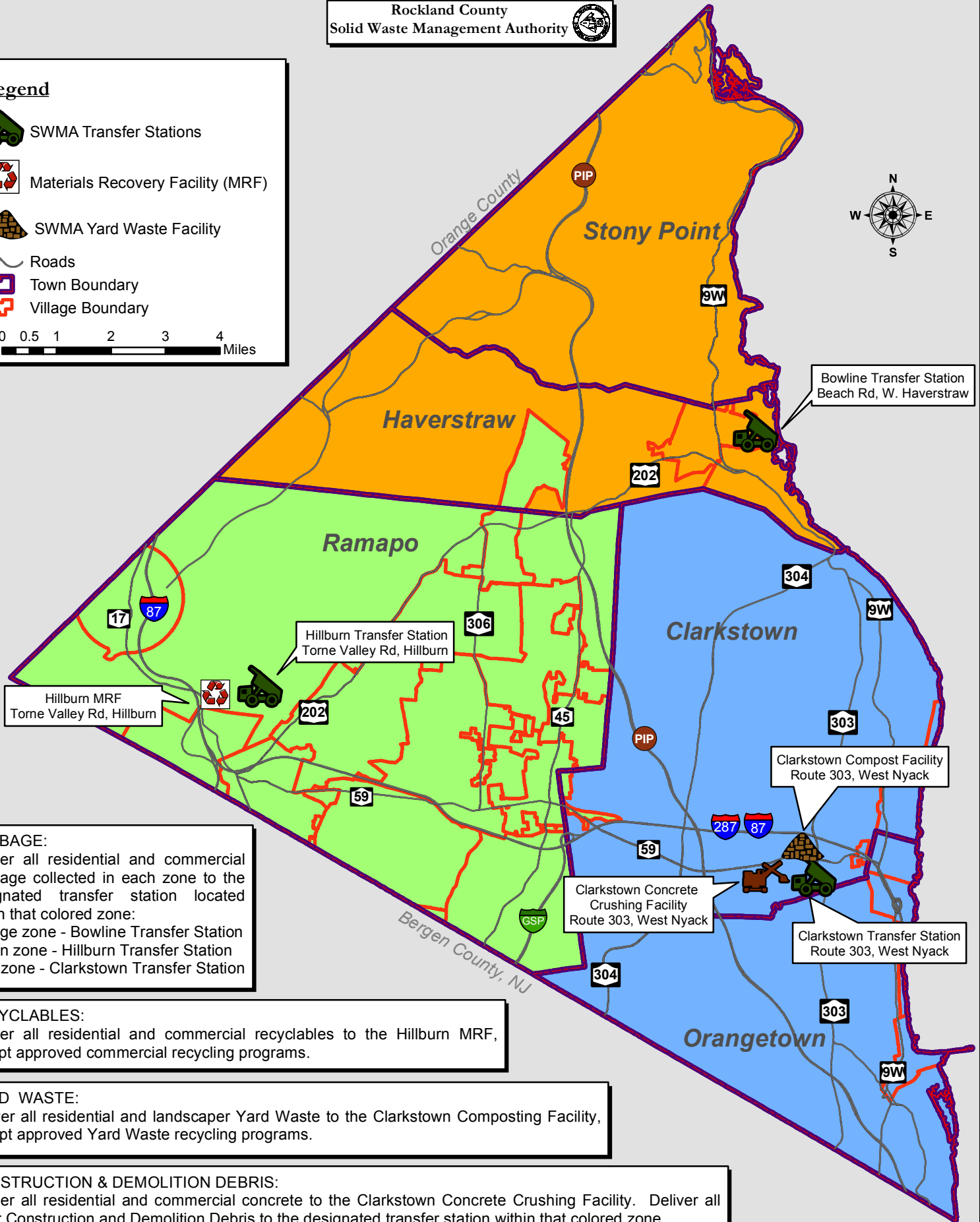
# ROCKLAND COUNTY FLOW CONTROL MAP

Prepared in Accordance with Chapter 350 of the Laws of Rockland County

Rockland County  
Solid Waste Management Authority

## Legend

-  SWMA Transfer Stations
  -  Materials Recovery Facility (MRF)
  -  SWMA Yard Waste Facility
  -  Roads
  -  Town Boundary
  -  Village Boundary
- 0 0.5 1 2 3 4 Miles



### GARBAGE:

Deliver all residential and commercial Garbage collected in each zone to the designated transfer station located within that colored zone:

- Orange zone - Bowline Transfer Station
- Green zone - Hillburn Transfer Station
- Blue zone - Clarkstown Transfer Station

### RECYCLABLES:

Deliver all residential and commercial recyclables to the Hillburn MRF, except approved commercial recycling programs.

### YARD WASTE:

Deliver all residential and landscaper Yard Waste to the Clarkstown Composting Facility, except approved Yard Waste recycling programs.

### CONSTRUCTION & DEMOLITION DEBRIS:

Deliver all residential and commercial concrete to the Clarkstown Concrete Crushing Facility. Deliver all other Construction and Demolition Debris to the designated transfer station within that colored zone.